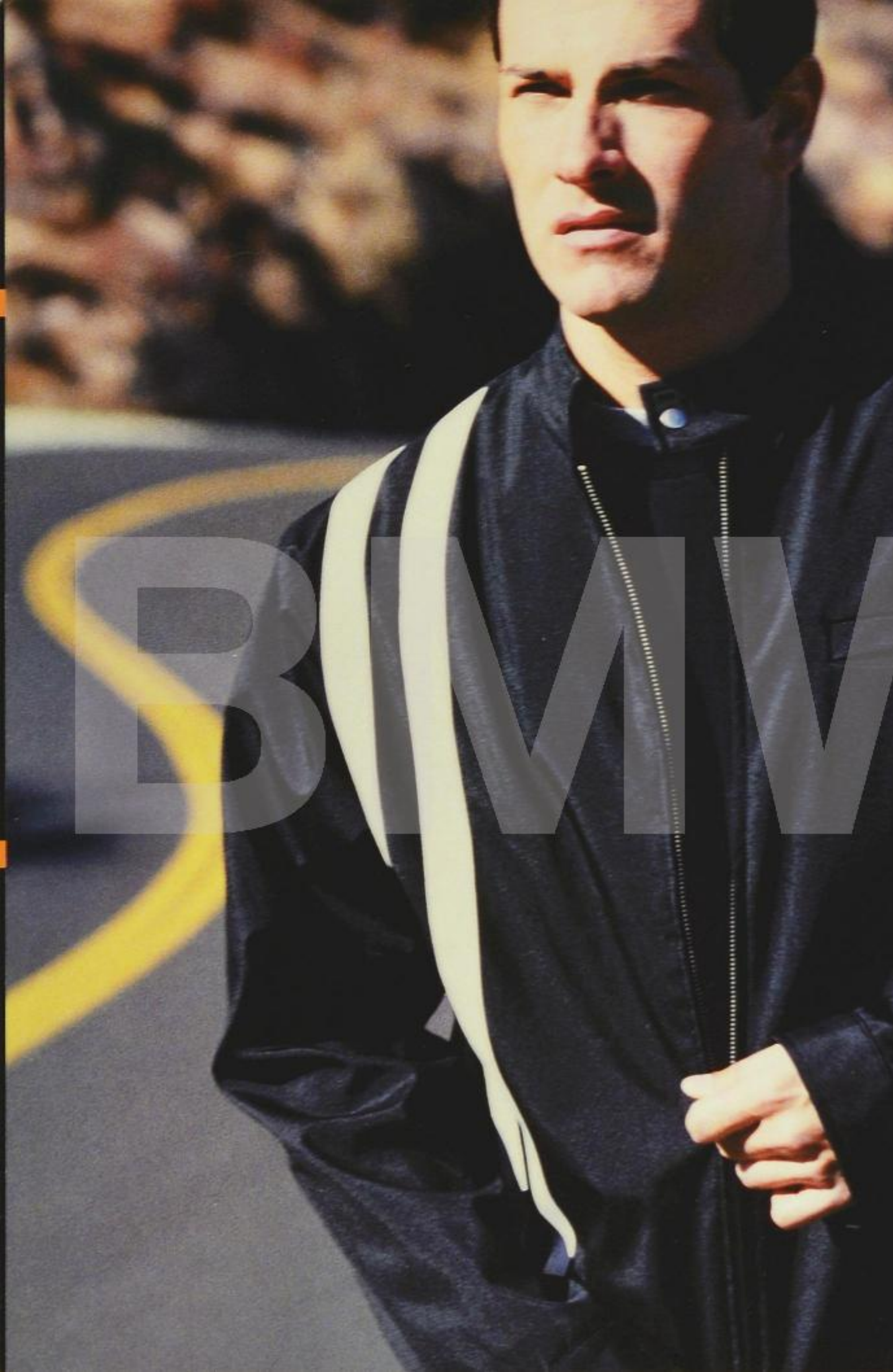


MINI MOTORINGGEAR
2002

CLOTHING, MEET MOTORING.
MOTORING, MEET CLOTHING.
HAVE FUN YOU TWO.





Biker Jacket, p.4

GET READY.

Sometimes motoring just sort of happens. A simple milk run turns into a three-day tour. A blind date becomes your true love. With that in mind, we've designed MINI MotoringGear to prepare you for the unknown, with style and function as unique as the car itself. Zip-off sleeves. Padded elbows. Hidden pockets. Reversible shirts. Maybe you can't plan for spontaneity. But you sure can dress for it.



CHAMOIS JACKET

100% brushed cotton body with removable synthetic chamois sleeves. Thermolite padding adds lightweight comfort while staying cool. Imported.

Unisex sizes XS-XL

99 00 0 002 891 to 895

\$175.00



BIKER JACKET

Lightweight nylon jacket with signature MINI details. Imported.

Men's sizes M-XXL

80 12 0 140 920 to 923

\$105.00





BIKER JACKET

Lightweight nylon jacket with signature MINI details. Imported.

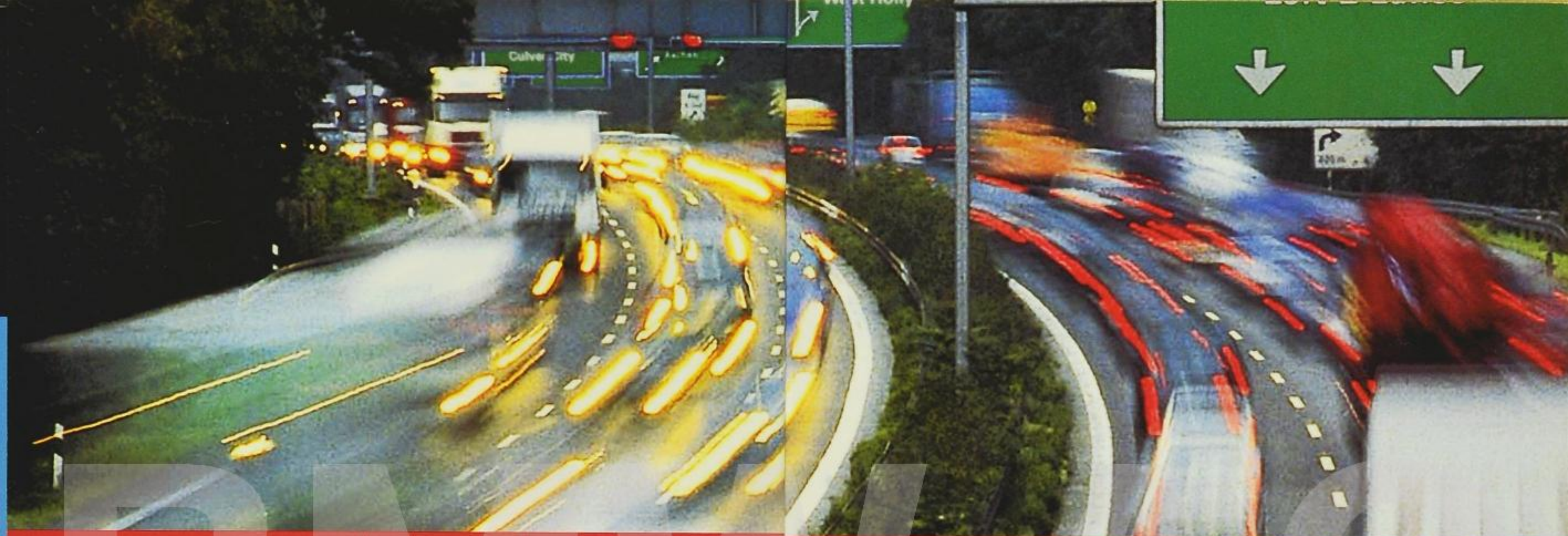
Men's sizes M-XXL

80 12 0 140 920 to 923

\$105.00

SHIFT GEARS.

At times, a little dirt on your MINI can be a badge of honor, a memento of your experiences. Other times, it's a pockmark on perfection. That's when the Chamois Jacket kicks into gear. These supple synthetic chamois sleeves look great on the jacket, but zip off at a moment's notice for detail duty, leaving a vest that's ready for the road.



GET IN.

MINI MotoringGear turns heads just cruising down the boulevard, but its real style lies in the details. Color blocks and piping echo the contrasting two-tone paint of a MINI's roof and body. And custom graphics serve up a look you'd just as soon frame as wear.

SIDEVIEW SWEATSHIRT

100% cotton raglan sweatshirt, with high v-neck and contrasting piping inspired by MINI's sideview mirrors. MINI world tour graphics on the back. Imported. Men's sizes S-XL

British Racing Green
99 00 0 002 811 to 814

Black
99 00 0 002 815 to 818

\$47.00





A

A. MOTORING JACKET

100% semi-brushed cotton with mesh lining and water resistant treatment. A back pocket and padded left elbow prepare you for whatever motoring brings. Imported.

Men's sizes S-XL

Black w/Red Stitching
99 00 0 002 877 to 880

Navy w/Green Stitching
99 00 0 002 881 to 884

\$125.00



B. BULLDOG SWEATSHIRT

100% lightweight cotton, short sleeve raglan sweatshirt. Tone-on-tone graphics express the bulldog determination of a MINI's front profile. Imported.

Women's sizes S-L

Black 99 00 0 002 819 to 821

Magenta 99 00 0 002 822 to 824



Men's sizes S-XL

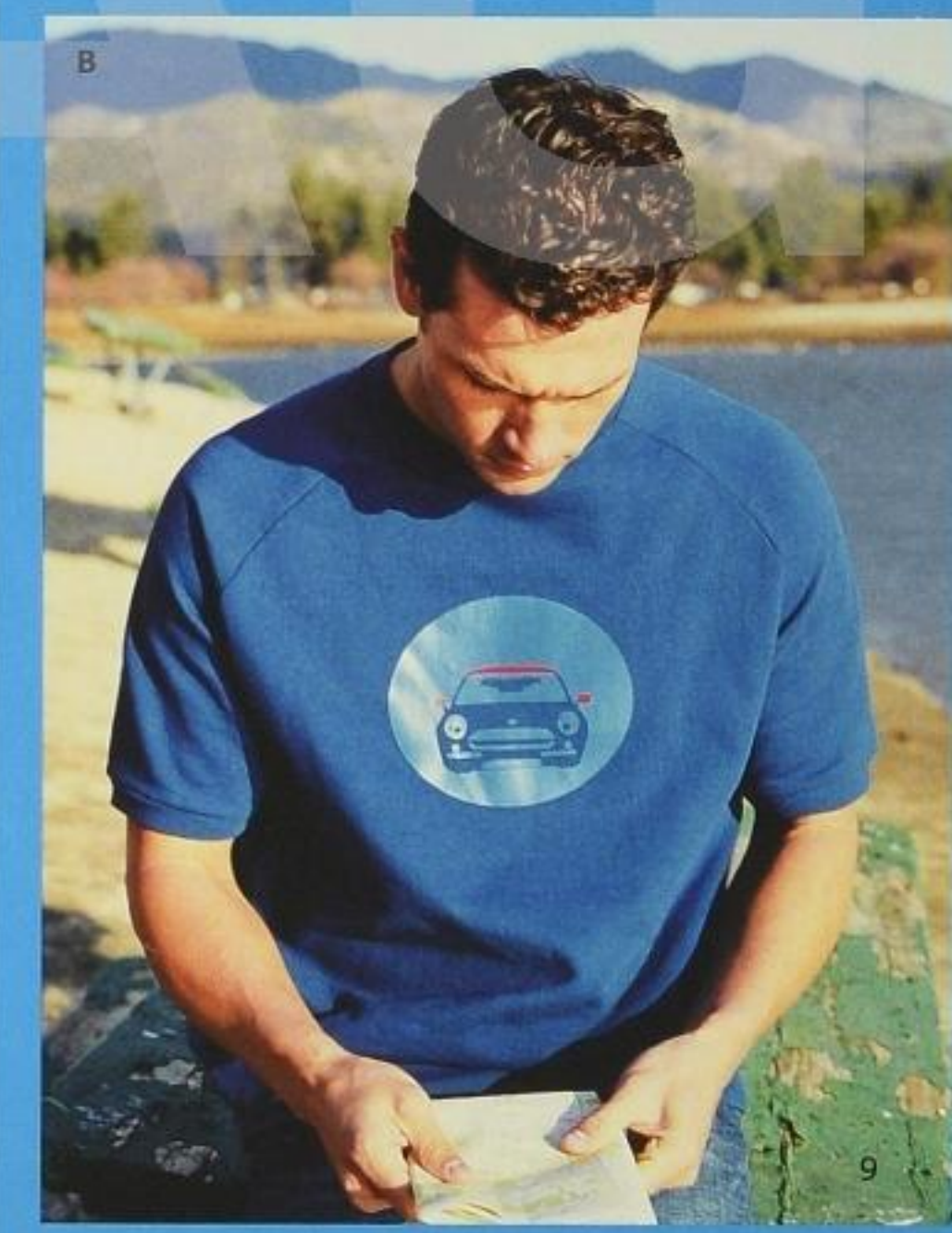
Black 99 00 0 002 799 to 802

Indi Blue 99 00 0 002 803 to 806

\$40.00



B



B

RALLY SHIRT

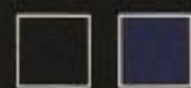
Long sleeve performance shirt, cotton blend. Profile leather patch on left elbow and reflectant MINI patch on back neck. Imported.

Unisex sizes XS-XL

Black 99 00 0 002 853 to 857

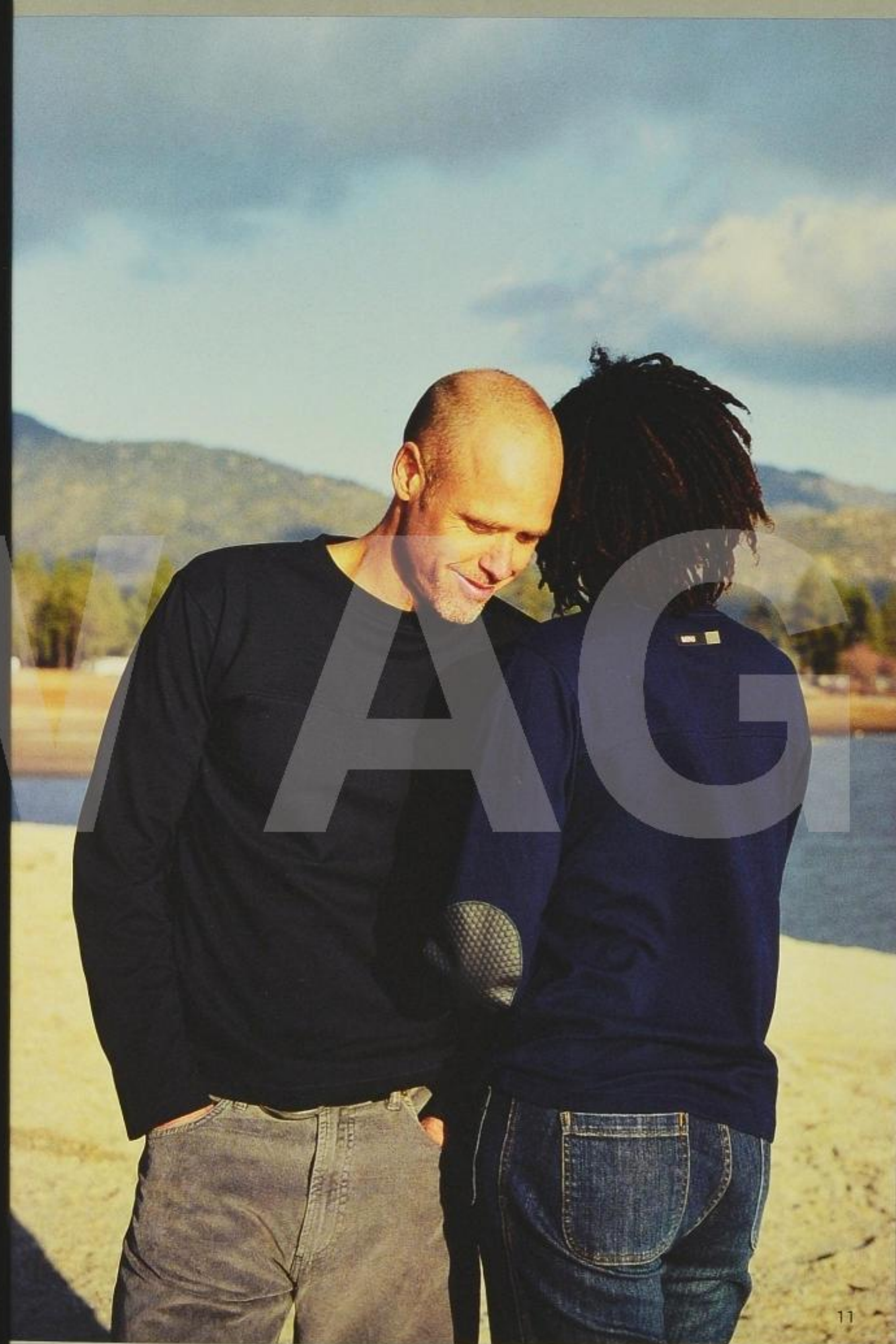
Navy 99 00 0 002 858 to 862

\$52.00



BUCKLE UP.

With every shared mile, the line between you and your MINI becomes blurred. Adrenaline and petrol flow in unison, as the seat molds more to your body with every curve. The Rally Shirt has this bond built into every stitch, with a Profile leather patch from optional MINI seats providing long-haul comfort at the elbow.



A. DAYTRIP SHIRT

This shirt combines design and performance, with oxford-like style enhanced for motoring by jersey-knit comfort. 100% cotton poplin front with 100% cotton jersey back and sleeves. Imported.

Women's sizes S-L 99 00 0 002 871 to 873

Men's sizes S-XL 99 00 0 002 863 to 866

\$45.00



B. TRACK T

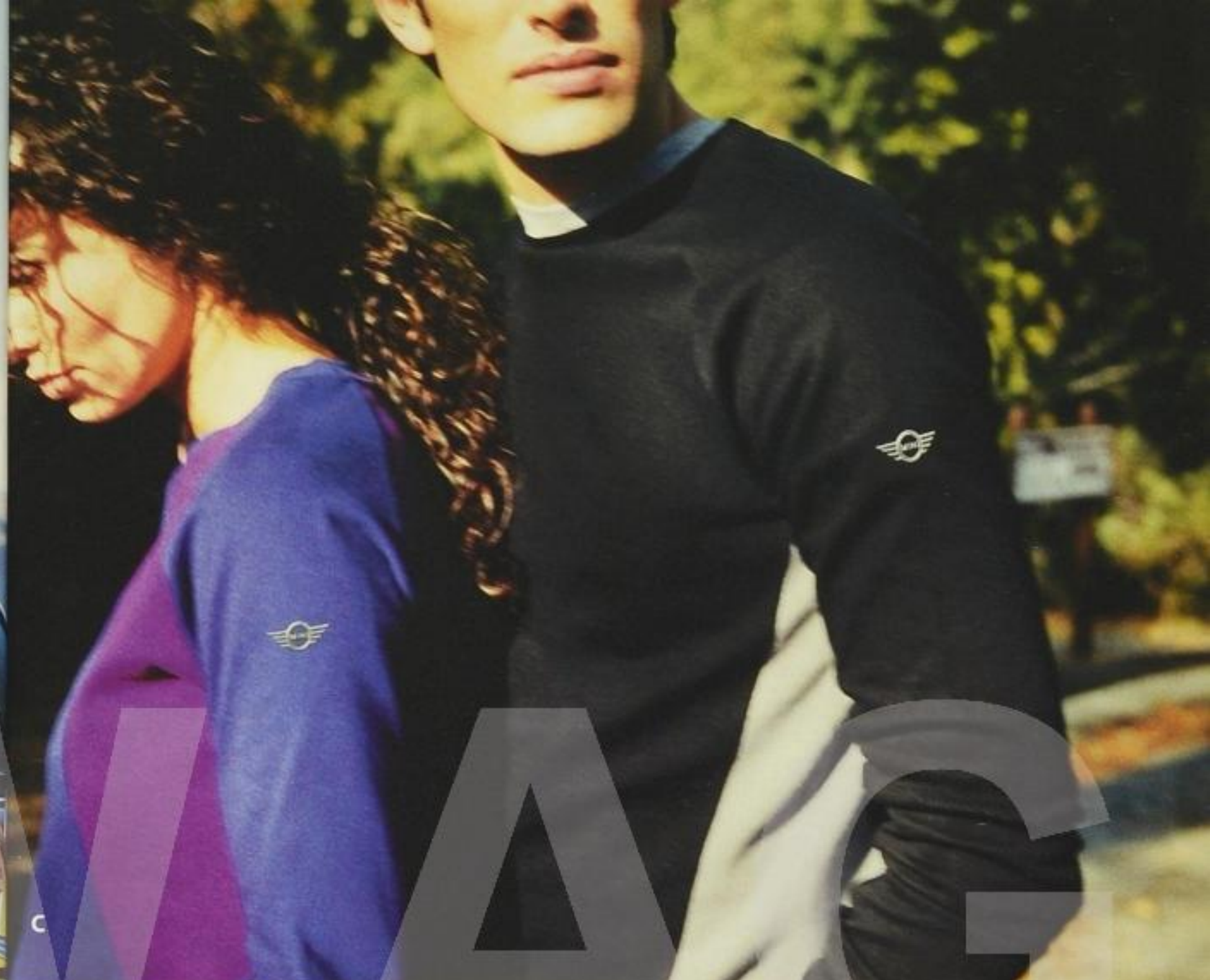
Cap sleeve, 100% cotton fitted jersey with graphics inspired by the go-kart handling of the MINI Cooper. Imported.

Women's sizes S-L

Bluette 99 00 0 002 775 to 777

Black 99 00 0 002 778 to 780

\$19.00



B



C. GLOVEBOX SHIRT

100% heavy cotton jersey. This shirt has a zippered pocket inside the left sleeve so the things you need are close at hand. So you can keep your hand on the wheel. Imported.

Women's sizes S-L

Bluette/Magenta 99 00 0 002 829 to 831

Black/Grey 99 00 0 002 832 to 834

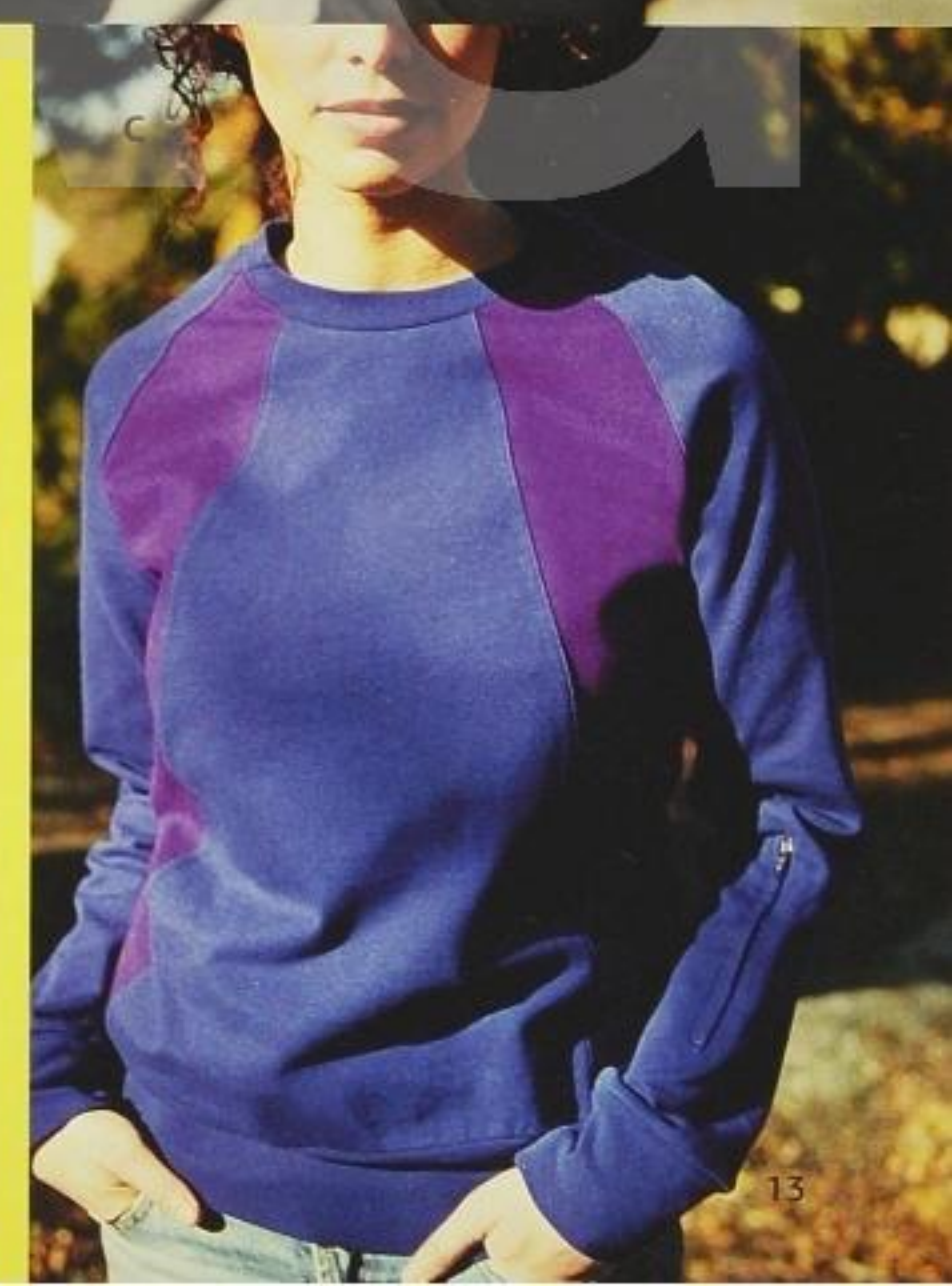


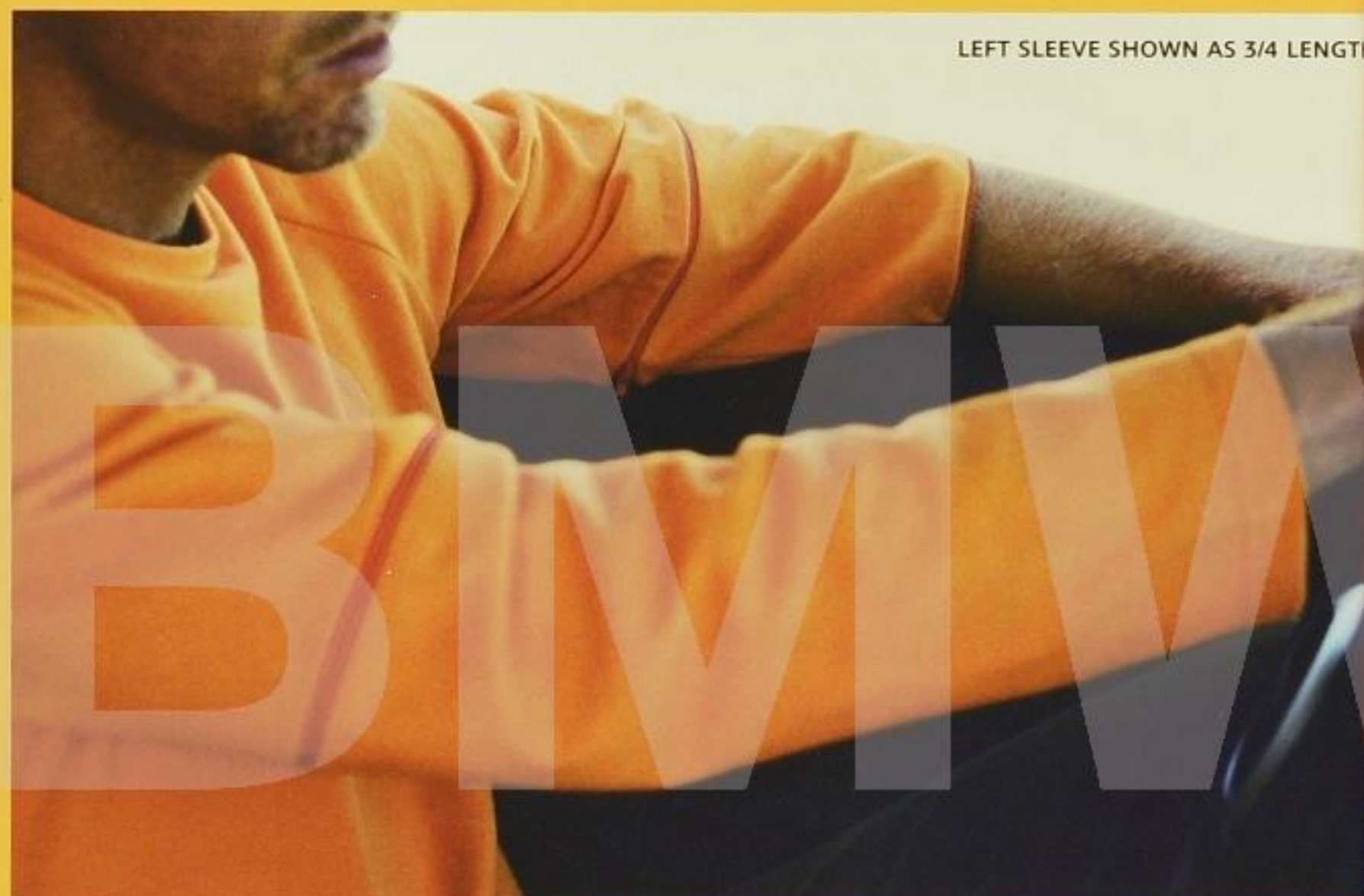
Men's sizes S-XL

Black/Grey 99 00 0 002 825 to 828

Grey/Red 99 00 0 002 867 to 870

\$47.00





LEFT SLEEVE SHOWN AS 3/4 LENGTH



SHOWN AS FULL LENGTH SLEEVE



SUNTAN T

100% cotton jersey. The SunTan T is designed to embrace the unknown. Zip-off sleeves let you wear the shirt seven different ways. Whichever way, you'll meet the dress code, rain or shine. Imported.

Unisex sizes XS to XL

Orange 99 00 0 002 843 to 847

Indi Blue 99 00 0 002 848 to 852

\$52.00



TWODAY T

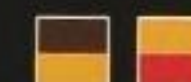
You never know where the road might take you. You could find yourself a hundred miles away from a change of clothes. At moments like that, this reversible T keeps you fresh, outside-in or inside-out. 100% cotton jersey. Imported.

Men's sizes S-XL

Brown/Orange 99 00 0 002 835 to 838

Orange/Red 99 00 0 002 839 to 842

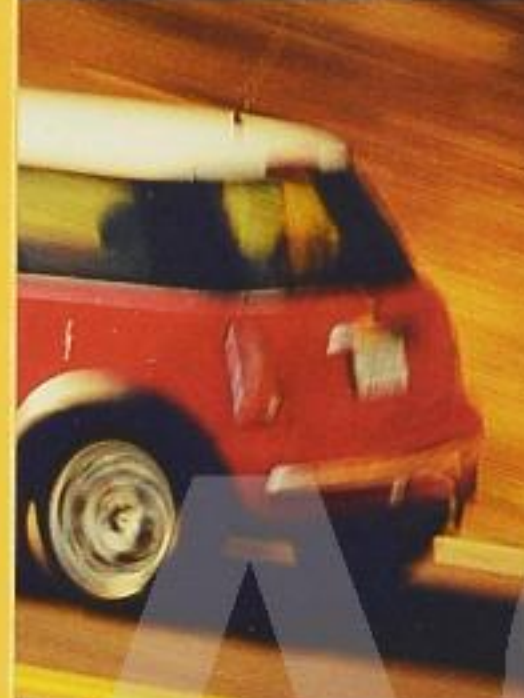
\$27.00



WORK IT.

Take a closer look at MINI MotoringGear. Get under the bonnet and take a gander at what powers the line. You'll see that this is not your run-of-the-mill, slap-a-logo-on-a-golf-shirt, automotive enthusiast clothing line. It's thought out, engineered and tested, manufactured not just for the love of MINI, but for the love of motoring. The Chamois Jacket has chamois sleeves so you can detail your car at a moment's notice. Numerous pockets on the not-coincidentally-named Motoring Jacket ensure that you're always equipped. And the zip-off sleeves of the SunTan T account for every scenario the sun has to offer. Now kick the tires. You'll notice high quality fabrics and distinctive graphics. You'll see contrasting stitching and a great selection. Take MotoringGear for a drive and you'll quickly realize that it's not just made for a run around the block. It's made for the long haul.

SHOWN AS FULL LENGTH SLEEVE



A



B

**B. MINI BABY T**

Short sleeve cotton/Lycra stretch for a flattering fit.

Women's sizes S-XL
Black/White Letters. Imported.
80 14 0 140 836 to 839

Women's sizes S-L
Red/Yellow Letters. Made in USA.
99 00 0 003 108 to 110

\$23.00

**C. STRAIGHTAWAY SHIRT**

Cotton blend long sleeve shirt, with "racey" MINI graphics. Imported.

Men's sizes M-XXL
80 14 0 140 856 to 859

\$44.50

A. MOTORING JACKET

100% semi-brushed polyester with contrast stitching and MINI details. A padded left elbow offers comfort to serious motoring. Imported.

Women's sizes S-L

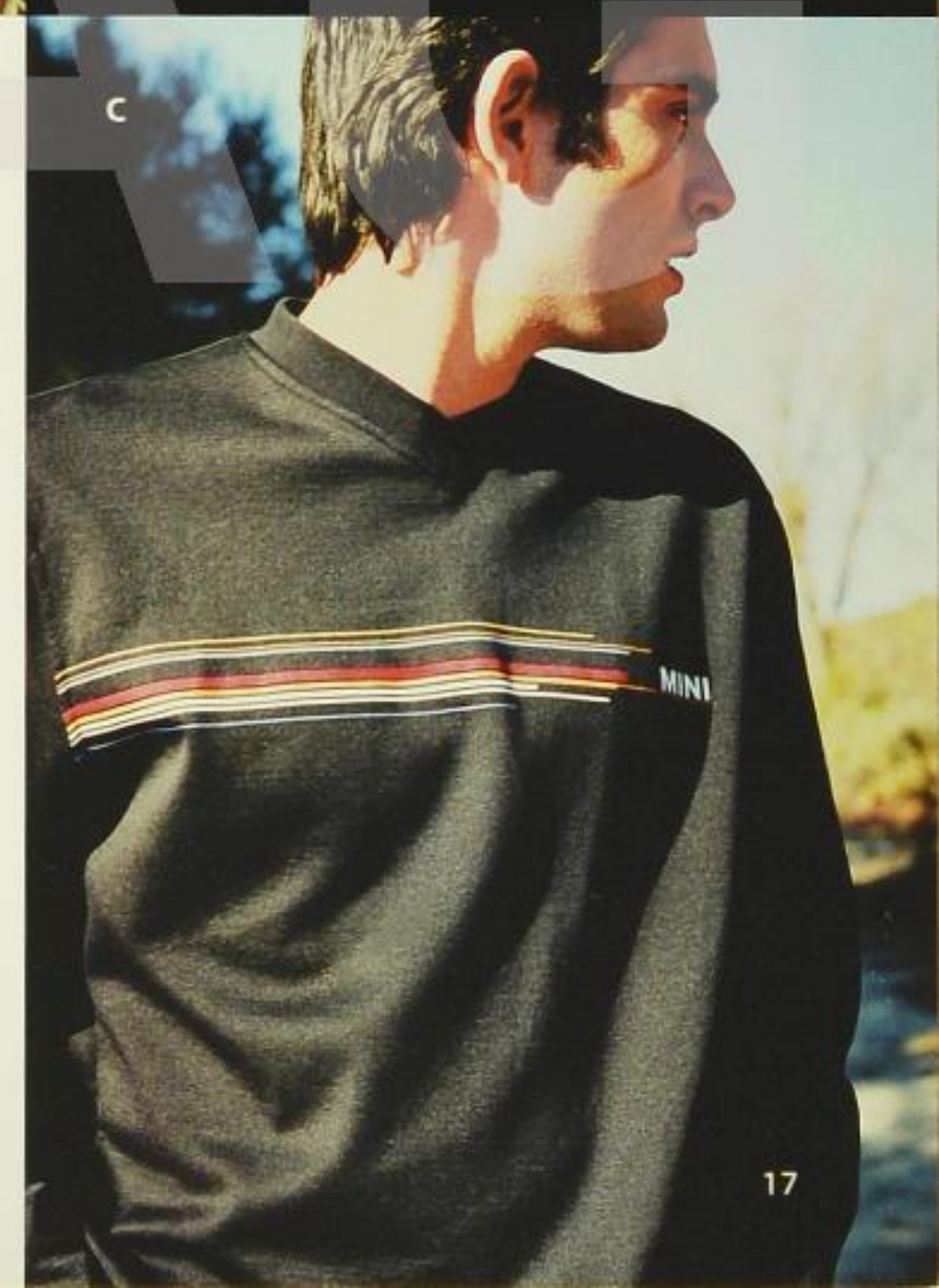
Black w/Red Stitching
99 00 0 002 885 to 887

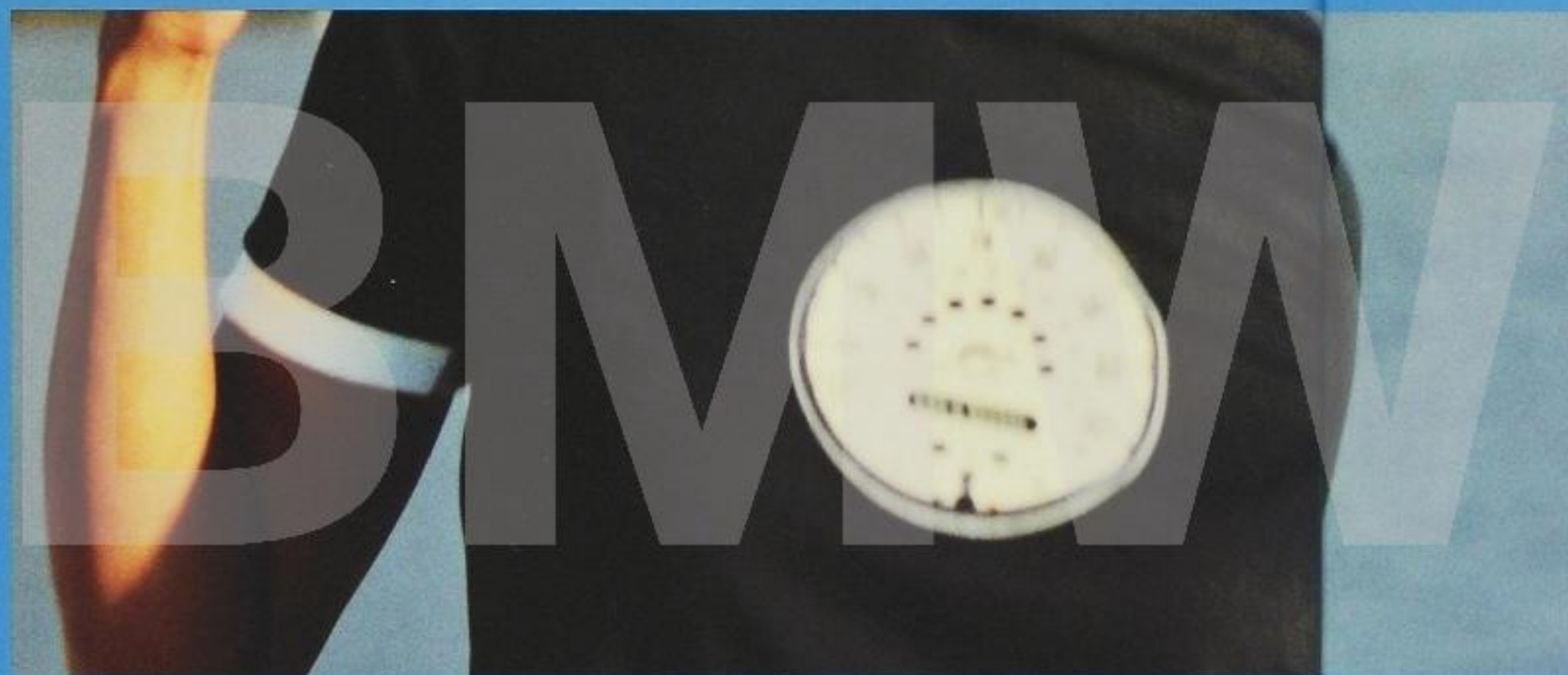
Red w/Black Stitching
99 00 0 002 888 to 890

\$112.00



C





EXPRESS YOURSELF.

You can't pretend to be a motorer. It's something you are, not something you pose as to make a statement. It's a state of mind you arrive at by taking the road less traveled and leaving it better than you found it. You arrive there by being yourself. And that's a road you will never find on a map.

Speedometer T, p.20



A



B



C



D



E



F

A. SILO T

100% cotton. Made in USA.
Men's sizes S-XL
99 00 0 003 088 to 091
\$24.00

B. CLASSIC MINI T

100% cotton raglan.
Made in USA.
Unisex sizes XS-XL
99 00 0 003 103 to 107
\$24.00

C. S-TURN T

100% cotton. Made in USA.
Men's sizes S-XL
99 00 0 003 092 to 095
\$24.00

D. SPEEDOMETER T

100% cotton. Made in USA.
Men's sizes S-XL
99 00 0 003 096 to 099
\$25.00
Women's sizes S-L
99 00 0 003 100 to 102
\$23.00

E. SILO T

100% cotton raglan.
Longsleeve. Made in USA.
MINI reflectant label
on back neck.
Men's sizes S-XL
99 00 0 003 084 to 087
\$27.00

F. LET'S MOTOR T

100% cotton. Imported.
Unisex sizes XS-XL
Black/White Graphics
99 00 0 002 741 to 745
Indi Blue/Orange Graphics
99 00 0 002 746 to 750
\$24.00



G. THIRTYSEVEN T

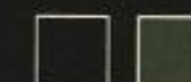
Slim fit 100% cotton jersey with a two-color flock print graphic celebrating the 1964 Monte Carlo win. Imported.

Men's sizes S-XL

Black 99 00 0 002 733 to 736

British Racing Green

99 00 0 002 737 to 740

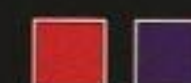


Women's sizes S-L

Red 99 00 0 002 766 to 768

Blulette 99 00 0 002 769 to 771

\$24.00





A



B



C



D



E



F

A. SILO T

100% cotton. Made in USA.
Men's sizes S-XL
99 00 0 003 088 to 091
\$24.00

B. CLASSIC MINI T

100% cotton raglan.
Made in USA.
Unisex sizes XS-XL
99 00 0 003 103 to 107
\$24.00

C. S-TURN T

100% cotton. Made in USA.
Men's sizes S-XL
99 00 0 003 092 to 095
\$24.00

D. SPEEDOMETER T

100% cotton. Made in USA.
Men's sizes S-XL
99 00 0 003 096 to 099
\$25.00
Women's sizes S-L
99 00 0 003 100 to 102
\$23.00

E. SILO T

100% cotton raglan.
Longsleeve. Made in USA.
MINI reflectant label
on back neck.
Men's sizes S-XL
99 00 0 003 084 to 087
\$27.00

F. LET'S MOTOR T

100% cotton. Imported.
Unisex sizes XS-XL
Black/White Graphics
99 00 0 002 741 to 745
Indi Blue/Orange Graphics
99 00 0 002 746 to 750
\$24.00



MINI MIGHT.

When Paddy Hopkirk's Mini Cooper S won the storied Monte Carlo rally in 1964, it stunned the auto world and catapulted Mini to the top of high-performance driving. That car wore the number 37 with pride. Now you can, too. And that's only the beginning. MINI's racing legacy goes back to the original 997cc Cooper S (S for "Sport" or for "Special" depending on the source), developed by John Cooper in 1961.

MINI RALLY VICTORIES

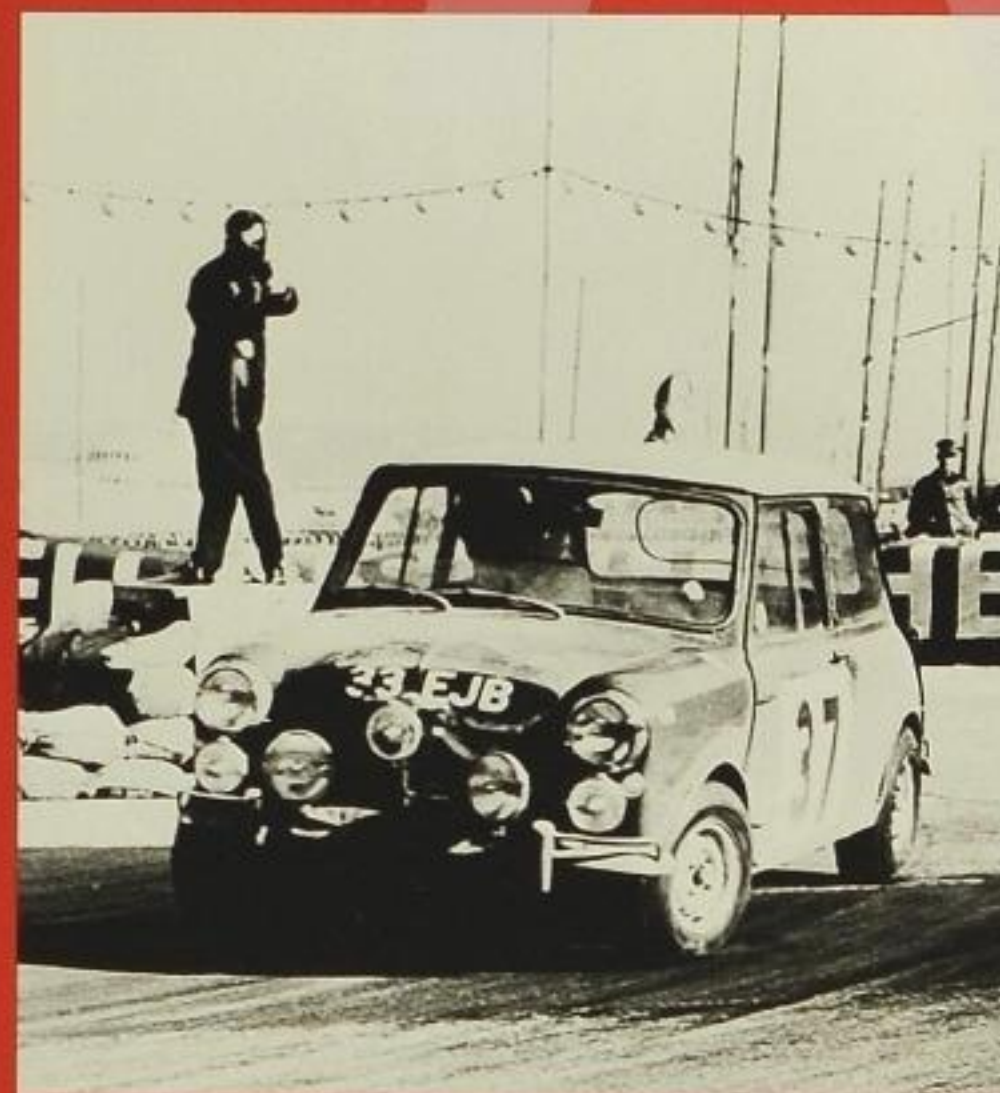
1962 Tulip Rally
1962 Baden-Baden Rally
1963 Trifels Rally
1963 Alpine Rally
1964 Monte Carlo Rally
1964 Tulip Rally
1964 Tour de France

1965 Monte Carlo Rally
1965 Circuit of Ireland
1965 Geneva Rally
1965 Czech Rally
1965 Polish Rally
1965 1000 Lakes Rally
1965 Munich-Vienna-Budapest Rally
1965 RAC Rally

From time to time, we'll introduce more items that celebrate this legacy and the great cars that created it, with historic racing numbers and the signature two-tone color schemes created to identify MINI entrants. Some of these cars, such as the 1962 Monte Carlo entry driven by Rauno Aaltonen, never won a race. But it's not really about the winning. It's about doing things nobody else thought we could.

1966 Circuit of Ireland
1966 Tulip Rally
1966 Acropolis Rally
1966 Austrian Alpine Rally
1966 Scottish Rally
1966 Czech Rally
1966 1000 Lakes Rally

1966 Munich-Vienna-Budapest Rally
1967 Monte Carlo Rally
1967 Circuit of Ireland
1967 Sebring 3 Hour Race
1967 Acropolis Rally
1967 Geneva Rally
1967 1000 Lakes Rally
1969 Salzburg Rally



A



B

A. REVERSIBLE BUCKET HAT

100% washed chino twill. With different colors on each side so you can flip your lid for a new look. Imported. One size.

Red/Black 99 00 0 002 695
 Orange/Tan 99 00 0 002 696
 British Racing Green/Blue 99 00 0 002 697

\$15.00

**B. POCKET BUCKET HAT**

100% washed chino twill with a side pocket for bait or booty. Imported. One size.

Red 99 00 0 002 698
 Black 99 00 0 002 699

\$16.00



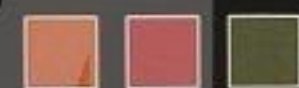
22

C. COLOR CAPS

100% washed chino twill.
 Made in USA. One size.

Pumpkin 99 00 0 002 701
 Tommy Red 99 00 0 002 702
 Sage 99 00 0 002 703

\$16.00



C

**SANDWICH CAP**

Structured, low profile 100% brushed cotton fitted cap with spandex and elastic sweatband. LET'S MOTOR™ embroidered in red on back of cap. Stretches to fit sizes 6 3/4" to 7 1/2". Imported.

99 00 0 002 700

\$18.50

23



A

A. DRIVING GLOVES

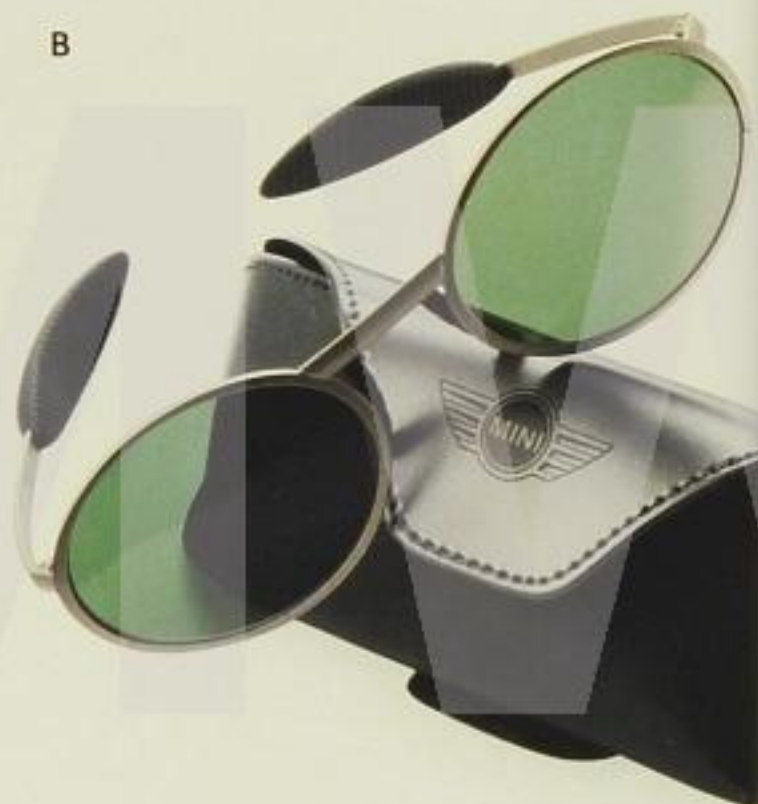
Get a good grip on serious motoring with stylish performance gloves, made of the finest Nappa leather, with added elasticity for handling those S-turns. Embossed MINI snaps. In black and silver. Imported.

Men's sizes M-XL

99 00 0 003 119 to 121

\$38.00

B



B. MINI SUNGLASSES

Created exclusively for MINI by a London designer. Dark gray lenses and silver-gray frames, with curved, padded ear-piece. Protective case included.

80 25 0 026 829

\$66.00

C



C. MOTORING TOTES

Over-the-shoulder, canvas tote with style that's pure MINI. Signature MINI colors contrasted by a bonnet stripe that is reminiscent of the Cooper S. Cotton blend with MINI details and leather straps. Imported.

Red/White Stripe 99 00 0 002 714

Olive/Orange Stripe 99 00 0 002 715

Bluette/Light Blue Stripe 99 00 0 002 716

Canvas/Orange Stripe 99 00 0 002 717

Black/Red Stripe 99 00 0 002 718

\$52.00



MINI WATCH

Inspired by actual MINI details. Housed in a stainless steel case with alloy bezel. Minutes are displayed on a graphic inspired by the speedometer face, hours are shown in the oval window. Buckle up with a metal strap that looks like a seat belt.

80 26 0 025 666

\$75.00

A. DYNAMO FLASHLIGHT

Never worry about dead batteries while motoring with this ingenious light, which is self-powered by a crank handle.

99 00 0 003 154

\$10.00



A

B. THERMOS MUG

Custom designed stainless steel mug, 4 3/4" size to fit perfectly in your "mini" front console cup holders. A 6", 14 oz thermos also available to meet the needs of your passengers in the back.

6" 99 00 0 003 023

Price: \$12.00

4 3/4" 99 00 0 003 150

\$11.75



B

C. MINI ADVENTURE TOOL

A compass, flashlight, thermometer, signal mirror and whistle all in one compact tool, ready for whatever the road may bring. With MINI logo.

99 00 0 002 706

\$17.00



C



D

D. MINI PLUSH CAR

Snuggle up to MINI with hand-sewn, high quality, washable plush, with signature contrasting colors.

Approximately 16"x10"x7"

80 28 0 009 458

\$38.00



E

E. MINI RUCKSACK

Mobile storage for the young motorer, washable plush and seatbelt designed straps.

80 28 0 009 472

\$45.00



F

F. MINI BABY RACER AND TRAILER

Designed by MINI designers with non-fading plastic, super-direct steering and rubber tires to protect flooring. Both include 12-month warranty.

Baby Racer

80 93 0 009 058

\$55.00

Trailer

80 93 0 009 060

\$30.00

G. KID'S LONG SLEEVE RACER T

100% cotton. You don't need a license to be a motorer. Imported.

Kids sizes 4, 6, 8

99 00 0 002 784 to 786

\$17.00



G

H. KID'S TRACK T

100% cotton. The perfect look for the go-kart derby. Imported.

Kids sizes 4, 6, 8

99 00 0 002 790 to 792

\$15.75



H

I. MINI VINTAGE COLLECTION

Celebrate MINI's racing legacy with this vintage photo collection.

Vintage Mug

9900 0 003 115

\$16.00

Vintage Mouse Pad

9900 0 003 116

\$6.50

Vintage Magnet

99 00 0 003 117

\$2.00



I

A

A. PICTURE FRAME

A MINI magnet holds the photo in an oval plastic disc with stainless steel base. Disc diameter: 7.8"

80 23 025 664

\$35.00

B. MINI UMBRELLA

Decorated with MINI design sketches, includes an ultra-compact, transparent plastic case that fits perfectly in a MINI door compartment and hermetically seals wet umbrella until you have a chance to dry it. Just 23.6cm long, but has a 67cm diameter.

80 23 0 025 665

\$36.00

B



28

**MINI DISC GEAR**

Hard plastic, heat resistant clamshell case with lint-free fabric lining, protects 20 CD's. Fits perfectly in the MINI door compartment.

Orange 99 00 0 002 692

Black 99 00 0 002 693

Red 99 00 0 002 694

\$27.00

C

C. CUCKOO CLOCK

This speedometer face keeps time, launching the MINI out of its garage hourly with a distinctive engine sound. At night, a light sensor deactivates the "chime" automatically.

80 26 0 025 667

\$85.00

D. MINI SOLAR/CRANK RADIO

This self-powered AM/FM radio can be wound up with a hand crank or powered by solar cells or an NiCd rechargeable battery. Includes a headphone jack, AC adapter and one-year warranty.

80 23 0 016 063

\$105.00

D



29

A. MINI KEYCHAIN

That unmistakable miniature in matte nickel, attached to a sturdy metal clasp.

99 00 0 002 708

\$14.00



A

B. HORSESHOE KEYCHAIN

Stylish and sturdy, with a steel cable and matte nickel clasp.

99 00 0 002 710

\$18.00



B

C. MINI DESIGN PEN

Ballpoint pen with black refill, stored in a brushed aluminum cigar-style case.

80 24 9 430 444

\$14.00



C



D

D. MINI PIN

Enameled and embossed metal, featuring MINI signature lines and contrasting colors.

Blue 80 57 0 016 008

Red 80 57 0 018 018

\$1.50 each



E

E. MINI PEN SET

Genuine MINI design with ball point pen and black ink pen.

80 24 0 140 549

\$35.00



F

F. MINI SYMBOL PIN

Stick Lapel Pin
99 00 0 002 711

\$4.50

Small Logo Pin
80 57 9 430 441

\$2.50

G. MINI LOGO KEYCHAIN

Steel cable and screw-action clasp with double-sided, enamel MINI badge.

80 23 0 016 009

\$9.00



G

H. MINI MOUSE PAD

You can motor and surf at the same time.

80 57 0 016 010

\$5.50



H

I. COMPASS KEYCHAIN

Sports compass for your motoring adventures with convenient split ring. MINI logo on back.

99 00 0 002 705

\$10.00



I



A

MINI COLLECTIBLE MINIATURE

A. 1:18 SCALE

The original car's CAD data and the critical eye of its designer make sure that these miniatures feature exacting details. Assembled largely by hand, approximately 9" in length.

Silver 80 43 0 029 831
 Red 80 43 0 029 832
 Green 80 43 0 029 833
 Red/White bonnet stripes 80 43 0 139 888
 Green (right-handed) 80 43 0 140 768
 Solar Red (right-handed) 80 43 0 140 767

\$70.00

B. 1:43 SCALE

Features all of the characteristics that make MINI so unique, including some details that can only be seen with a magnifying glass. Approximately 3.53" in length.

Yellow 80 42 0 029 827
 Black 80 42 0 029 828
 Solar Red 80 42 0 029 829
 Green 80 42 0 029 830

\$30.50

B



C



C. 1:87 SCALE

A unique collectible because of its combination of scale and detail, this MINI is small in size but large in craftsmanship. Approximately 1.56" in length.

Blue 80 41 0 029 826
 Silver 80 41 0 029 825
 Yellow 80 41 0 029 821
 Solar Red 80 41 0 139 356

\$19.50



NO POSTAGE
 NECESSARY
 IF MAILED
 IN THE
 UNITED STATES

BUSINESS REPLY MAIL

FIRST-CLASS MAIL PERMIT NO. 19 MONROE TWP NJ

POSTAGE WILL BE PAID FOR BY ADDRESSEE

MINI INFORMATION
 PO BOX 8000
 MONROE TWP NJ 08831-9965



WRITE ON.

This postcard began life strapped to a MINI MotoringGear catalog. It has motored countless miles to make its way to you. To see the car that inspired that journey and to learn more about MotoringGear, go to MINIUSA.com.

To:



READ ON.

Informed motoring is good motoring. Complete and return this form and we'll put you on our mailing list. We'll send you interesting and informative stuff. And we promise not to share your info with anyone else.

First Name _____ Last Name _____

E-Mail Address _____

Address _____

City _____ State _____ Zip Code _____

Telephone Number _____

☐ Male ☐ Female

Do you plan to purchase MINI MotoringGear this year? ☐ Yes ☐ No

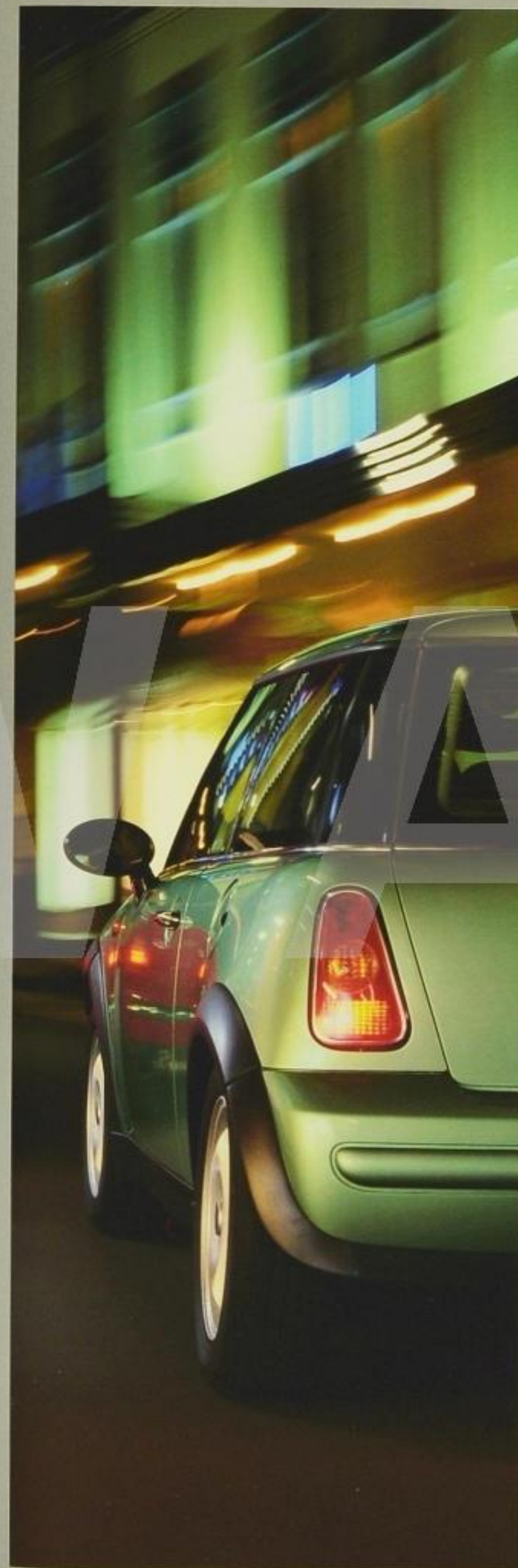
How did you receive this catalog? ☐ Dealer ☐ Auto Show ☐ Friend
☐ Other (Specify) _____

Do you currently own a MINI? ☐ Yes ☐ No

Comments: _____



MINI. LET'S MOTOR.™



D



D. REMOTE CONTROL MINI

With remote control steering (at 27 or 40Hz) and a rechargeable battery that lasts twenty minutes, this incredibly detailed, 1:12 scale turbo action MINI motors up to 9 MPH with a 50 foot range. Suitable for ages 2 and up.

80 45 0 139 873

\$110.00

BMW AG

MINI. LET'S MOTOR.™

All prices are suggested retail prices and are subject to change. Actual prices may vary and depend upon MINI dealer. Prices exclude taxes and/or shipping and handling charges. Check with your authorized MINI dealer for complete accuracy of information and availability.

©2002 MINI, a division of BMW NA, LLC.

This brochure, or any portion thereof, may not be reproduced without the express written permission of BMW NA, LLC. Printed in USA.

To find the nearest MINI dealer or to shop online, go to MINIUSA.com.

MGO 201-CS