

The BMW 3 Series Convertible



BMW AG

Impressions
Pages 4–11

Drive technology
Pages 12–14

Safety
Page 15

Interior
Pages 16–17

Personal Line
Page 18

Special equipment
and BMW Individual
Page 19

BMW Service
Pages 20–21

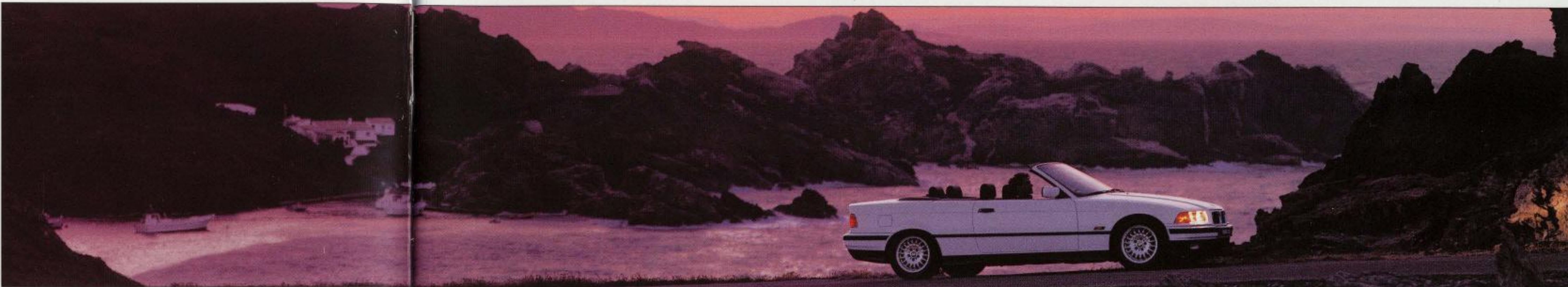
Tables

Standard equipment
Pages 22–23

Specifications
Page 24

Special equipment
Page 25

Personal Line
Pages 26–27



Pure aestheticism and highest technical standards – bringing both into harmony was our engineers' goal in developing the BMW 3 Series convertible. This is our interpretation of totally unspoilt driving pleasure. An automobile whose distinct, elegant lines instantly arouse an enthusiastic response. An automobile that impresses above all through superior handling and great long-distance comfort. However you travel – with the roof closed or in classic open-top style – the result is the same: a unique motoring experience. After all, we've designed the BMW 3 Series convertible to ensure it's a joy to drive every day of the year.

A passion for building automobiles – in BMW's case that means fulfilling the highest possible standards in every respect. One result of this philosophy is the stirring shape of the 3 Series convertible. Reflecting state-of-the-art technology that combines fascinating form with exemplary safety.

Much more than a means to an end: the BMW 3 Series convertible embodies our understanding of independent au-

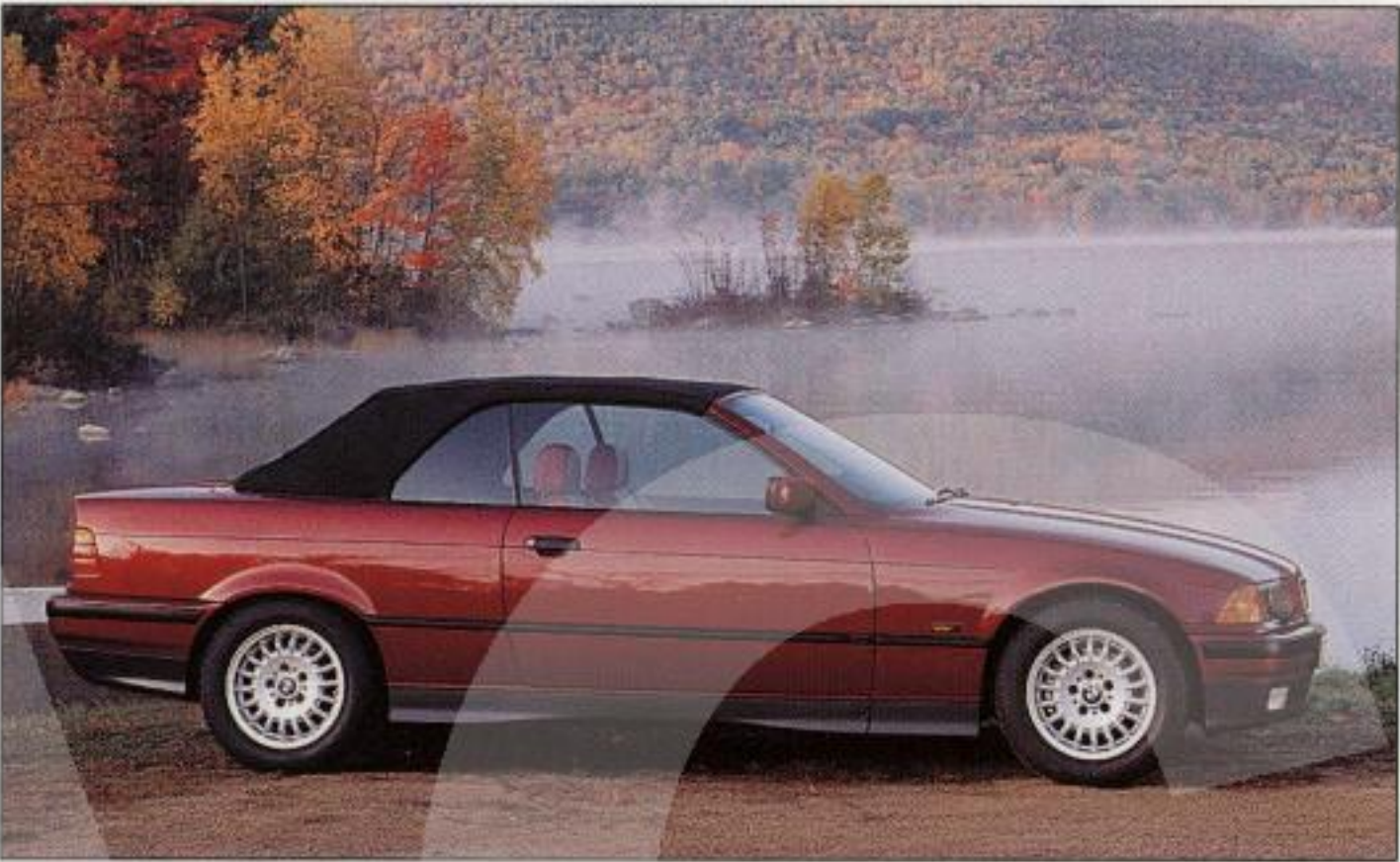
tomotive culture by satisfying a feeling for aestheticism just as much as functional requirements.



The unsurpassed principle of classic elegance: a convertible's typical streamlining with a consciously flat tail to highlight the unmistakable looks.



An optional wind-shield reduces turbulence inside the car and thus gives you virtually draught-free driving pleasure.



The padded, triple-layer fabric top gives the BMW 3 Series convertible an aesthetic image – whether the top is open or closed.

The 3 Series convertible: exclusive, all-year-round motoring pleasure.



Experience exclusiveness whatever the weather in the 3 Series convertible. Surrounded by an interior shaped by sophisticated design, top-quality materials and careful workmanship right down to the tiniest detail, you can enjoy the timeless joys of driving.



Inviting: an interior that satisfies the driver's and passengers' differing needs. A source of unmistakable motoring pleasure – for everyone.



The optional hard-top gives this 3 Series convertible its totally distinctive lines.

The interaction of an excellent suspension with each of the high-performance engines and the power steering, which gives you a sure feel for the road is the basis of this 3 Series convertible's stirring agility and manoeuvrability.



A quality ambience: the driver-oriented cockpit in BMW's typical arched design and the outstanding range of comfort

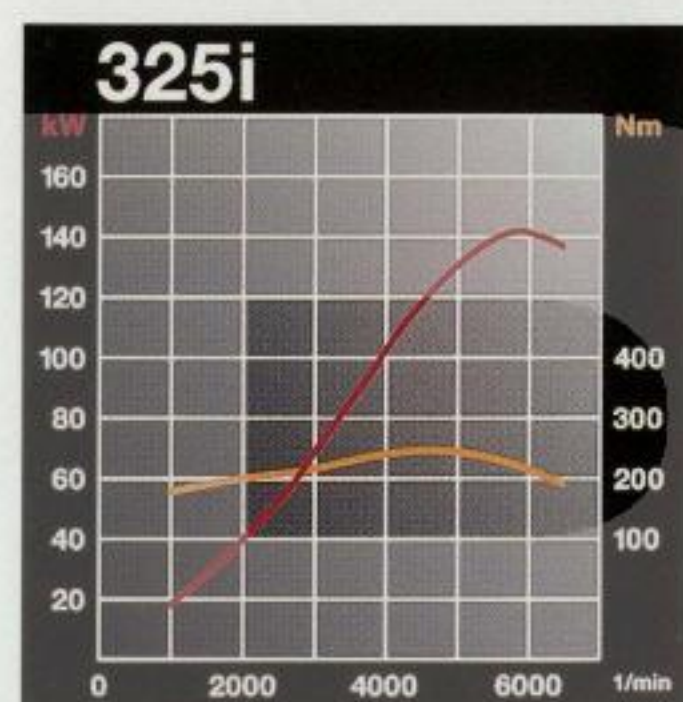
features are the ideal prerequisites for relaxed and pleasant travel.



A cleverly-designed folding top: after comfortably releasing the latches you can easily open the top. Closing it is just as simple. With the optional

power-operated top everything functions almost automatically.

Supreme dynamism – the result, above all, of BMW's sophisticated power units. State-of-the-art engines characterized by an outstanding performance-economy ratio. What's more, their steady surge of power is a key factor in ensuring relaxed, enjoyable driving.

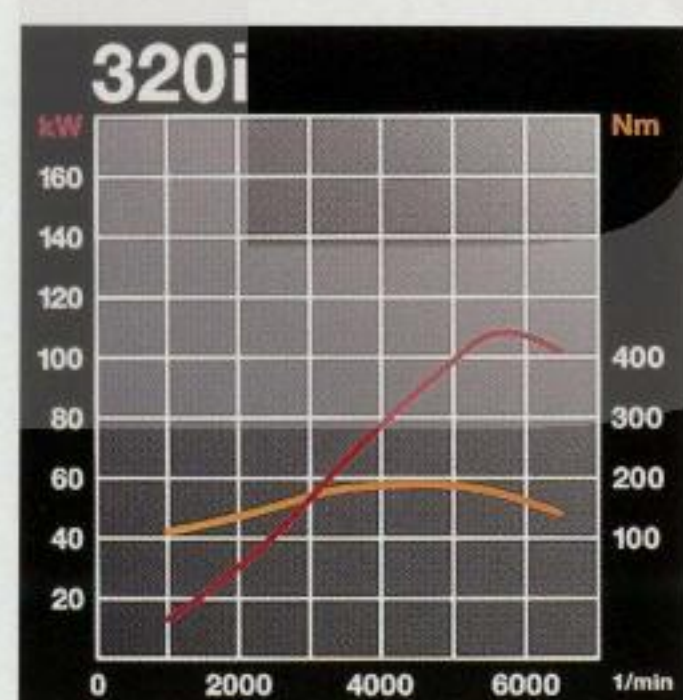


The four-valve, six-cylinder engine in the 325i: rousing performance reserves and an impressive unleash

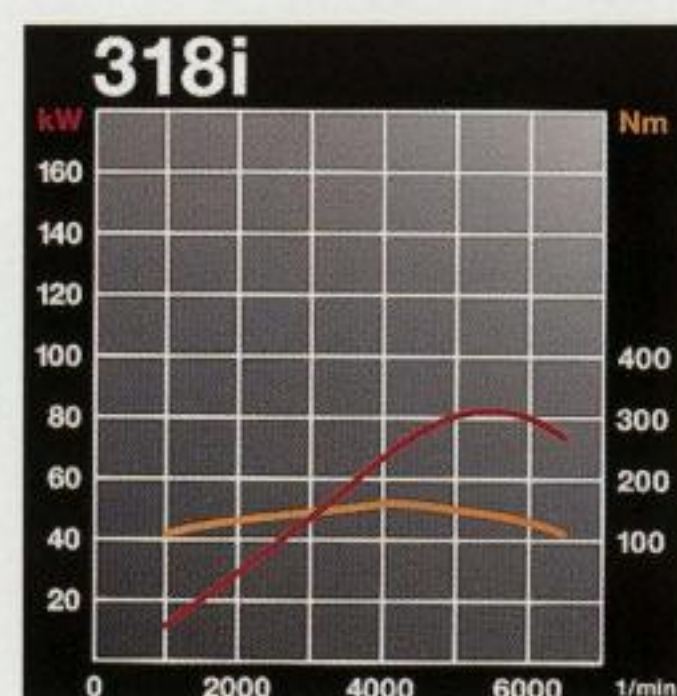
of power combined with silky-smooth running qualities. A fascinating 2.5-litre engine characterized, not least, by economical fuel consumption.



Exemplary innovative propulsion technology: variable camshaft control (VACC) ensures that the six-cylinders' power is unleashed even more steadily and with noticeably improved spontaneity at any revs.



The 2.5- and 2.0-litre six-cylinders: sophisticated power units displaying free-revving, high-torque qualities.



Agile: BMW's 1.8-litre four-cylinder. A compact, free-revving engine in which individual-control intake manifold (ICIM)

is just one of the features contributing to a constant surge of pulling power even at low revs. Numerous other technical features ensure that impressive

performance is linked to favourable fuel consumption.



Cylinder-specific knock control guarantees the best-possible use of fuel and helps take care of the engine. As soon as it begins to knock, the ignition angle and timing are adjusted to

ensure trouble-free combustion under any operating conditions.



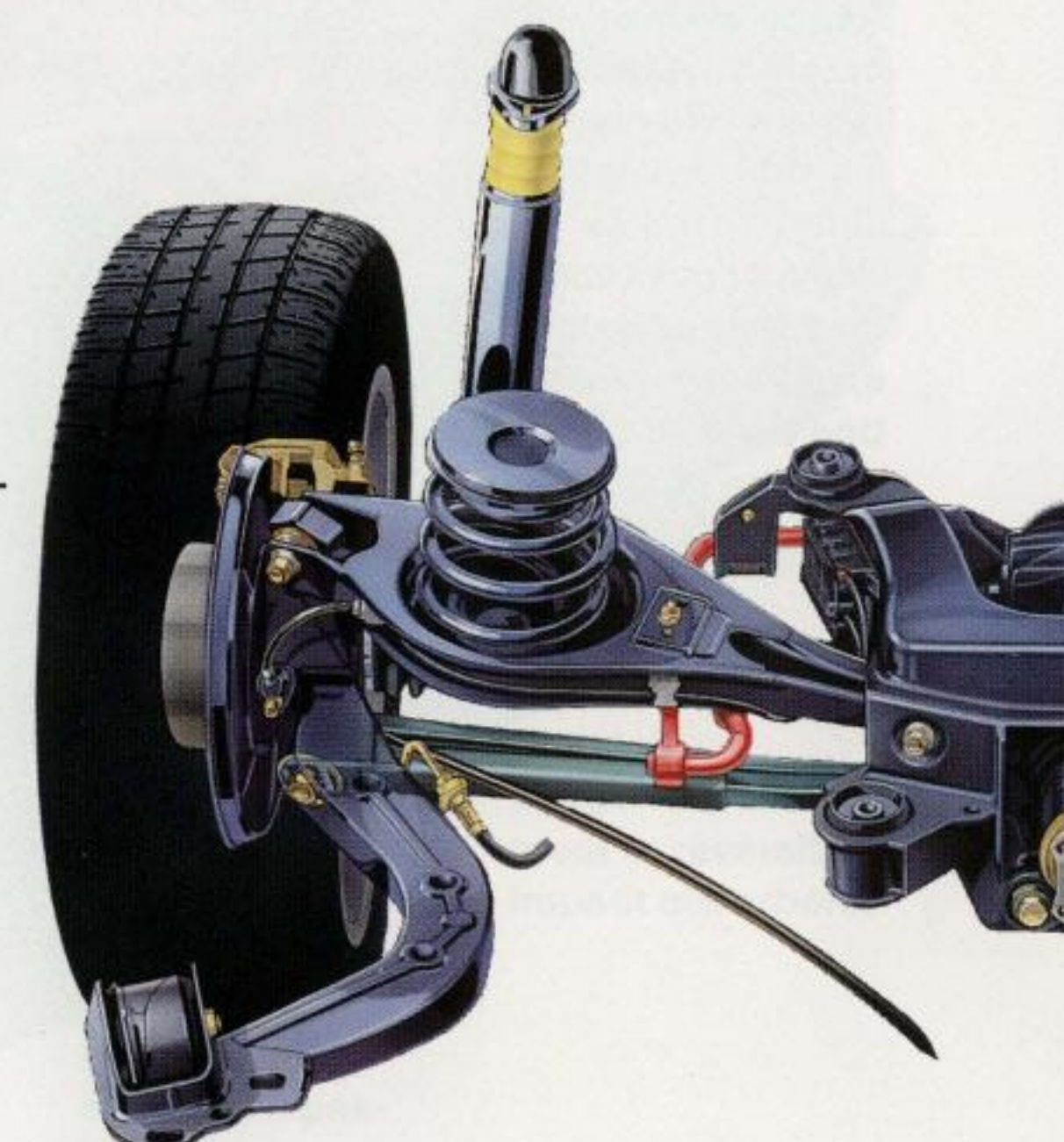
A sophisticated chassis design: the firm but comfortable tuning combines agility and safe handling. A harmonious relationship be-

tween wheelbase length and track width and an optimum, almost 50/50 front-rear weight distribution offer the opti-

mum balance of maximum safety and utmost comfort.

The 3 Series convertible's stirring dynamic driving and outstandingly comfortable motoring qualities are based on the patented central arm rear axle. It ensures safe directional and exem-

plary cornering stability. Vital prerequisites for active safety BMW-style.



Technology Guide

Digital Motor Electronics (DME) controls, monitors and master-minds all the main functions such as ignition and fuel injection as well as numerous ancillary functions, e.g. the oxygen sensor emission control. DME ensures outstanding performance is linked to fuel economy and favourable emission values.

On-board diagnosis, one of the DME's functions, has the job of recognizing malfunctions before they can do any damage. Details of faults are electronically recorded for subsequent display on the BMW Service Tester's screen at the dealership. This makes trouble-shooting easier and keeps repair costs down.

Variable camshaft control (VACC) is a DME-steered function that hydromechanically adjusts the intake camshaft by 12.5° – irrespective of engine speed or the gas pedal's position. As a result, the intake valves are opened late at low revs to improve the idling and true-running characteristics; early in the mid-speed range for higher torque and exhaust gas recirculation to reduce fuel consumption and emissions; and late again at high revs to unleash the engine's full performance.

Four-valve technology with centrally positioned spark plugs guarantees an improved cylinder charge which in its turn is a key precondition of higher performance and torque. The arrangement of two intake and two outlet valves enables the engine to suck in more air or emit more exhaust in a shorter time. What's more, the layout of the four valves results in the most efficient combustion-chamber geometry. And that helps cut fuel consumption.

With the **solid-state distributor system** each cylinder and spark plug has its own ignition coil. The result is improved combustion and more efficient use of fuel. Another advantage is that there are no moving parts to go wrong. What's more, it puts an end to the damage caused by martens bites.

Individual-control intake manifold (ICIM) guarantees an improved torque curve over the entire speed range. At low revs long intake manifolds ensure excellent torque while at high engine speeds the connection butterfly linking the intake manifolds opens up to shorten intake travel and produce high output.

The **two-mass flywheel** ensures that even the few unavoidable variations in torque development caused by the ignition pulses are not transmitted from the engine via the clutch to the transmission. This means that even at very low engine speeds no annoying noises can penetrate the passenger compartment.

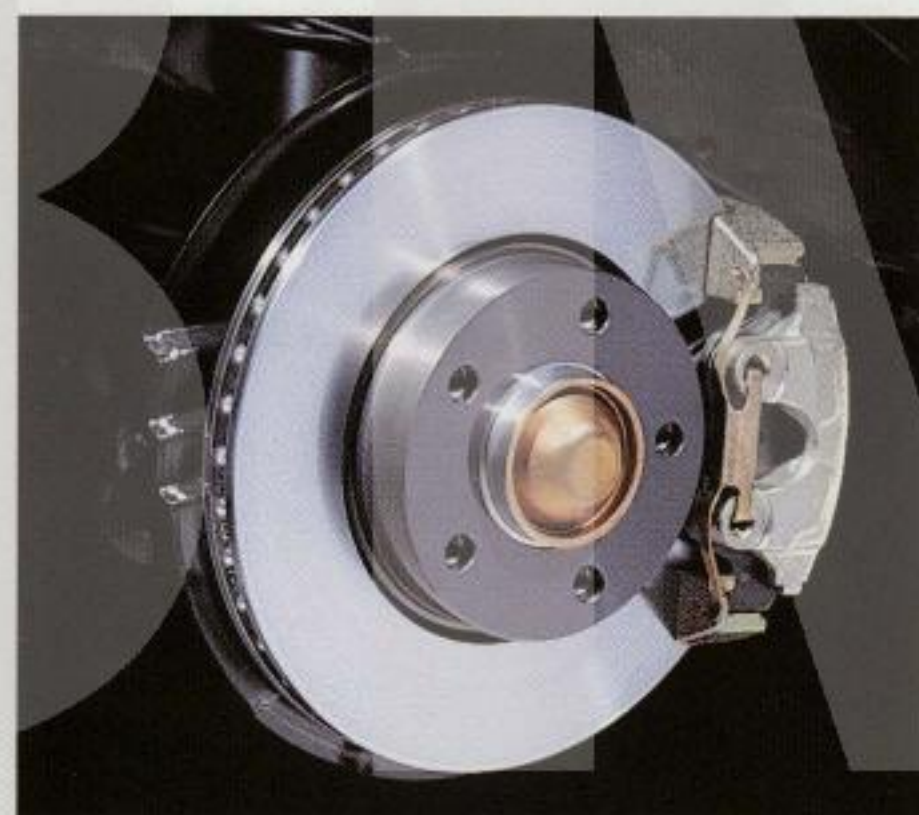
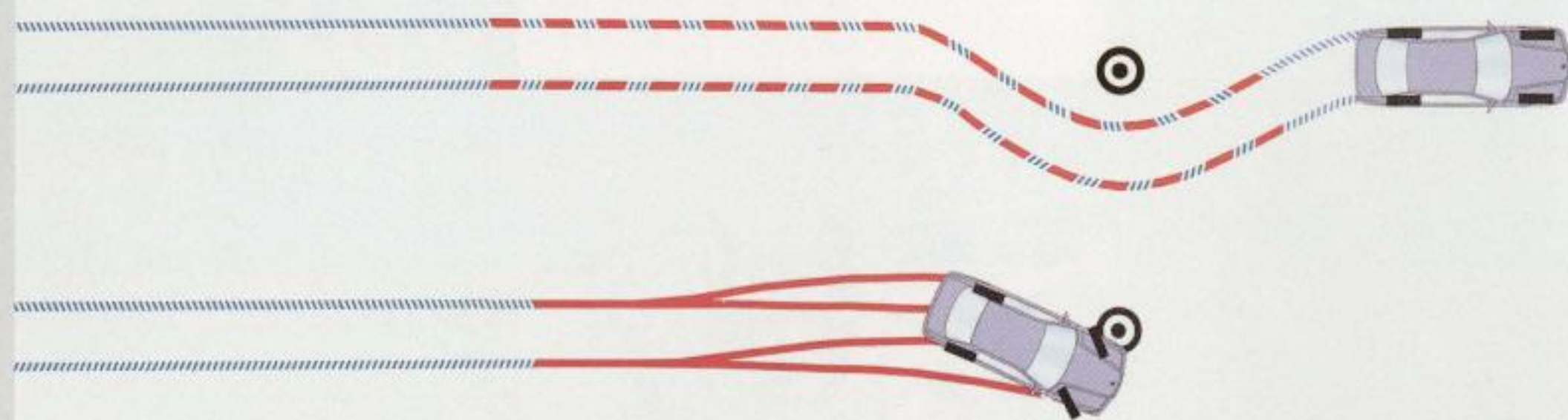
The **central arm rear axle** is a multi-link suspension guided by two transverse links and one trailing link mounted at the so-called central link of the vehicle body. The precise interaction of these links ensures that the wheels always maintain an optimum angle to the road surface irrespective of what the springs are doing. The result is outstanding directional stability. Elastic link mountings mean the rear axle can be selectively steered to give additional cornering stability. They also absorb any minute vibrations caused by uneven road surfaces to give the vehicle occupants an extremely smooth and quiet ride.

With BMW's **electrohydraulic (EH) automatic transmission** power is conveyed hydraulically from the engine to the transmission with the gears shifting automatically as a function of the specific driving situation. Another advantage is that you can choose between a more economical (E) or sporty (S) style of driving. The sporty five-speed automatic in the 325i and 320i shifts down a gear – even at high speeds – to shorten the acceleration phase. It also has a special winter-driving program (*) which shifts up early to permit sensitive driving on slippery surfaces. In contrast, the four-speed automatic in the 318i has an M program which retains the gear chosen to allow you, for example, to start off smoothly in third gear on snow and ice.

BMW's lasting quality is part of our consistent and, as demanded today, comprehensive quality concept. Zinc-plated panels, a basic anti-corrosion system with phosphate coating, a cathodic dip bath and plastic coating, underbody protection and cavity sealing are our contribution to ensuring you have lasting pleasure in driving a BMW. What's more, our production methods and the high proportion of recyclable materials used ensure the conservation of natural resources. In more recent BMW models, for example, over 80 % of the parts can be reused and in the BMW 3 Series more than 50 components are made of recycled plastics.



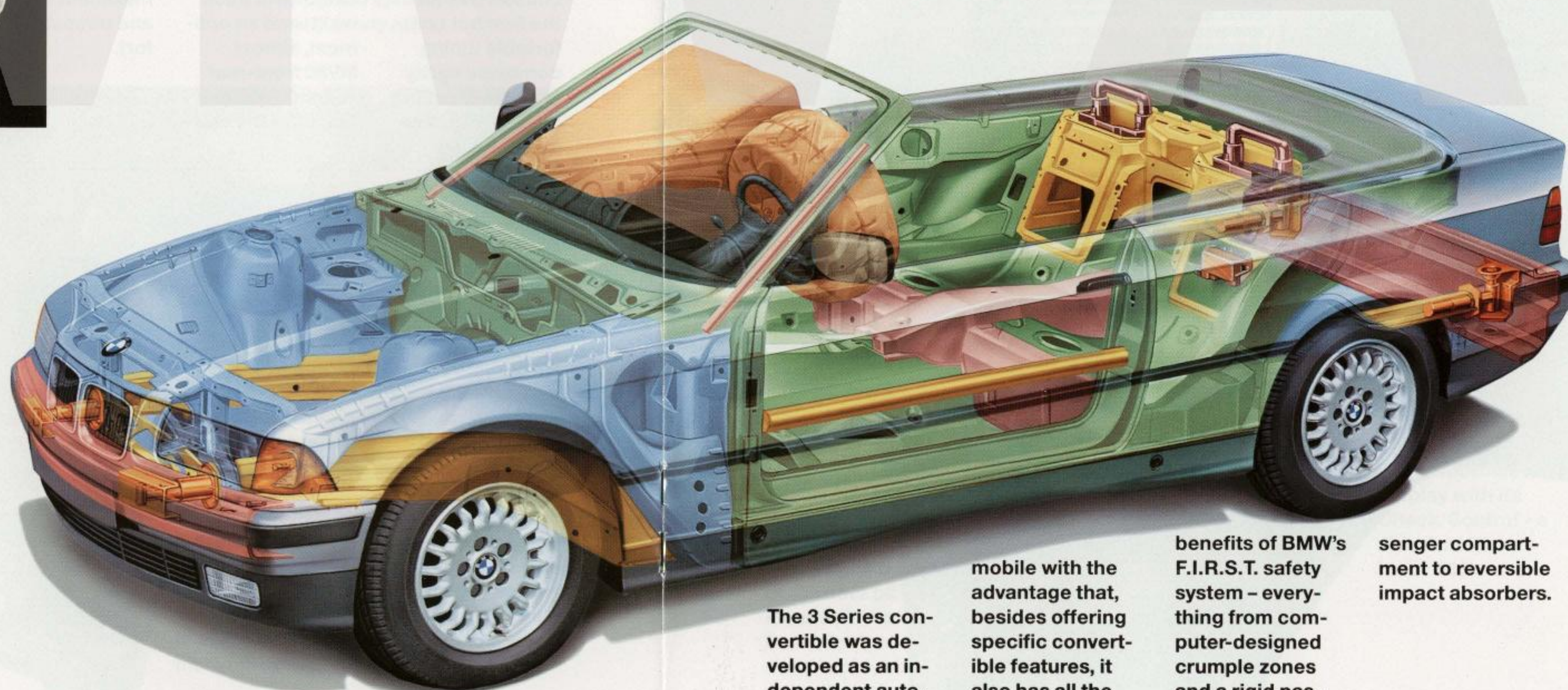
The optional five-gear EH automatic transmission for the six-cylinder engines has three driving programs: for sporty or economical gear selection or for particularly smooth starts, e.g. in winter.



Asbestos-free braking system: large brake discs provide exemplary safety reserves and a convincing performance with excellent retardation even under extreme conditions.

The 3 Series convertible's very advanced ABS offers exemplary safety reserves in critical situations. Even

when you slam on your brakes, the convertible will stay steerable.

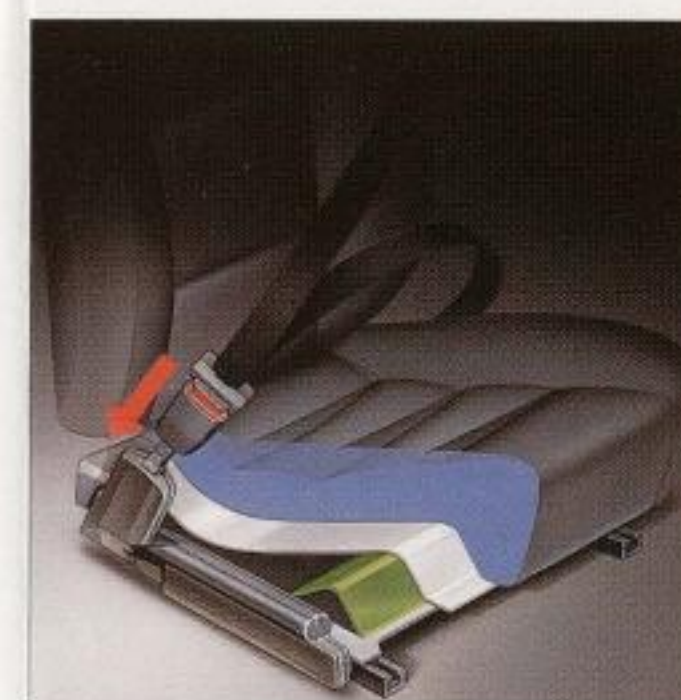


The 3 Series convertible was developed as an independent auto-

mobile with the advantage that, besides offering specific convertible features, it also has all the

benefits of BMW's F.I.R.S.T. safety system – everything from computer-designed crumple zones and a rigid pas-

senger compartment to reversible impact absorbers.



BMW's restraint system: the interaction of safety belt, belt-latch tensioner, belt retainer and submerging protection ensures you are held firmly in your seat in the event of a collision.

The optional active rollover safety system brings a further improvement in the pro-

tection offered to all occupants – even in critical situations.



The best-possible protection for head and chest in a head-on collision: the standard driver's and optional front passenger's air-bag. To ensure the

latter is only triggered off when really required and avoid unnecessary repair costs, the front passenger's seat has an occupation detector.



In BMW's safety concept **F.I.R.S.T. (Fully Integrated Road Safety Technology)** all the elements needed to ensure all-round protection on the road are carefully tuned to one another: active and passive safety, protection of other road users and protection of the vehicle itself.

The high degree of **torsional stiffness and flexural rigidity** of the 3 Series convertible's body is a vital prerequisite for its exemplary safety standards and outstandingly comfortable ride. The windscreen surround is of extremely rigid design. Besides additional door bracings and other specially designed reinforcements, features such as large-scale member systems guarantee an unusually sturdy passenger compartment. What's more, the carefully calculated cinematic-response mechanism of the central-link rear axle and the spring strut front axle is also based on the body's great static and dynamic strength. Last but not least, the body's sturdy design also helps eliminate virtually all the annoying outside noise.

With BMW's **restraint system** the belt-latch tensioner ensures that in the event of a collision, the seat belt sits much more tightly. The belt latch is pulled back in fractions of a second simultaneously tightening the shoulder and lap belts. The submerging protection is a wedge-shaped ramp at the front of the seat which supplements the belt-latch tensioner and belt retainer and helps stop the driver or front passenger "diving" under their lap belts.

With the **active rollover safety system** there are two spring-loaded aluminium bars concealed behind the standard headrests. If the vehicle tilts beyond a critical angle or the longitudinal- or transverse-acceleration limits are exceeded, the roll bars shoot up to a maximum of 27 cm to protect the occupants.

A fascinating atmosphere surrounds you in the 3 Series convertible – right from the very start. Its unmistakably ergonomic design, exclusive comfort features, high-quality materials and careful workmanship down to the very last detail provide the best possible conditions for a relaxingly unique motoring experience.

The optional sports seats are more highly contoured to provide an outstanding lateral hold and though the side panels of the seat and backrest have a noticeably more pronounced profile, they do not restrict movement. Another advantage is that the thigh support can be adjusted lengthways.



The standard seats in shell design are designed for comfort with multi-zone foam padding to meet the most demanding orthopaedic requirements. Their pleasantly firm upholstery of-

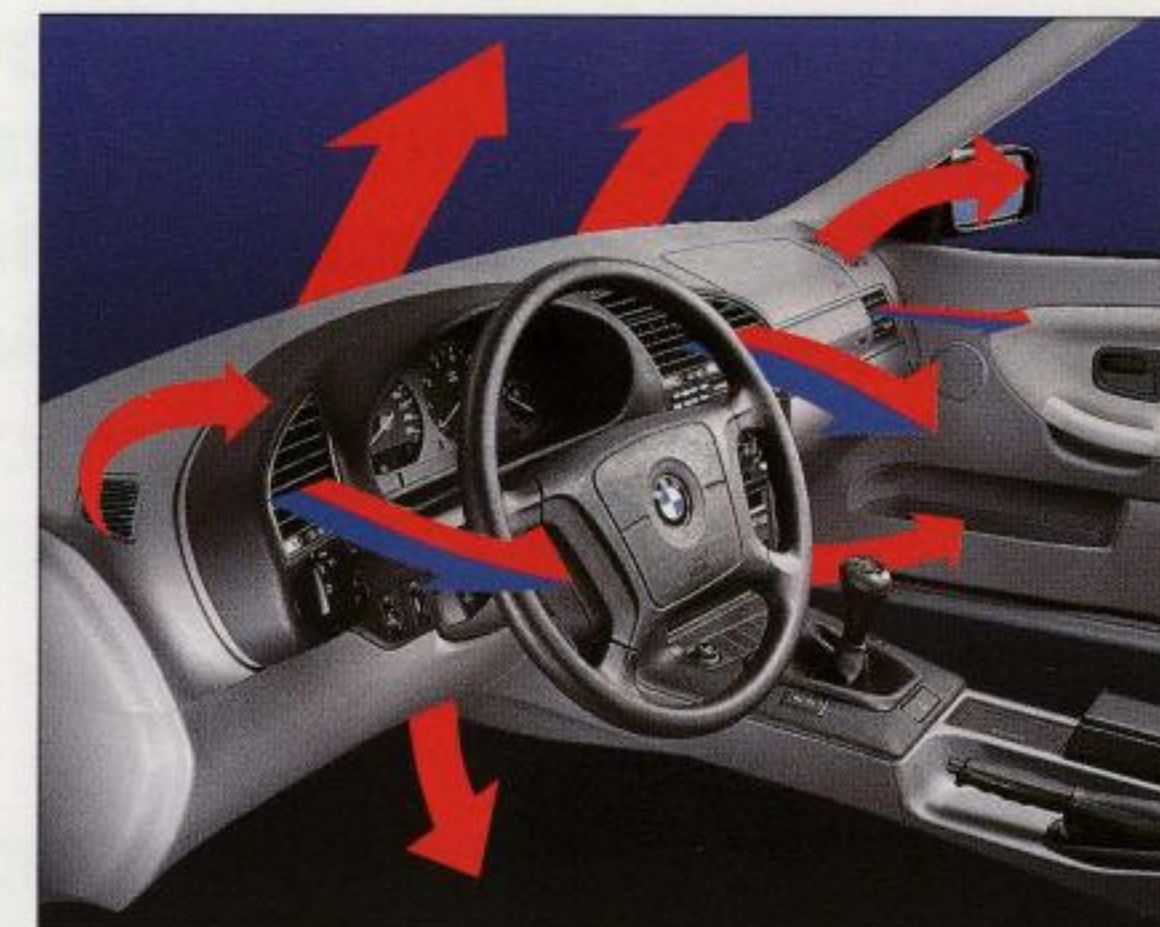
fers a secure lateral hold and good leg support. An additional standard feature is that the driver's and front passenger's seats are height-adjustable.



The optional two-stage seat heater gives you a pleasantly warm seat in no time at all.

A highly efficient heating system ensures a nicely warm interior. Irrespective of the car's speed, the heating system electronically maintains a set temperature and

guarantees an even and efficient flow of air throughout the interior.



Ergonomics BMW-style: the consistently driver-oriented design of the cockpit means all the information you need is provided unequivocally and

fast while all the controls are within easy reach, e. g. the servo switch for the power-operated windows.



The driver-oriented design of the control panel in the centre console ensures that the air-conditioning switches illustrated here or the optional BMW radio are within easy reach. It also means quicker reading of the data shown on the Multi-Information Display with its Check/Control – a standard feature in the 325i.

Technology Guide

The **Service Interval Indicator** tells you when the next service or oil change is due. So you can judge the right time for a service based on how the car is actually used.

The **Energy Control** provides the driver with constant information on the precise fuel consumption at speeds in excess of 20 km/h, thus encouraging a fuel-saving style of driving. The analogue-face display is integrated into the rev counter.

The **Check/Control** monitors all the vehicle's important functions, telling the driver what condition they are in or warning of any faults. Key lamp functions are even monitored when not in use for display on request. All the information is presented in dot-matrix form on the Multi-Information Display (MID) in the centre console, and is backed up by an acoustic signal. The information displayed is subdivided into three priority levels.

The **crash sensor** automatically releases the central locking and turns on courtesy and hazard lights in the event of an accident.

The **Multi-Information Display (MID)** in the centre console provides the driver with important information about how the vehicle is behaving technically. And that means extra safety and reliability. The Check/Control, for example, informs the driver of any malfunctions in dot-matrix form on the MID. And the information provided by the optional on-board computer is also displayed here. The MID also has a built-in digital clock.

The **on-board computer** supplies the driver, on request, with up-to-date information on the outside temperature, average fuel consumption, average speed and estimated time of arrival. It will also warn you about black ice and tell you the time and date. The information can be called up directly via the control panel in the centre console or an extra button on the direction-indicator lever and will then appear on the centre-console display. In addition, you can also use the on-board computer to safeguard your car against theft with your own personal code.

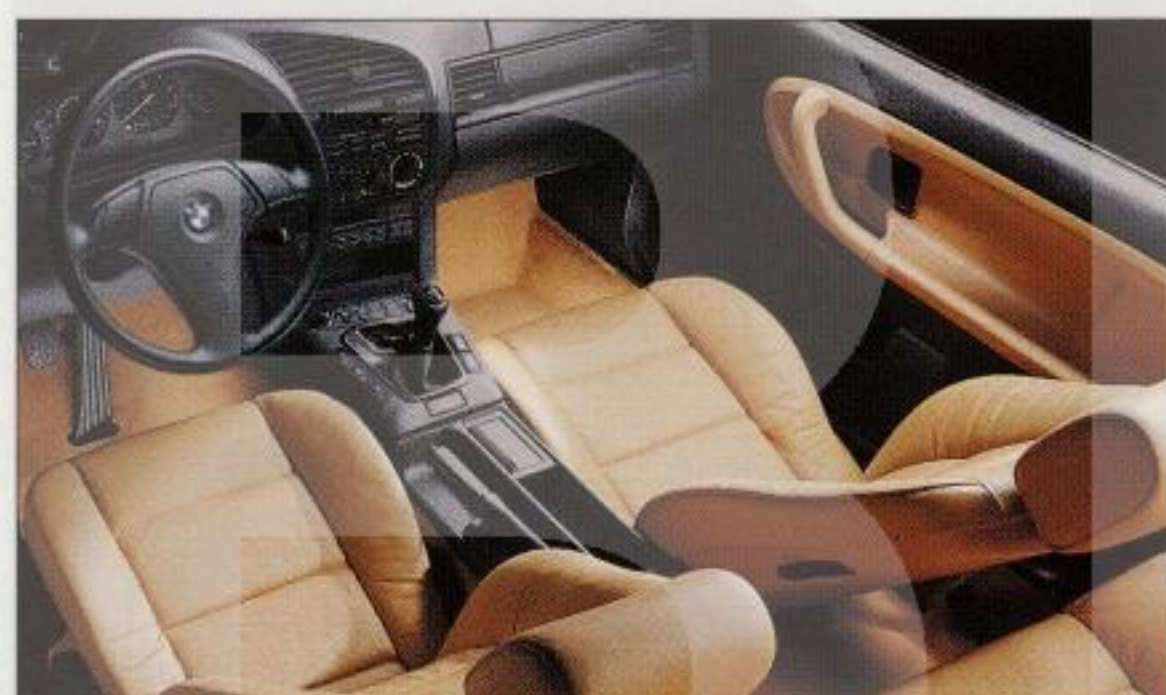
With the BMW Personal Line we have created a special features' concept that offers you distinctive colours for your paintwork, folding top and interior as well as exclusive materials in an unusual diversity of combinations. To give your BMW 3 Series convertible a most personal touch.



Sport seat in Hellgrau leather.



Standard seat in Blauviolett leather.



Standard seat in Safrangelb leather.



You can choose your own colour, seat shape and material in designing your 3 Series convertible's interior. The standard seat is avail-

able in high-quality flat-weave fabric or, optionally, in exquisite leather. For the optional sports seat there is also an exclusive combination of leather and fabric.

What you demand in terms of extra comfort, exclusiveness or safety is met by our extensive range of special equipment. But beyond that you can also have your own, very special wishes fulfilled. BMW Individual offers you the opportunity of a tailor-made BMW 3 Series convertible and the chance to put your very own stamp on a unique automobile.



The hardtop to match your paintwork weighs a mere 28 kilos and turns your BMW convertible into an all-year-round automobile. High-quality workman-

ship and features such as a fabric-lined roof and heated rear window characterize this hardtop. Integrated right from the start into the 3 Series conver-

tible's design, it accentuates its exclusive appearance.



The leather sports steering wheel with airbag offers you maximum safety and its

three-spoke design gives your BMW 3 Series convertible an attractive, sporty appearance. Another striking feature is its special thumb profile.



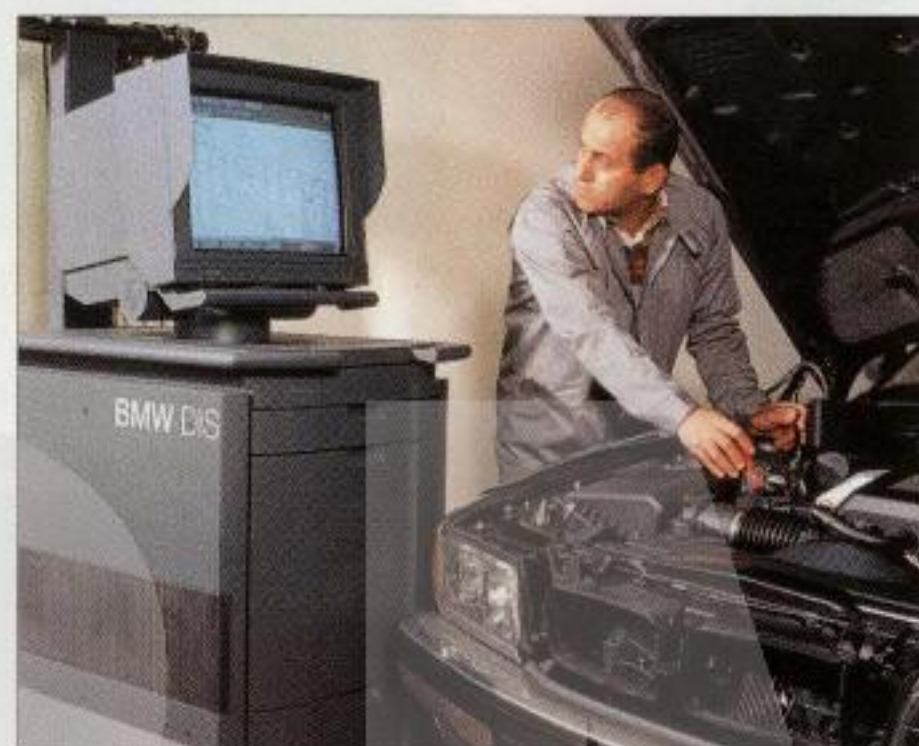
Exclusive paintwork, exquisite wood trims, special materials and choice leather: BMW Individual even turns the most unusual ideas into reality – provided they

conform to our quality standards. Even additional fittings are possible. And whatever your question, you can be sure of advice from experienced specialists.

Classic or dynamic? BMW's original, top-quality light-alloy wheels perfectly match your 3 Series convertible's specific requirements, harmoniously fitting in with its overall appearance. Contact your BMW dealer directly for detailed information about the whole range of light-alloy wheels available.



Service BMW-style. The high standards we apply to our cars and their technical qualities are also applied to the service we offer our customers.



Our first and foremost objective in this context is to offer our customers first-class, personalised service. For we know that only customers satisfied in every respect with the service provided will remain our customers in the long run.

Reliable and economic service BMW-style starts with the development of our cars. Through easy-to-repair design concepts and sophisticated technical systems such as the BMW Service Interval Indicator and BMW on-board diagnosis.

After you have purchased your car, your BMW dealer remains a competent partner in offering you the customer service you rightly expect. Highly qualified specialists and workshops with the most advanced equipment guarantee exemplary service quality – for example by using the most advanced electronic systems to diagnose the specific condition of your car. And data stored within your car's electronic memory is reliably evaluated by the BMW Service Tester when you go to the workshop, allowing rapid and low-cost repair and maintenance.

It almost goes without saying that your BMW workshop uses only Original BMW Parts ensuring quality, reliability and an accurate fit true to BMW's supreme standard. Which is precisely why your BMW dealer gives you a 12-month warranty on the work done and the parts used.

The benefits of a strong partnership with BMW

are of great significance in other areas, too. For our emergency service is always there to help you when you need assistance. And BMW service mobiles are out on the road in many countries to take care of your car whenever the need arises.



Last but not least, the BMW Service Card offers every purchaser of a new BMW all-round assistance in the event of a

breakdown – we will salvage and tow your vehicle, arrange for hotel accommodation and a rental car. Because it is our objective to help you as quickly, efficiently and

unbureaucratically as possible – round the clock and throughout Europe. This is service BMW-style.

Standard equipment.

Safety	318i	320i	325i
Anti-lock brake system (ABS)	●	●	●
Asbestos-free clutch and brake linings	●	●	●
Brakes:			
– Disc brakes, front and rear	●	●	●
– Inner-vented disc brakes, front		●	●
Bumpers front/rear regenerating fully to their original shape in impacts up to 4 km/h	●	●	●
Central locking with anti-theft security and immobilizer, crash sensor; fuel tank filler flap integrated in central locking, master key with micro-torch, side windows with comfort opening and closing function	●	●	●
Driver airbag	●	●	●
Ergonomic belt system at the rear	●	●	●
Inertia-reel seat belts at the front with belt-latch tensioner and belt retainer	●	●	●
Integral side impact protectors	●	●	●
Parking protection through wrap-around plastic bumpers and side strips	●	●	●
Power steering with safety steering column	●	●	●
Predetermined crumple zones front and rear	●	●	●

Engine			
Closed-loop catalytic converter, heated oxygen sensor, activated carbon filter, controlled tank purge	●	●	●
Cylinder-specific knock control	●	●	●
Digital Motor Electronics (DME)	●	●	●
Four-valve technology		●	●
Hydraulic valve play compensation	●	●	●
Individual-control intake manifold (ICIM)	●		
Straight-four engine	●		
Straight-six engine		●	●
Light-alloy cylinder head	●	●	●
On-board diagnosis	●	●	●
Solid-state distributor system	●	●	●
Valve drive with roller-type rocker arms	●		
Variable camshaft control (VACC)		●	●

Transmission/suspension			
Central arm rear axle with anti-squat, anti-dive and anti-roll bar	●	●	●
Five-speed gearbox with direct transmission in fifth gear	●	●	●
Spring strut front axle with anti-dive and anti-roll bar	●	●	●
Two-mass flywheel (with manual gearbox models)		●	●

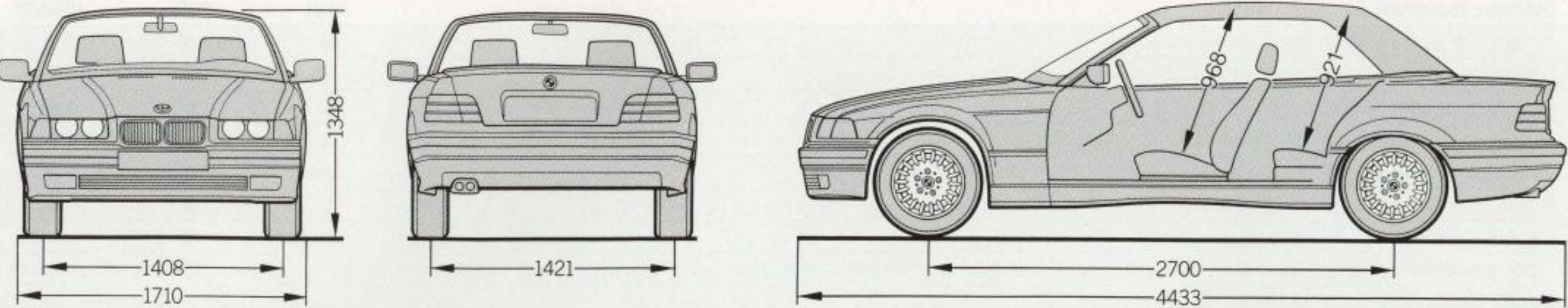
Exterior features			
All-round rustproofing system with hot-galvanising, phosphate coating and cathodic dip bath, preservation of hollow cavities, underfloor protection	●	●	●
Bumpers in body colour at the top, contrasting colour at the bottom	●	●	●
Central, folding-top closing mechanism, one-hand operation	●	●	●
Electrically adjustable rear-view mirrors	●	●	●
Engine compartment and luggage compartment lids supported by gas-pressure springs	●	●	●
Foglamps in tree-form technology			●
Front wheel arches with plastic inserts	●	●	●
Green heat-insulating glass with laminated windscreen	●	●	●
Light-alloy wheels in sports-spoke styling		●	●
Plastic tank, capacity approx 65 ltr	●	●	●
Rear-view mirrors and luggage compartment lid handle strips in body colour	●	●	●
Steel wheels with wheel caps	●		
Triple-layer fabric folding top with roof liner and replaceable plastic rear window, tinted green	●	●	●

Special equipment.

Interior features	318i	320i	325i
Analogue-face clock in the centre console	●	●	
Analogue-face instruments with anti-dazzle illumination	●	●	●
Anti-dazzle interior mirror	●	●	●
Armrests on the doors with integral closing handles	●	●	●
Automatic operation of courtesy lights with soft on/off dimming	●	●	●
BMW tools in a special box in the luggage compartment lid	●	●	●
Centrally operated windows via servo switch	●	●	●
Courtesy light package composed of map-reading lamps at front and illuminated ash-trays at rear		●	●
Digital clock			●
Door cutouts with aluminium embellishment strips			●
Electrically adjustable headlight range control	●	●	●
Electronically controlled heating system independent of road speed, multi-stage radial blower	●	●	●
Electric window lifts front and rear with override switch at front	●	●	●
Front seats automatically move to the front when tilted forwards, front passenger backrest seat may be unlocked and tilted forwards from driver's seat	●	●	●
Fully reclining front seats with fine backrest adjustment, fore-and-aft seat adjustment, driver's and front passenger's seats adjustable for height	●	●	●
Gearshift lever gaiter, hand brake handle and gaiter all finished in leather			●
Headrests at the front, adjustable for hight and angle	●	●	●
Illuminated glove compartment lockable via central locking	●	●	●
Interior carpeting in velour, driver's footrest integrated in side panel	●	●	●
Lashing points in luggage compartment	●	●	●
LIGHTS ON? warning	●	●	●
Luggage compartment capacity 230 ltr (to VDA standard)	●	●	●
Luggage compartment with fabric lining all round	●	●	●
Multi-Information Display with Check/Control (alphanumerical display)			●
Rev counter with Energy Control, fuel gauge, coolant thermometer, LC display for mileage and trip counter	●	●	●
Service Interval Indicator	●	●	●
Side windows at the front automatically move down and up by approx 12 cm when opening and closing doors	●	●	●
Side windows automatically move down approx 38 cm when the folding top is closed	●	●	●
Spare wheel beneath the floor inside luggage compartment	●	●	●
Steering wheel rim and gearshift lever knob in leather	●	●	●
Storage space in the centre console, in the tunnel console and in storage boxes on the front doors; additional storage space with non-smoker package	●	●	●
Steering column adjustment, manual		●	●
Twin-tone horn	●	●	●
Vanity mirror for driver (with slide cover) and front passenger	●	●	●
Warning triangle and first-aid kit in a separate box on the right side of the luggage compartment	●	●	●

The models illustrated in this brochure show the specifications for the German market. In part, they include optional equipment and accessories not fitted as standard. According to the specific requirements of other markets, alterations in models, standard and optional equipment, as described in the text and illustrations, may occur. For precise information on model features and the exact level of equipment, please contact your BMW importer or dealer. Subject to change in design and equipment. © BMW AG, Munich, Germany. Not to be reproduced, wholly or in part, without written permission of BMW AG, Munich.

Specifications.



All measurements in mm.

Weight		318i	320i	325i
Unladen ¹⁾	kg	1430 (1470)	1480 [1515]	1525 [1560]
Max permissible	kg	1755 (1795)	1805 [1840]	1850 [1885]
Permitted load	kg	400	400	400
Permitted axle load front/rear	kg	815/1045	855/1050	890/1060
Permitted trailer load, unbraked	kg	640	670	670
Permitted trailer load, braked,				
max 12 % gradient	kg	1400 (1500)	1500	1500
Permitted trailer load, braked,				
max 8 % gradient	kg	1500/1600 ²⁾	1500/1600 ²⁾	1500/1600 ²⁾

Engine		318i	320i	325i
Cylinders/valves		4/2	6/4	6/4
Capacity	cc	1796	1991	2494
Stroke/bore	mm	81/84	66/80	75/84
Max output	kW/bhp/rpm	85/115/5500	110/150/5900	141/192/5900
Max torque	Nm/lb-ft/rpm	168/124/3900	190/140/4200	245/181/4200
Compression ratio/fuel grade ³⁾	:1/ROM	9.7/95	11.0/95	10.5/95

Transmission		318i	320i	325i
Standard gearbox ratios I/II/III	:1	4.23/2.52/1.66	4.23/2.52/1.66	4.23/2.52/1.66
IV/V/R	:1	1.22/1.00/4.04	1.22/1.00/4.04	1.22/1.00/4.04
Final drive ratio	:1	3.38 (4.45)	3.45 [3.45]	3.15 [3.15]

Performance		318i	320i	325i
Drag coefficient	Cd	0.35	0.35	0.35
Top speed	km/h	194 (189)	211 [207]	229 [225]
Acceleration 0–100 km/h	sec	12.5 (13.7)	10.6 [11.4]	8.6 [9.4]
Standing-start km	sec	33.7 (34.9)	31.6 [32.8]	29.1 [30.3]
Flexibility 80–120 km/h in fourth gear				
(standard gearbox)	sec	12.1	10.7	9.0

Fuel consumption ^{3 4)}		318i	320i	325i
90 km/h	ltr/100 km	5.9 (6.3)	6.7 [6.0]	6.8 [6.2]
120 km/h	ltr/100 km	7.8 (8.0)	8.4 [7.7]	8.3 [7.7]
City traffic	ltr/100 km	10.1 (11.4)	11.4 [12.2]	12.1 [12.5]

Wheels		318i	320i	325i
Tyre dimensions		205/60 R 15 91 H	205/60 R 15 91 V	205/60 R 15 91 V
Wheel dimensions		6 1/2 J x 15	7 J x 15	7 J x 15
Material		Steel	Light-alloy	Light-alloy

Electrical system		318i	320i	325i
Battery capacity	Ah	70	70	70
Alternator output	A/W	70 (80)/980 (1120)	80/1120	80/1120

¹⁾ In line with the EC Norm, the figure quoted includes 68 kg for the driver and 7 kg for luggage. Unladen weight applies to vehicles in standard trim. Special equipment may increase this figure.
²⁾ Figures apply to the follow types of trailer: boat trailers, glider transporters, horse-boxes and car transporters.
³⁾ Engines with knock control are designed for ROM 95 fuel. Use of ROM

98 reduces consumption under normal conditions and increases power accordingly. On ROM 91 fuel, engine power decreases and fuel consumption is higher.
⁴⁾ Fuel consumption with standard gearbox to DIN 70030, Part 1. Figures in () apply to vehicles with 4-speed automatic transmission. Figures in [] apply to vehicles with 5-speed automatic transmission.

Special equipment.

	318i	320i	325i
Active rollover safety system, incl. rear headrests	●	●	●
Aerodynamic package M	●	●	●
Airbag for front passenger	●	●	●
Air-conditioning including microfilter	●	●	●
Anti-theft warning system with remote control (infra-red transmitter)	●	●	●
Armrest at the front	●	●	●
Automatic Stability Control + Traction (ASC + T)		●	●
Automatic transmission:			
– Four-speed EH automatic	●		
– Five-speed EH automatic		●	●
Bumpers in body colour all round	●	●	●
Car telephone, D-net, with hands-free operation	●	●	●
Cassette rack	●	●	●
CD changer	●	●	●
Check/Control		●	
Courtesy light package	●		
Cruise control	●	●	●
Driver's and front passenger's seat electrically heated	●	●	●
Foglamps	●	●	
Folding top, electro-mechanically operated	●	●	●
Foot mats in velour	●	●	●
Hardtop matching body colour	●	●	●
Hardtop preparations package	●	●	●
Headlight washer system	●	●	●
HiFi loudspeaker system	●	●	●
Limited-slip differential with 25 per cent locking action	●	●	●
Lumbar support on driver's and front passenger's seat	●	●	●
Metallic paintwork	●	●	●
Microfilter	●	●	●
Model designation, dropped	●	●	●
Non-smoker package	●	●	●
On-board computer V	●	●	●
Outside temperature display	●	●	●
Park Distance Control (PDC), rear	●	●	●
Radios, large range of	●	●	●
Rear-view mirrors and screen washer nozzles heated	●	●	●
Remote control for central locking (infra-red transmitter)	●	●	●
Seat adjustment, electric, for driver's and front passenger's seat	●	●	●
Ski bag, incl. rear centre armrest	●	●	●
Sports seats	●	●	●
Sports suspension M	●	●	●
Steering column mechanically adjustable	●		
Steering wheel: leather steering wheel with airbag	●	●	●
Steering wheel: leather sports steering wheel with airbag	●	●	●
Steering wheel: M leather steering wheel with airbag	●	●	●
Sunshield windscreen	●	●	●
Towing hook with removable ball joint	●	●	●
Upholstery: fabric/leather combined	●	●	●
Upholstery: individual leather finish	●	●	●
Upholstery: Montana leather	●	●	●
Upgraded power supply	●	●	●
Wheels: light-alloy wheels in classic styling	●	●	●
Wheels: light-alloy wheels in cross-spoke styling	●	●	●
Wheels: light-alloy wheels in sports-spoke styling	●	●	●
Wheels: light-alloy wheels in twin-spoke styling	●	●	●
Windshield	●	●	●
Walnut trimmings, high gloss		●	●

All the options listed above are available fully installed ex works. To meet any further requests you may have, we offer a wide range of BMW accessories – developed by BMW and of BMW quality. Both the accessories as such and their installation are covered by our full ex works warranty. For further information, please contact your BMW dealer who will be glad to offer you helpful advice and a special accessories' brochure.

Exterior colours.

		Standard		
		388 Schwarz	391 Dunkelblau	392 Dunkelgrün
Paintwork	Standard			
	300 Alpinweiss	1	2	
	314 Hellrot	3		
	668 Schwarz	4	5	
	307 Dunkelgrün	6		7
	263 Dunkelblau	8		
Metallic ¹⁾	309 Arktissilber	9	10	
	269 Arktisgrau	11		
	295 Samoablau	12	13	
	288 Moreagrün	14		
	252 Calypsorot	15		
	297 Montrealblau	16	17	
	275 Bostongrün	18		19
	286 Cordobarot	20		
	303 Cosmosschwarz	21	22	
	302 Madeiraviolett	23	24	

Besides the paintwork-hardtop-upholstery combinations listed above, others are available on request.
¹⁾ Optional.

Interior colours.

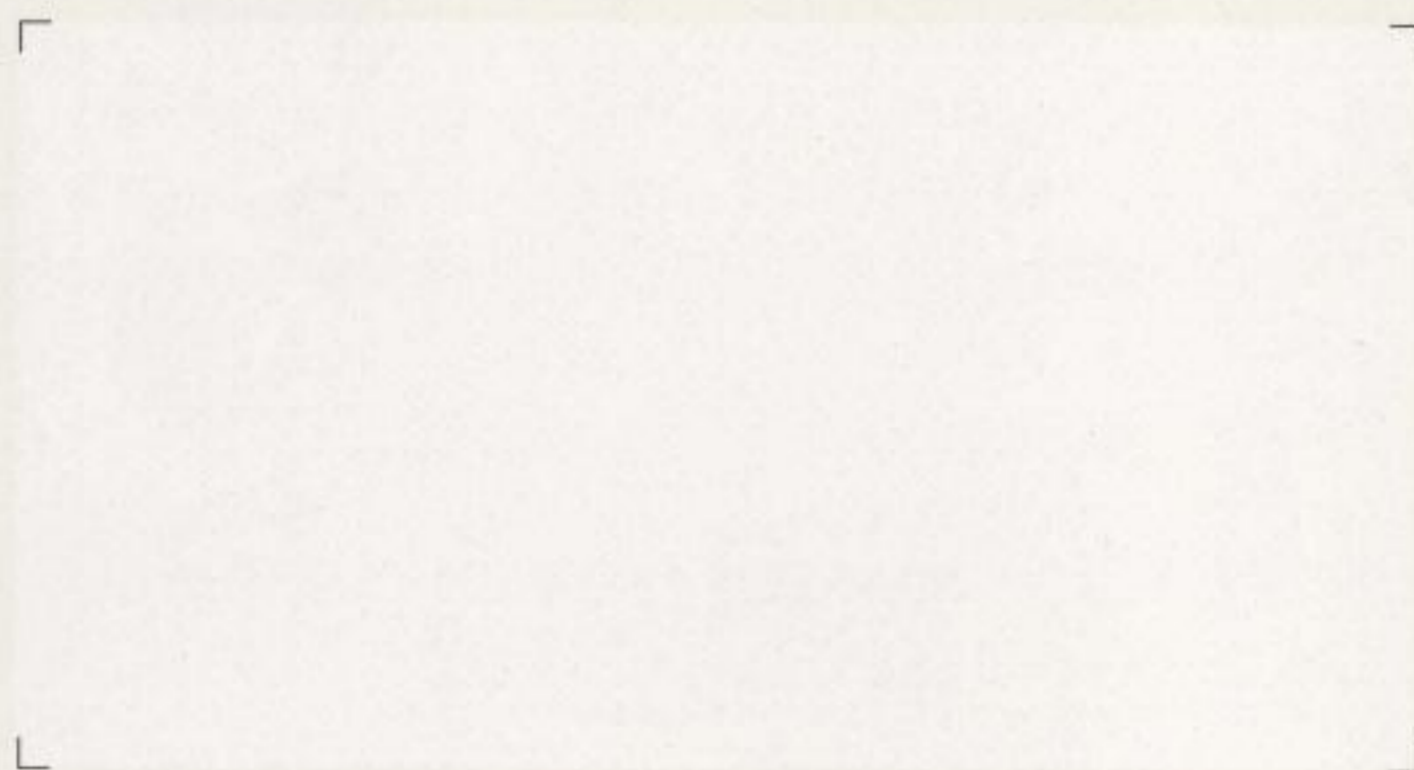
Your exterior-colour combination	Fabric (standard)				Fabric/leather combined			Leather (optional)					
	Anthrazit	Grau	Klassischrot	Türkis	Anthrazit	Klassischrot	Türkis	Blauviolett	Safrangelb	Hellgrau	Schwarz	Beige	Klassischrot
1	●		●	○	●	●	○				●	○	●
2								●					
3	●				●						●		
4	●	●	●	●	●	●	●	●	●	●	●	●	●
5								●					
6	○				○						○		
7	○	○			○				○	○	○	●	
8		●								●			
9	●	●	●	○	●	●	○		○	●	●		●
10								●					
11	●	★	●	○	●	●	○		○	●	●		●
12	●				●			●			●		
13	●				●			★			●		
14	●			★	●		★				●		
15	●	○	★		●	★				○	●	○	★
16	●	○			●			○	○	○	●		
17	○	○			○			○	○	○	○		
18	●				●						●	○	
19	●				●						●	○	
20	●	○			●					○	●	○	
21	●	●	●	●	●	●	●	●	★	●	●	●	●
22								●					
23	●				●						●		
24	●	○			●			★	○	●			

★ Particularly harmonious colour combination.
● Recommended colour combination.
○ Colour combination available.

Materials.

Seat shape	Standard	Optional	
	Standard seat		Standard seat
	Sports seat ¹⁾	Sports seat	Sports seat
Material	Fabric Flat weave	Fabric/leather combined (jacquard design)	Montana leather
			
Interior colours			
Anthrazit			
	D6AT	C1AT	
Grau			
	D6TT		
Beige			
			P8SN P7SN ²⁾
Klassischrot			
	D6GD	C1GD	P7GD ²⁾
Türkis			
	D6TK	C1TK	
Blauviolett			
			P8MA P7MA ²⁾
Safrangelb			
			P8SG P7SG ²⁾
Hellgrau			
			P8TH P7TH ²⁾
Schwarz			
			P8SW P7SW ²⁾

¹⁾ Optional.
²⁾ Order number applies to sports seat.



BMW AG

BMW – the ultimate driving machine