



MINI COOPER.
MINI COOPER S.

BMW AG

Let's forget all our assumptions about cars.
Let's build the world's first street-legal Go-Kart.
Let's sweat the details.
Let's use toggle switches instead of knobs.
Let's air condition the glove box.
Let's reclaim our garages.
Let's sip, not guzzle.
Let's master the asphalt arts.
Let's break routine, but not make a routine of it.

LET'S MOTOR.™





LET'S GLANCE IN THE REARVIEW MIRROR.

The year was 1959. The place was Longbridge, England. As the finishing touches were being put on the first Mini, nobody could've foreseen what was to come. How were they to know that Minis would revolutionize how cars were designed? Or that they'd take home the top honors at the Monte Carlo Rally in 1964, '65 and '67? Or be the first automobile that both royalty and commoners could agree on? Or that 41 years later it would finish second in the 'Car of the Century' balloting, behind only the Ford Model T? As they stood there, as the first Mini rolled off the line, all anyone knew is that they were in the midst of something special. So in case you were wondering, that's where the feeling of déjà vu might be coming from.



LET'S TURN THE ENGINE SIDEWAYS.

The original intent in 1959 was to create more room in the passenger compartment, but as it turned out, putting the engine in sideways also created something of a revolution in car design. The transverse engine must have been a good idea; forty years later, it seems everyone is copying it.

The new MINI keeps this transverse-mounted engine, but raises the ante, performance-wise. The MINI Cooper boasts a 16-valve OHC four-cylinder naturally-aspirated engine that creates 115 horsepower with a top speed of 124 mph (electronically limited).

The MINI Cooper S has at its heart a 163-horsepower, supercharged engine. The supercharger forces more air into the engine resulting in instant power, a marked improvement over the lag associated with turbocharged engines.

(If you're wondering what the "S" in Cooper S stands for, the short answer is, we don't know. Legend has it that it's either "Special" or "Sport", depending on whose story you believe: Sir Alec Issigonis, the visionary creator of the Mini, or John Cooper, the automotive genius who made the Mini rally-ready.)



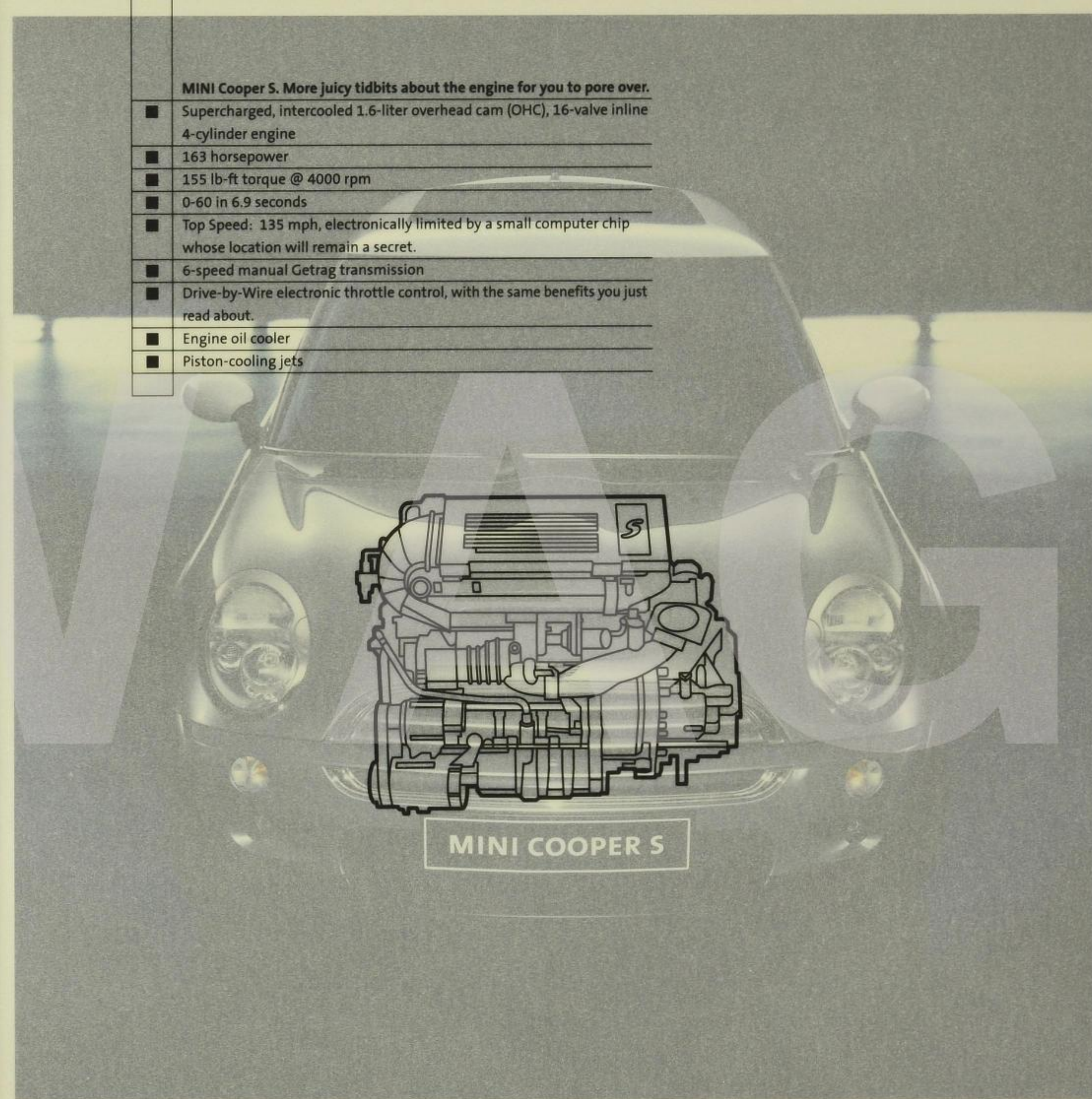
BMW

MINI Cooper. All the juicy tidbits about the engine for you to pore over.

- 1.6-liter overhead cam (OHC), 16-valve inline 4-cylinder engine
- 115 horsepower
- 110 lb-ft of torque @ 4500 rpm
- 0-60 in 8.5 seconds
- Top Speed: 124 mph, electronically limited.
- 5-speed manual transmission or Continuously-Variable (automatic) Transmission (CVT) with lever-mounted 6-speed steptronic mode
- Drive-by-Wire electronic throttle control. Replaces mechanical linkage. Instant power, optimal gas mileage and minimal emissions.

MINI Cooper S. More juicy tidbits about the engine for you to pore over.

- Supercharged, intercooled 1.6-liter overhead cam (OHC), 16-valve inline 4-cylinder engine
- 163 horsepower
- 155 lb-ft torque @ 4000 rpm
- 0-60 in 6.9 seconds
- Top Speed: 135 mph, electronically limited by a small computer chip whose location will remain a secret.
- 6-speed manual Getrag transmission
- Drive-by-Wire electronic throttle control, with the same benefits you just read about.
- Engine oil cooler
- Piston-cooling jets





LET'S ADOPT A TWISTY HIGHWAY.

Bumper to bumper, MINI is the shortest car on the road. But mirror to mirror, it's as wide as a mid-sized family sedan, giving it an aggressive, bulldog-like stance. And just like in the classic Mini, the wheels are pushed out to the furthest edges of each corner, providing a platform of amazing stability – and a phenomenal ability to tackle S-turns and hairpin corners.

The steering is accurate, tight, lightning-quick, electro-hydraulic and power-assisted. Moreover, the steering is not powered by the engine but instead with its own electric motor, resulting in a joyful combination of communication with the road and fuel efficiency, all without sapping engine power.

The multi-link rear suspension maximizes grip and handling. Even over extremely bumpy terrain, your MINI's rear tires stay in full contact with the road. Some say it's excessive to put a high-performance, rear-wheel drive suspension on a front-wheel drive vehicle. We agree. That's why we did it.

Speaking of excess, equal length drive shafts virtually eliminate torque steer – the tendency of front-wheel drive cars to pull to one side during rapid acceleration. Most car companies don't put in the effort to solve the problem of torque steer. That was unacceptable to us.



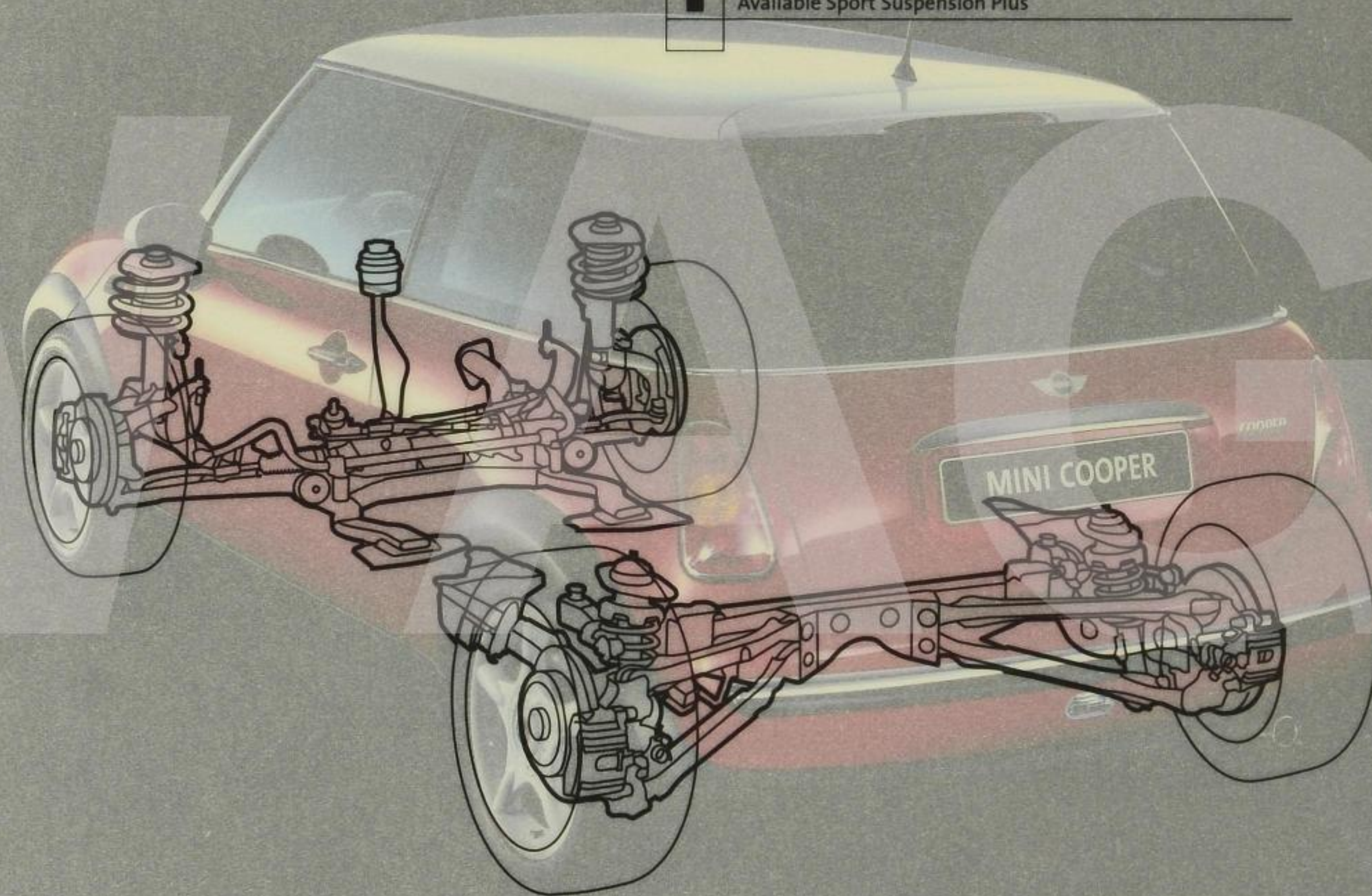
MINI Cooper S. Ride and handling essentials.

- Go-Kart-like handling
- Aggressively wide footprint
- All-Season traction Control (ASC) makes ordinary drivers great and great drivers even better
- Multi-link rear suspension, technology borrowed from rear-wheel drive sportscars
- Torque-steer-squashing equal length drive shafts
- 16" alloy wheels with run-flat all-season tires
- Available 17" alloy wheels with run-flat performance tires
- Electro-hydraulic, engine-speed sensitive power steering
- Available Dynamic Stability Control (DSC)
- Sport Suspension Plus with beefier front and rear anti-roll stabilizer bars for improved turn-in and handling

BMW

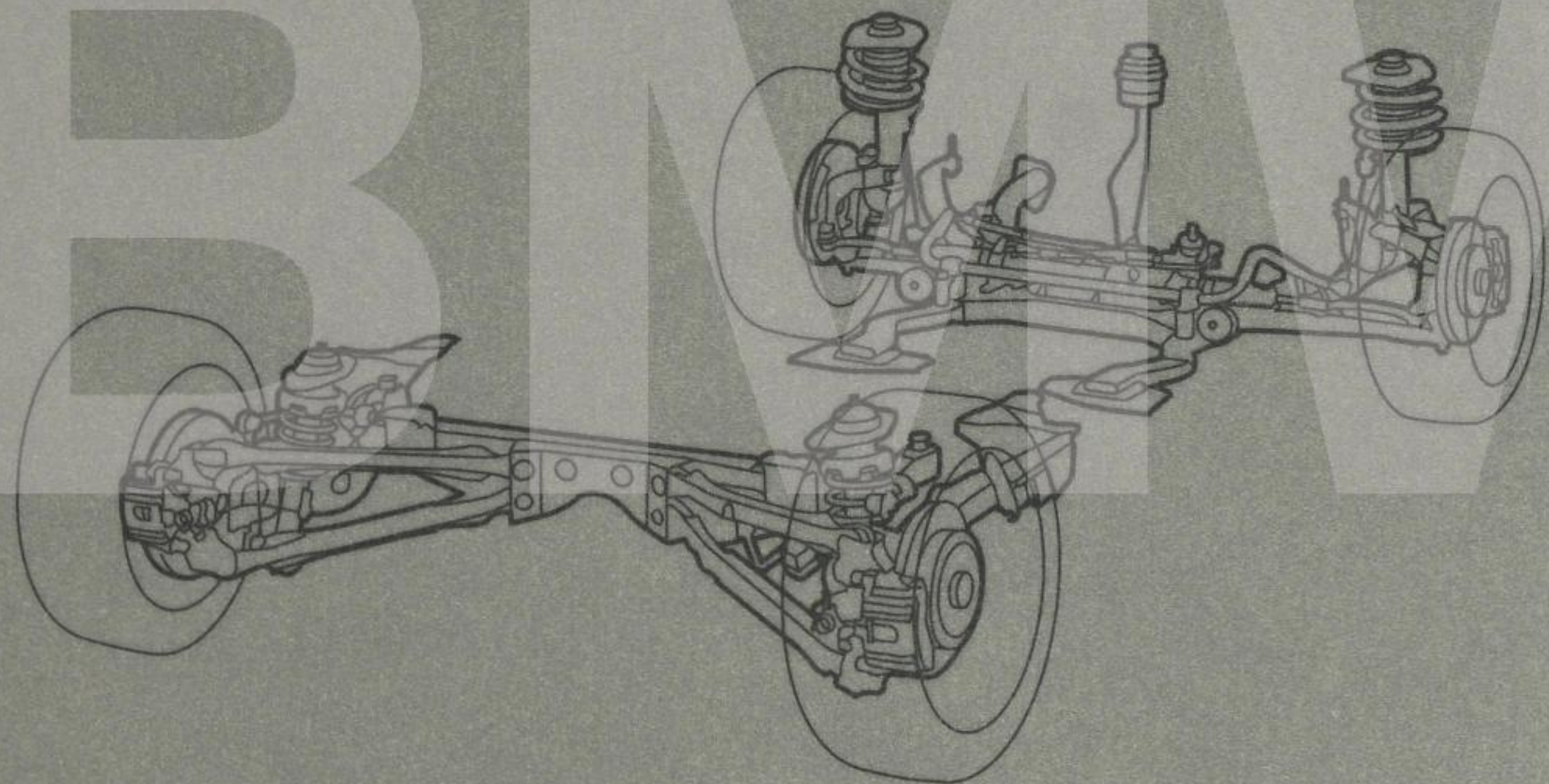
MINI Cooper. Ride and handling essentials.

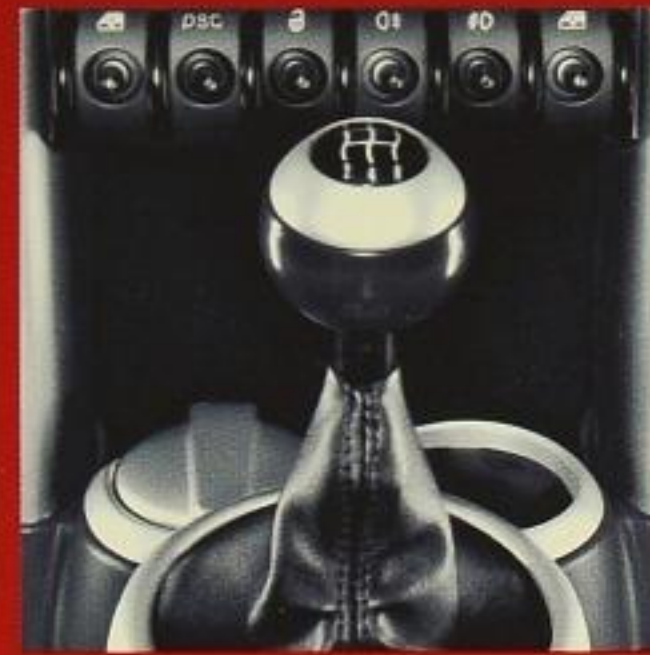
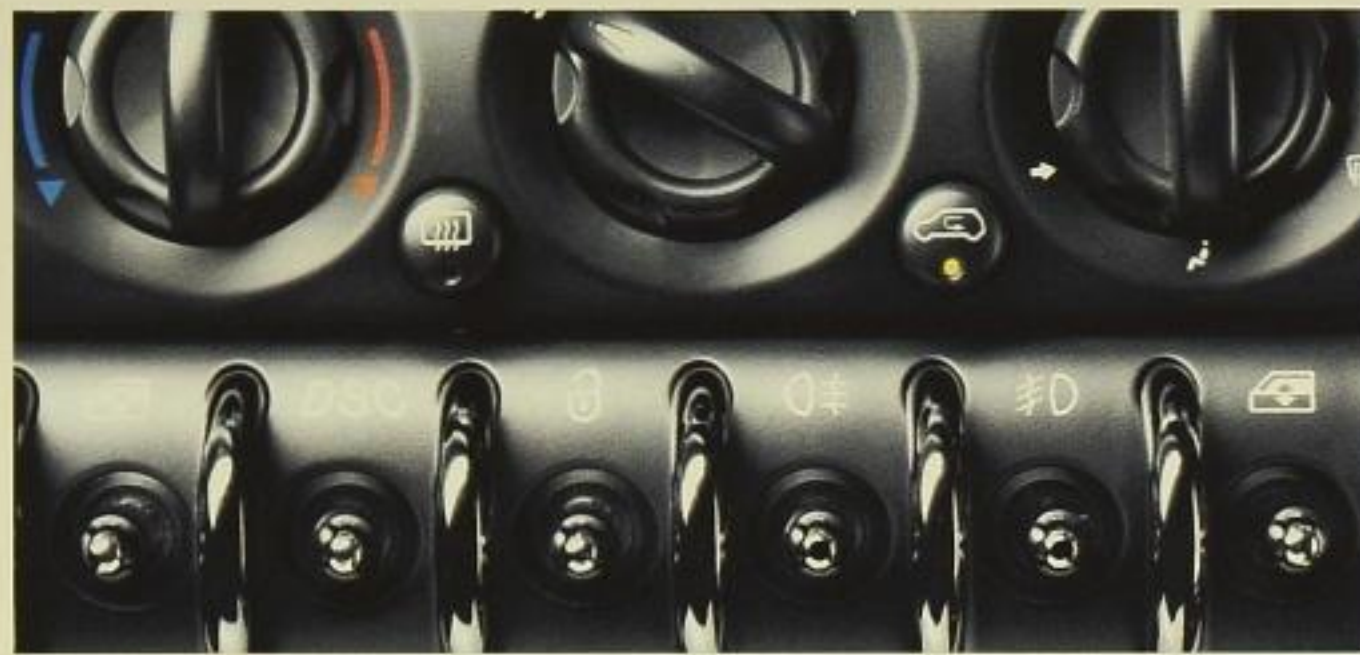
- Go-Kart-like handling
- Aggressively wide footprint
- Multi-link rear suspension
- Equal length drive shafts
- 15" alloy wheels with all-season tires
- Available 16" alloy wheels with run-flat performance tires
- Electro-hydraulic, engine-speed sensitive power steering
- Extremely rigid chassis
- Sport Suspension with front and rear anti-roll stabilizer bars
- Available Sport Suspension Plus



MINI Cooper S. Mid-engine and handling essentials.

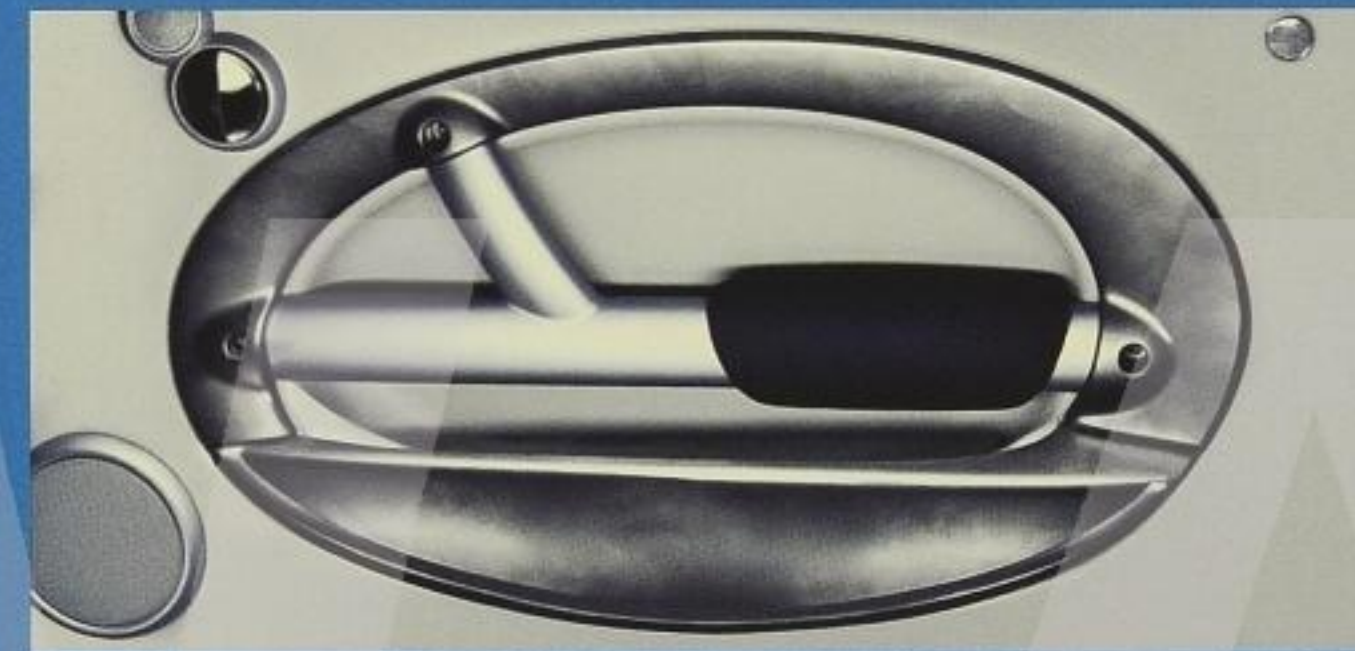
- Go-Kart-like handling
- Aggressively wide footprint
- Multi-link rear suspension
- All-Season traction Control (ASC)
- Equal length drive shafts
- 17" alloy wheels with all-season tires
- Available 16" alloy wheels with run-flat performance tires
- Electro-hydraulic engine speed sensitive steering
- Extremely rigid chassis
- 16" alloy wheels with run-flat all-season tires
- Sport Suspension Plus with beefier front and rear anti-roll stabilizer bars
- Available Dynamic Stability Control (DSC)
- Sport Suspension Plus with beefier front and rear anti-roll stabilizer bars for improved turn-in and handling





LET'S SIT IN THE MINI COOPER.

Note the spaciousness. There's room for someone who's 6' 7" behind the wheel. And there's room for a 36" widescreen TV in back. Note the speedometer, purposefully placed in the middle of the dashboard -- a direct link to the rally-days of the 1960's. The steering-column-mounted tachometer is likewise a nod to our racing heritage. As is the row of toggle switches controlling the windows, lights, door locks and other top-secret stuff. A CD player, leatherette upholstery, split fold down rear seats, air conditioning and an air-conditioned glove box are all standard amenities.

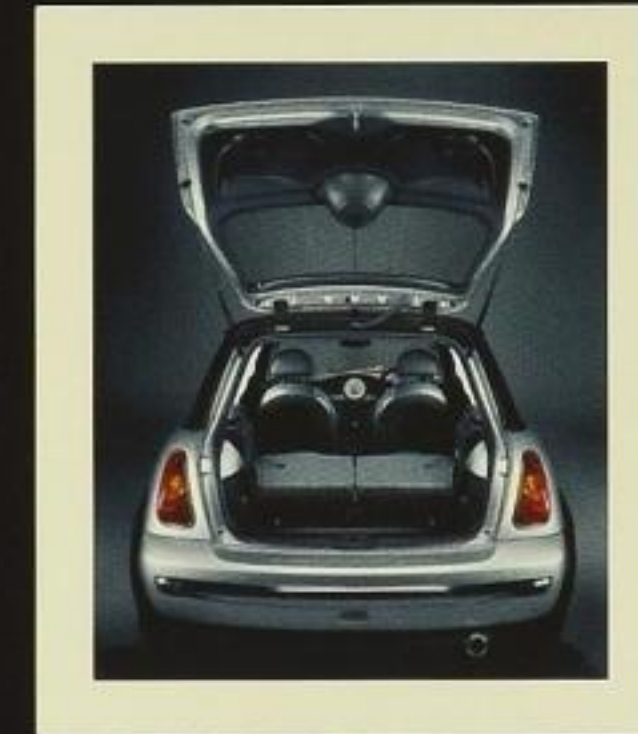
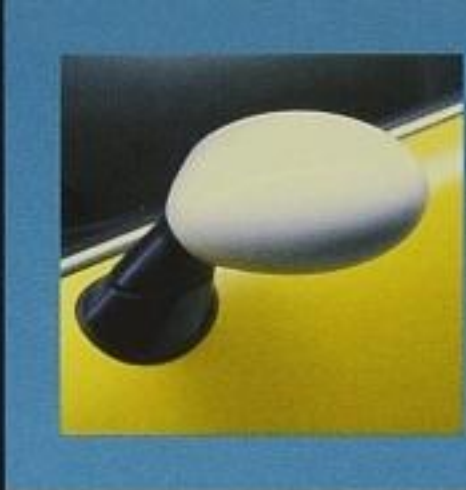


LET'S SIT IN THE MINI COOPER S.

The sport seats have high bolsters to secure the driver in snugly. The tachometer is located front and center. The Getrag six-speed gearshift knob is wrapped in chrome and leather. The available leather-wrapped multi-function steering wheel with finger-activated radio controls let you keep your eyes planted on the road. And through the windshield, you can see an air intake on the bonnet, flanked by available rally stripes. What exactly are we trying to tell you here?



STANDARDS AND OPTIONS.



	MINI Cooper	MINI Cooper S		MINI Cooper	MINI Cooper S
PERFORMANCE			EXTERIOR		
1.6-liter overhead cam (OHC), 16-valve inline 4-cylinder engine (115 hp)	■		15" alloy wheels, 175/65R-15 all-season tires (7-Hole design)	■	
Supercharged, intercooled 1.6-liter overhead cam (OHC), 16-valve inline 4-cylinder engine (163 hp)		■	15" alloy wheels, 175/65R-15 all-season tires (8-Spoke design)	■	
Drive-by-Wire – Electronic throttle control	■	■	16" alloy wheels, 195/55R-16 run-flat performance tires (5-Star design)	■	
5-speed manual transmission	■		16" alloy wheels, 195/55R-16 run-flat all-season tires (V-Spoke design)		■
6-speed manual Getrag transmission		■	17" alloy wheels, 205/45R-17 run-flat all-season tires (S-Lite design)		■
Continuously-Variable (automatic) Transmission (CVT) with 6-speed steptronic mode	■		Alloy wheels – all available in white	■	■
HANDLING, RIDE AND BRAKING			Space saver wheel and tire	■	
MacPherson strut front suspension	■	■	Headlight auto-leveling	■	■
Equal length drive shafts	■	■	Xenon headlights with retractable, high-intensity power wash	■	■
Multi-link rear suspension	■	■	Foglights (halogen free-form)	■	■
Electro-hydraulic, engine-speed-sensitive, power steering	■	■	Chrome line bumpers	■	
4-wheel anti-lock disc brakes (front vented/rear solid)	■	■	Chrome grill	■	
Traction Control		■	Body-colored bumpers	■	
Dynamic Stability Control (DSC) w/traction control	■	■	Body-colored grill		■
Sport Suspension w/front and rear anti-roll (stabilizer) bars	■		Body-colored sport bumpers		■
Sport Suspension Plus w/stiffer front and rear anti-roll (stabilizer) bars	■	■	Body-colored roof and black mirror caps	■	■
			Contrasting roof and mirror caps (available black or white)	■	■
			Rear spoiler	■	■
			Bonnet stripes (white or black)		■
			Center-mounted twin tailpipes		■
			Metallic paint	■	■

- Standard on Cooper
- Optional on Cooper
- Standard on Cooper S
- Optional on Cooper S
- Available at no extra charge

	MINI Cooper	MINI Cooper S		MINI Cooper	MINI Cooper S
INTERIOR SEATING AND TRIM			AUDIO SYSTEM		
6-way adjustable seats (manual) w/driver and passenger height adjustment	■		Silver trim	■	
6-way adjustable sport seats (manual) w/driver and passenger height adjustment	■	■	Alloy Patina trim		■
2-way adjustable lumbar support for front seats, leather seats only (manual)	■	■	Faux wood trim	■	■
Height adjustable headrests	■	■	INSTRUMENTATION AND CONTROLS		
Seatback easy-entry feature	■	■	Anti-theft CD audio system with AM/FM radio, 6 speakers, presets and pre-wired for 6-disc CD changer	■	■
Power exterior mirror control	■	■	Harman Kardon CD audio system with 8 upgraded speakers, upgraded amplification, vehicle-speed-sensitive equalization, digital sound processing and driver-acoustic setting	■	■
Xenon interior lighting	■	■	Center-mounted speedometer		
Leatherette upholstery	■	■	Steering column-mounted tachometer	■	■
Cloth upholstery	■	■	Service interval indicator with miles-to-service readout	■	■
Leather upholstery with leather steering wheel and gear shift knob	■	■	Check control vehicle monitor system with pictogram display	■	■
2-stage heated front seats	■	■	On-board computer indicating average fuel/speed, outside temperature, trip computer and range	■	■
2-spoke steering wheel	■		On-board navigation system with 16:9 screen with integrated on-board computer (speedometer moves to steering column)	■	■
2-spoke leather steering wheel	■	■			
2-spoke wood steering wheel	■	■			
2-spoke multi-function steering wheel with fingertip cruise and audio controls (wood or leather)	■	■			
Tilt steering wheel column	■	■			



	MINI Cooper	MINI Cooper S
COMFORT AND CONVENIENCE		
Remote entry, including 2-step unlocking and remote trunk release	■	■
Air conditioning with microfilter and air-recirculation	■	■
Automatic air conditioning with carbon microfilter and air-recirculation	□	□
Climate controlled glovebox	■	■
Park Distance Control – rear	□	□
Speed-sensitive intermittent windshield wipers	■	■
Rear windshield wiper	■	■
Rain-sensing windshield wipers with auto-dimming rear-view mirror	□	□
Power windows with “one-touch” down operation	■	■
Dual-pane panoramic power sunroof	□	□
Cruise control (with multi-function steering wheel)	□	□
Map-reading and footwell lights	■	■
Split fold down rear seats for expandable cargo space	■	■
3 cupholders – 2 front/1 rear	■	■
Dual sun visors with vanity mirrors	■	■
Digital clock	■	■
SAFETY AND SECURITY		
Anti-lock Braking System (ABS)	■	■
Corner Brake Control (CBC)	■	■
Electronic Brakeforce Distribution (EBD)	■	■
Flat Tire Monitor	■	■
Driver and front passenger airbags – Supplemental Restraint System (SRS) with “smart” dual-threshold, dual-stage deployment and sensor to help prevent unnecessary passenger airbag deployment	■	■
Driver and front passenger seat-mounted, side-impact airbags	■	■
Advanced Head Protection System II (AHPS II)	■	■
Side-impact door beams with interlocking anchoring system	■	■
Battery Safety Terminal – disconnects in the event of a collision	■	■
Automatic fuel cut-off, triggered by airbag deployment	■	■
Central locking system with center toggle switch and 2-step unlocking	■	■
Engine Immobilizer with Coded Driveaway Protection	■	■
Height-adjustable front safety belts with automatic pretensioners and force limiters	■	■
ISOFIX child restraint seat anchorages	■	■
Crash sensor – automatically turns on hazard lights, interior lights, and unlocks doors	■	■
Daytime running lights – programmed by MINI dealer	■	■

PACKAGES.

	MINI Cooper	MINI Cooper S
COMBO #1 – PREMIUM		
Multi-function steering wheel with cruise and audio controls	■	■
Dual-pane panoramic power sunroof	■	■
Automatic air-conditioning with microfilter and air-recirculation	■	■
On-board computer	■	■
COMBO #2 – SPORT		
Dynamic Stability Control (DSC)	■	■
Sport seats	■	■
Front fog lamps	■	■
Rear spoiler	■	■
16" alloy wheels, 195/55R-16 run-flat performance tires (5-Star design)	■	■
17" alloy wheels, 205/45R-17 run-flat performance tires (S-Lite design)		■
Bonnet stripes – white or black		■
Xenon headlights with retractable, high-intensity power wash		■
COMBO #3 – COLD WEATHER		
Heated washer jets	■	■
Heated mirrors	■	■
Heated windshield	■	■
Rain-sensing windshield wipers	■	■
Auto-dimming rear view mirror	■	■
Heated front seats	■	■



COOPER STANDARD
15" 7-Hole alloy wheels
All Season Tires:
175/65 R15 (5.5 J x 15)

COOPER OPTIONAL
15" 8-Spoke alloy wheels
All Season Tires:
175/65 R15 (5.5 J x 15)

COOPER OPTIONAL
COOPER S OPTIONAL
16" 5-Star alloy wheels
All Season Run-Flat Tires:
195/55 R16 (6.5 J x 16)

COOPER S STANDARD
16" V-Spoke alloy wheels
All Season Run-Flat Tires:
195/55 R16 (6.5 J x 16)

COOPER S OPTIONAL
17" S-Lite alloy wheels
Performance Run-Flat Tires:
205/45 R17 (7J x 17)

MINI Cooper – Exterior features	
■	15" or available 16" silver alloy or white wheels
■	Chrome grill
■	Eight available colors including British Racing Green
■	Contrasting roof (available in black or white). Because John Cooper thought a white roof made the car easier to spot in a crowded, dusty rally race.
■	Contrasting mirror caps, white or black
■	Available Xenon headlamps. Filled with inert gas, twice as bright as halogen bulbs, auto-leveling.
■	Available dual pane sunroof. Covers 60 % of the roof area without compromising body rigidity.
■	Wraparound greenhouse glass. Borrowed from modern building design. Glass wraps around the rear pillars. No unsightly seams, just beautiful panoramic views.
■	Beer can-inspired rear exhaust.
■	Third door opens high enough for a six-footer to walk underneath.

MINI Cooper S – Exterior features	
■	16" or available 17" silver alloy or white wheels
■	Body-colored grill
■	Eight available colors including two specific to the Cooper S: Electric Blue and Dark Silver
■	Contrasting roof and mirror caps
■	Race-inspired chrome-plated fuel filler cover, not your average flippy-door-thingy
■	Rear spoiler turns ordinary wind into a powerful downforce
■	Centrally-located chrome-plated twin tailpipes
■	Bonnet scoop. A great big hood nostril that force feeds air into the engine.
■	Available rally stripes.
■	Not-so-subtle red metallic "S" attached to back hatch.
■	Available front foglights

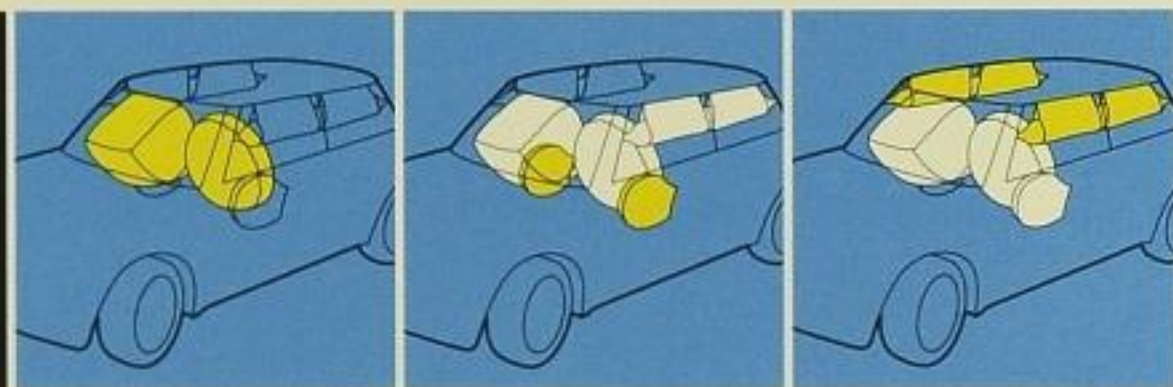


MINI Cooper S. Electric Blue metallic.

MINI Cooper – Exterior features		MINI Cooper S – Exterior features	
■	15" or available 16" silver alloy or white wheels	■	18" or available 17" silver alloy or white wheels
■	Chrome grill	■	Body-colored grill
■	Eight available colors including Silver and Dark Silver	■	Eight available colors including two specific to the Cooper S: Electric Blue and Dark Silver
■	Contrasting roof (available in black or white). Because John Cooper thought a white cap was a little too obvious, he had the roof made the car easier to spot in traffic.	■	Contrasting roof and mirror caps
■	Contrasting mirror caps, white or black	■	Race-inspired chrome-plated fuel filler cover, not your average filler cover
■	Available Xenon headlights. Filled with inert gas, twice as bright as halogen, and auto-leveling.	■	Centrally-located chrome-plated fog lights
■	Available dual pane sunroof. Covers 60 % of the roof area without compromising body rigidity.	■	Bonnet scoop. A great big hood nostril that force feeds air into the engine.
■	Wraparound greenhouse glass. Borrowed from modern buildings, it wraps around the rear pillars. No unsightly seams, just beautiful panoramic views.	■	Available front foglights
■	Beer can-inspired rear exhaust.		
■	Third door opens high enough for a six-footer to walk underneath.		



MINI Cooper S. Electric Blue metallic.



LET'S BE SMART.

Both MINI Cooper and MINI Cooper S contain six airbags. Two up front use smart technology to sense the severity of a crash, passenger position and seatbelt use in order to determine how forcefully to inflate. Two side impact airbags are integrated into the seats, so protection is there regardless of where the seat is positioned. And two more drop down from the headliner to protect front and rear passengers. We could go on, but our safety story is too extensive to explain here. For details, turn the page.

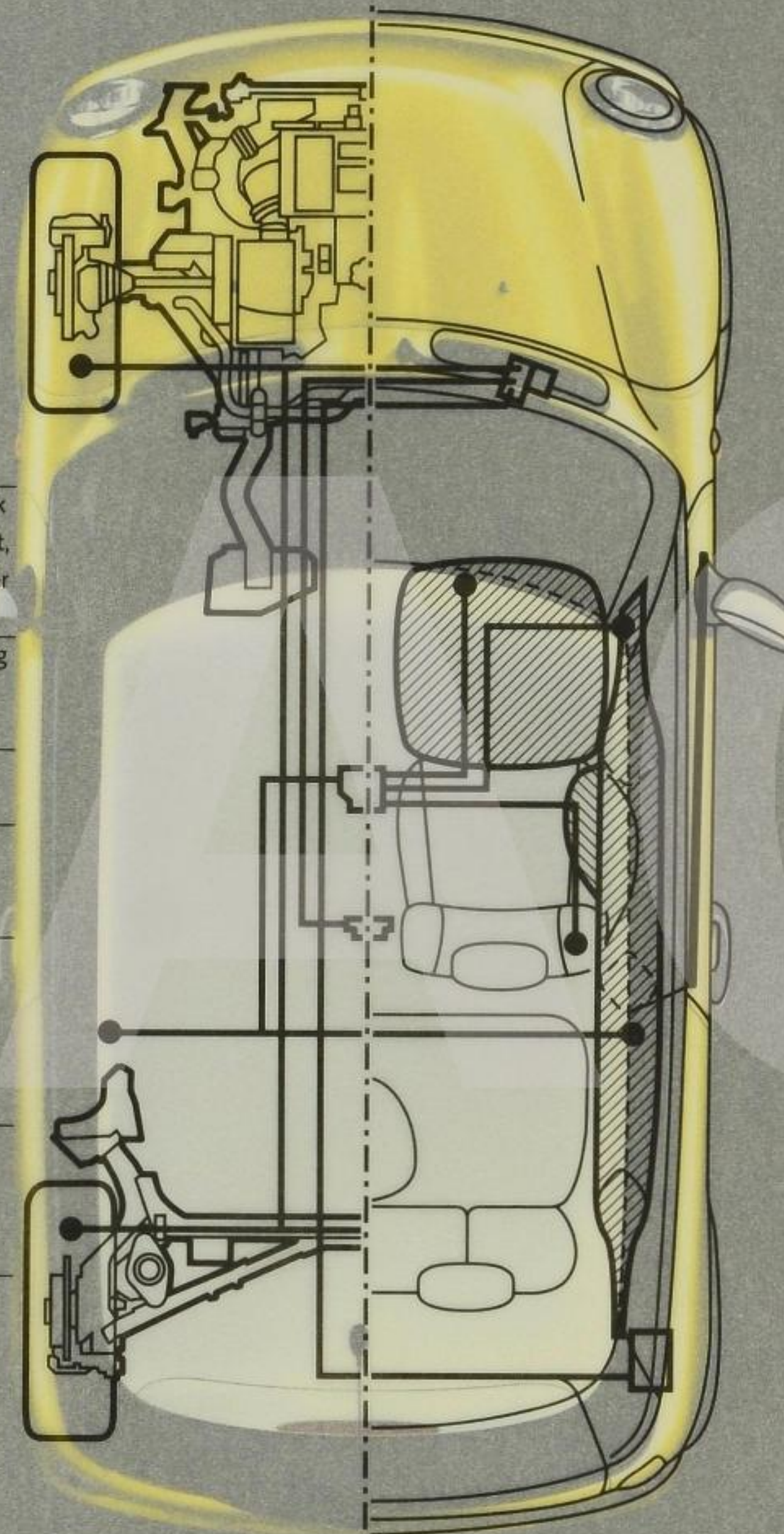


	MINI Cooper and MINI Cooper S Passive Safety Features.
■	Six standard airbags
■	Smart technology. Knows where the impact came from, the severity, knows who was wearing a seatbelt, knows how fast you were going. Bottom line: knows which airbags need to inflate, when they need to inflate and how much they need to inflate.
■	Advanced Head Protection System (AHPSII). Two airbags that are technically not airbags. Call them sausages. They extend from A-pillar to C-Pillar on both sides of the car. They inflate to protect all passengers' heads and stay inflated longer than conventional airbags to keep protecting in the event of multiple impacts.
■	Side airbags installed inside seats. When you adjust the seat position, protection moves with you.
■	Massive side-impact door beams are massive and protect against side impact.
■	Engine designed to break away from its mounts in a head-on collision. Gives up its own life to help protect the legs of the driver and front passenger.
■	Advanced crumple zones in the front and rear re-channel forces around the passenger compartment rather than through it.
■	In the event of a collision: battery terminal disconnects automatically. Fuel flow is cut off. Hazard lights come on. Interior lights come on. All doors unlock.
■	Height-adjustable, pretensioned safety belts.
■	Available run-flat tires. Drive up to 80 miles at 50 mph on a "flat" tire.

W

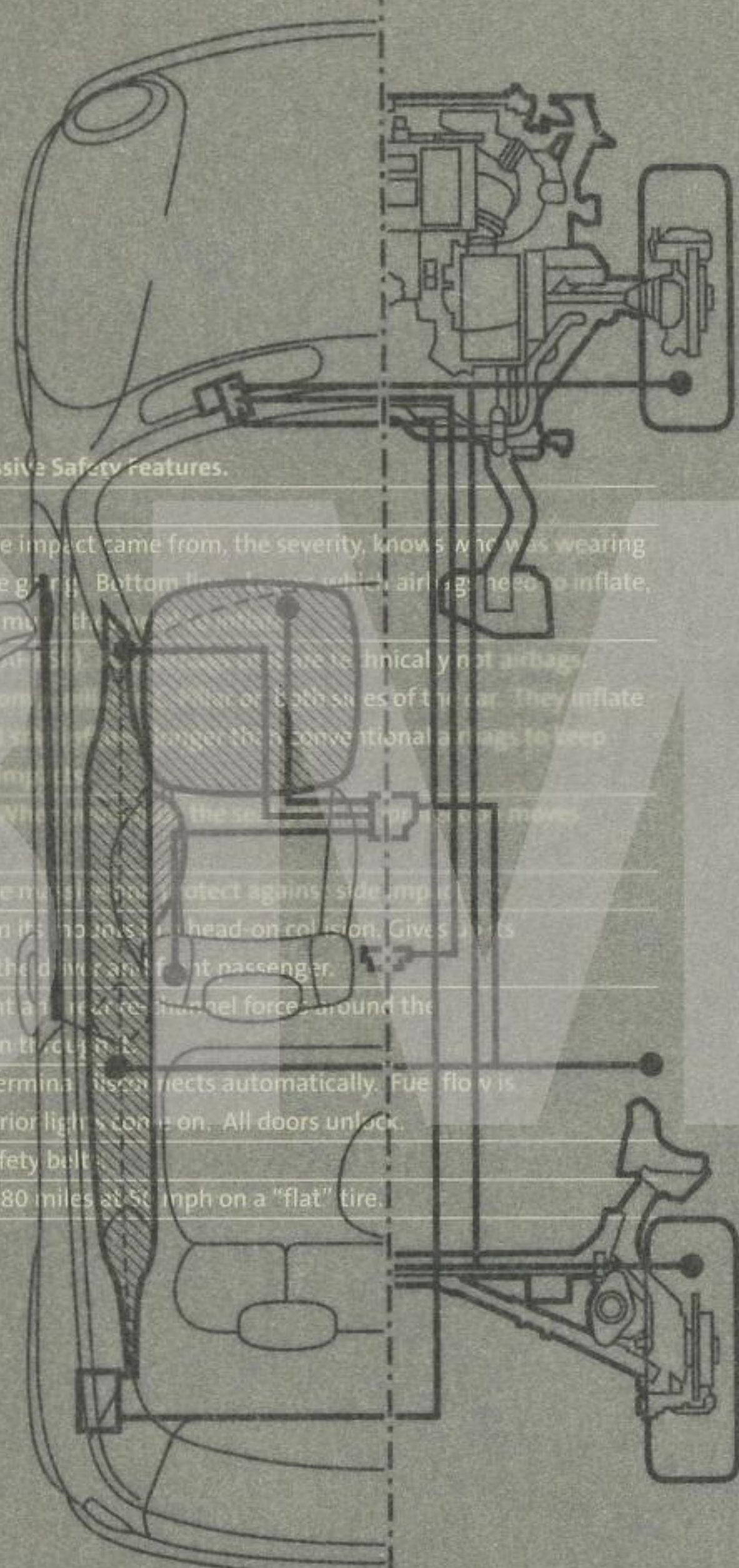
MINI Cooper and MINI Cooper S Active Safety Features. Stuff that keeps you from having to use the stuff on the other page.

- Latest generation 4-channel Anti-lock Braking System (ABS). Vented in front, solid in back. Brake surface area is larger than the original Mini's entire wheel.
- High-tech CBC, EBD and DSC braking systems. You'll read about these on the next page.
- Central locking system with center toggle and two-stage locking.
- Programmable daytime running lights. You get to choose whether they come on.
- Electronic engine immobilizer with Coded Driveaway Protection. A new code is created every time you start the car, making hotwire theft a near impossibility.
- Flat tire monitor. Alerts the driver the moment a tire's revolution rate changes, indicating tire integrity has been compromised.



MINI Cooper and MINI Cooper S Passive Safety Features.

- Six standard airbags
- Smart technology. Knows where the impact came from, the severity, knows who was wearing a seatbelt, knows how fast you were going. Bottom line: knows which airbags need to inflate, when they need to inflate and how much they need to inflate.
- Advanced Head Protection System (AHPS). These are technically not airbags. Call them sausages. They extend from the sides of the car. They inflate to protect all passengers' heads and shoulders, longer than conventional airbags to keep protecting in the event of multiple impacts.
- Side airbags installed inside seats. When the car is hit from the side, the airbags move with you.
- Massive side-impact door beams are now stronger to protect against side impact.
- Engine designed to break away from the chassis in head-on collision. Gives the car's own life to help protect the legs of the driver and front passenger.
- Advanced crumple zones in the front and rear channel force around the passenger compartment rather than through it.
- In the event of a collision: battery terminal disconnects automatically. Fuel flow is cut off. Hazard lights come on. Interior lights come on. All doors unlock.
- Height-adjustable, pretensioned safety belt.
- Available run-flat tires. Drive up to 80 miles at 50 mph on a "flat" tire.



MINI Cooper and MINI Cooper S Active Safety Features. Stuff that keeps you from having to use the stuff on the other page.

- Latest generation 4-channel Anti-lock Braking System (ABS). Ventilated in front, solid in back. Brake surface area is larger than the original Mini's entire wheel.
- High-tech CBC, EBD and DSC braking systems. You'll read about these on the next page.
- Central locking system with center toggle and two-stage locking.
- Programmable daytime running lights. You get to choose whether they come on.
- Electronic engine immobilizer with Coded Driveway Protection. A new code is created every time you start the car, making hotwire theft a near impossibility.
- Flat tire monitor. Alerts the driver the moment a tire's revolution rate changes, indicating tire integrity has been compromised.





LET'S LEARN OUR ABC'S, ABS'S, EBD'S, CBC'S AND DSC'S.

MINI Cooper and MINI Cooper S come standard with latest-generation 4-channel Anti-Lock Braking System (ABS). Additionally, each MINI comes with Electronic Brakeforce Distribution (EBD) and Corner Brake Control (CBC). EBD reads your MINI's load conditions and helps distribute brake force to stabilize your MINI from front to back and prevent nose dives. CBC evens out the braking effect from side to side, especially valuable when applying the brakes in the middle of a tight corner. Finally, optional Dynamic Stability Control (DSC) vigilantly monitors steering angle, yaw and lateral acceleration. If it senses your MINI is moving in a direction other than what you intended, it applies the brakes at individual wheels and manipulates engine torque to put you back on the right path.



MINI Cooper S. Electric Blue metallic.



LET'S USE OUR IMAGINATION.

How great cars are created is something of a mystery. If it were a matter of just science or engineering or technology, then it would be easy. Every car maker would do it every time. But it's not science, it's art. The MINI design team insisted that traditional clay modeling be used instead of computers during the early phases of design. Why? Because they wanted to create a modern car without sacrificing the spirit of the classic Mini. The smile-generating machine. That look of a bulldog pulling at its leash. The curves that are almost human. In short, all the things a computer could never understand.

EXTERIOR COLORS.

SOLID COLORS.



JET BLACK



CHILI RED



LIQUID YELLOW

METALLIC COLORS.



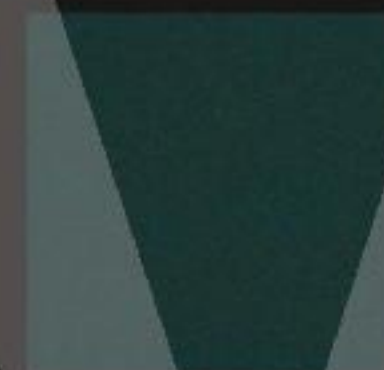
COSMOS BLACK



DARK SILVER



PURE SILVER



BRITISH RACING GREEN



SILK GREEN



ELECTRIC BLUE



INDI BLUE

ROOF COLORS.



BLACK



WHITE

THAT ISN'T IT!

There are even more colors to come.
Check our website MINIUSA.com for the latest.

MOTOR ON.



LET'S MESS WITH PERFECTION

Rally-stripe it. Fender-flare it. Chrome-trim it. Mud-flap it. Rooftop-flag it. Dashboard-hula-girl it. From the very beginning, owning a MINI has been all about embracing customization. So challenge your creativity. Make your MINI uniquely yours. Your dealer can give you some pretty wild ideas about vehicle accessories and MotoringGear.

Warranty

At MINI, our commitment to quality and customer satisfaction is clearly demonstrated by a 4-year/50,000-mile New Vehicle Limited Warranty, and a 6-year/unlimited-mileage warranty against rust and corrosion perforation.

Full scheduled maintenance is standard

MINI also wants to ensure the proper performance of your vehicle, so we offer Full Maintenance as standard for 3 years/36,000 miles.

Roadside Assistance Program

The MINI owner experience continues out on the road. You are only a toll-free phone call away. MINI's Roadside Assistance Program is available 24-hours a day, anywhere in the U.S., Canada and Puerto Rico. The program offers towing, lock-out service, on-site assistance and even custom computerized trip routing services. And for a nominal fee, the MINI Service Card extends this service after the New Vehicle Limited Warranty for as long as you wish.

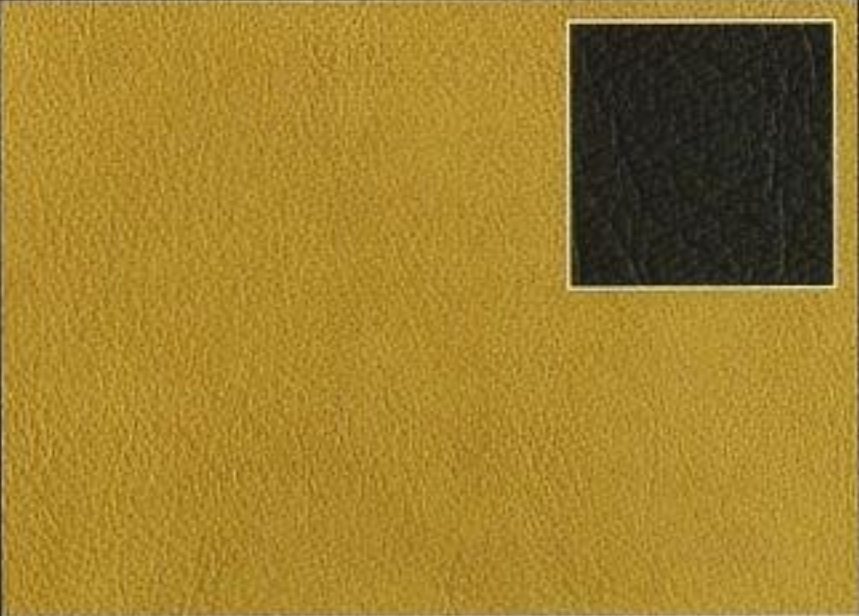
UPHOLSTERY.



LEATHERETTE
PANTHER BLACK / PANTHER BLACK
INTERIOR: PANTHER BLACK/SILVER GREY



PROFILE LEATHER*
PANTHER BLACK / PANTHER BLACK
INTERIOR: PANTHER BLACK



SOFT LEATHER*
CORDOBA BEIGE / PANTHER BLACK
INTERIOR: CORDOBA BEIGE



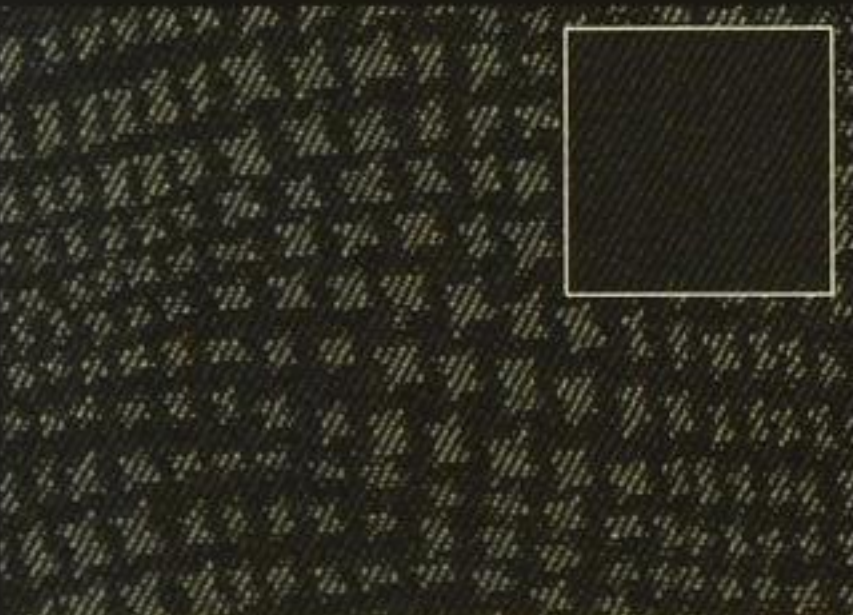
NATURAL LEATHER*
EMERALD GREEN / PANTHER BLACK
INTERIOR: EMERALD GREEN



GRAVITY LEATHER**
LAPIS BLUE / PANTHER BLACK
INT.: PANTHER BLACK/MAGNESIUM GREY



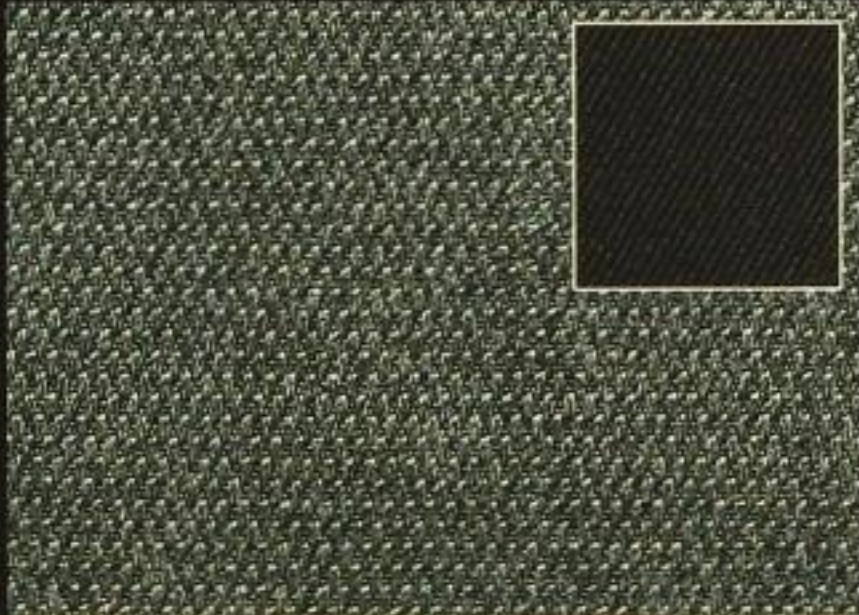
GRAVITY LEATHER**
PANTHER BLACK / PANTHER BLACK
INT.: PANTHER BLACK/MAGNESIUM GREY



KALEIDO CLOTH*
PANTHER BLACK / PANTHER BLACK
INTERIOR: PANTHER BLACK/SILVER GREY



KALEIDO CLOTH*
TARTAN RED / PANTHER BLACK
INTERIOR: TARTAN RED



SPACE CLOTH**
DARK GREY / PANTHER BLACK
INT.: PANTHER BLACK/MAGNESIUM GREY

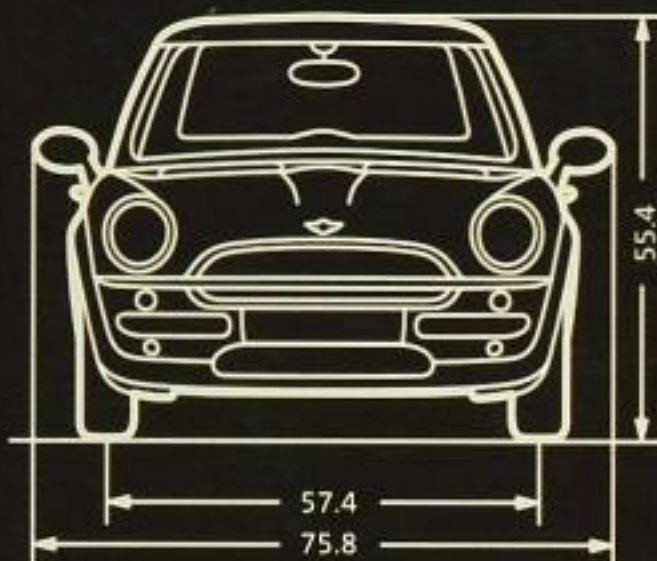
*COOPER ONLY
**COOPER S ONLY

SPECIFICATIONS.

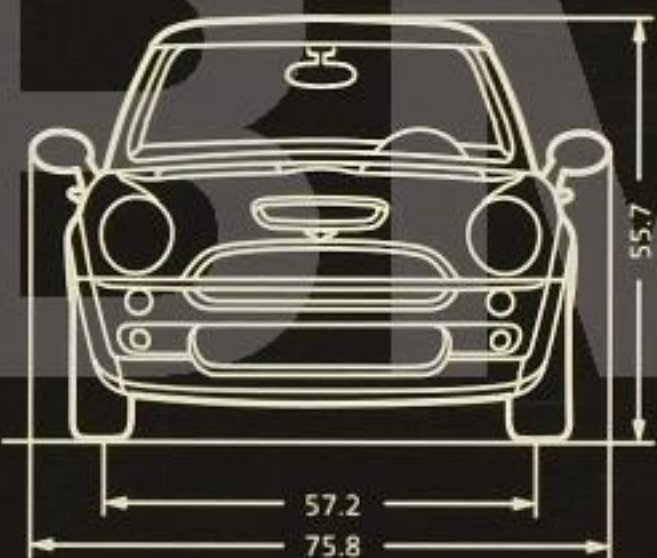
		MINI Cooper	MINI Cooper S
WEIGHT			
Unladen weight	lbs	2315 (2369 CVT)	2513
Weight distribution, front/rear		63/37	63/37
Manual transmission	%	63/37	n/a
Automatic transmission	%		
ENGINE			
Liters/type		1.6/transverse 4-cyl.	supercharged 1.6/ transverse 4-cyl.
Bore/stroke	inch	3.03/3.38	3.03/3.38
Max. Horsepower	hp/rpm	115/6000	163/6000
Max. torque	lb-ft/rpm	110/4500	155/4000
Compression ratio	:1	10.6:1	8.3:1
Fuel grade		Unleaded (premium recommended)	Unleaded (premium recommended)
TRANSMISSION			
Gear ratios		5-speed manual	6-speed manual
I/II	:1	3.42:1/1.95:1	11.43:1/7.18:1
III/IV	:1	1.33:1/1.04:1	5.40:1/4.41:1
V/VI	:1	.85:1	3.66:1/2.97:1
Final drive ratio	:1	3.94:1	n/a
R	:1	3.58:1	11.13:1
PERFORMANCE			
Drag coefficient	C _d	.35	.36
Top speed	mph	124	135
Acceleration 0–60	sec	8.5	6.9
TIRES, WHEELS AND BRAKES			
Tire dimensions		175/65R-15 All-season	195/55R-16 All-season
Wheel dimensions		5.5 x 15	6.5 x 16
Material		Alloy	Alloy
Brake dimensions (diameter)			
Front – vented	inch	10.9	10.9
Rear – solid	inch	10.2	10.2

MINI. LET'S MOTOR.™

MINI COOPER.



MINI COOPER S.



© 2002 MINI, a division of BMW NA, LLC. MINI Cooper and MINI Cooper S available early 2002. All illustrations and specifications are based on the latest product information. MINI reserves the right to make changes without notice. The model year designation on any particular model may be longer or shorter than 12 months. Some vehicles pictured may contain non-US. and/or optional equipment.

See your authorized MINI dealer for complete terms and conditions on Warranty and Full Maintenance. Full Maintenance covers all factory-recommended maintenance, as determined by the service interval indicator for 3 years or 36,000 miles, whichever comes first.

1 11 050 150 25 (S) 2 2001 GM.
Printed in Germany 2001 BRO 02-01