



MINI COOPER. MINI COOPER S.



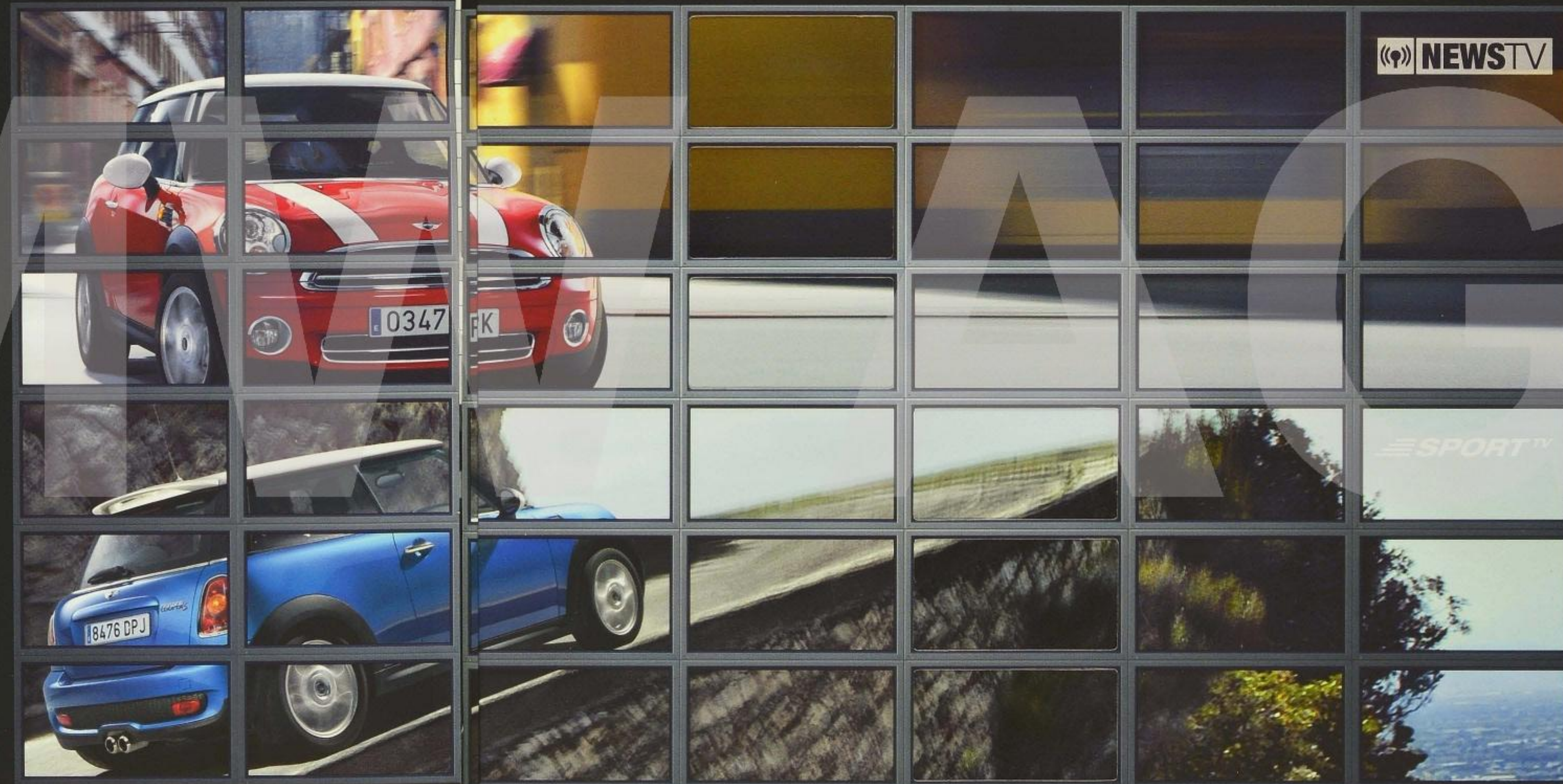


# BREAKING NEWS.

## LIGHTS, CAMERAS, ACTION!

The new MINI is here. Why not take a closer look? All you have to do is pull the tab on the right. Still not convinced? Well how about this – 120 or 175 brake horsepower, a massive variety of equipment and trim options, more space than you'd think possible, and many exciting new design features? And that's just the beginning...

### ● MINI COOPER



### ● MINI COOPER S









LIVE

NEWSTV

REACHED +++ MINI TO FORM STRATEGIC ALLIANCE WITH ROAD +++ BROAD-BASED AGREEMENT REACHED +++ MINI TO FORM STRA

Today's main story is the MINI Cooper's wide track and long wheelbase.  
Further outbreaks of go-kart feeling are widely expected.





#### MINI COOPER S

#### PLAYER PROFILE



A top performer  
(128 kW/175 bhp)

Holder of the chrome  
double-pipe exhaust

Unbeaten on tarmac

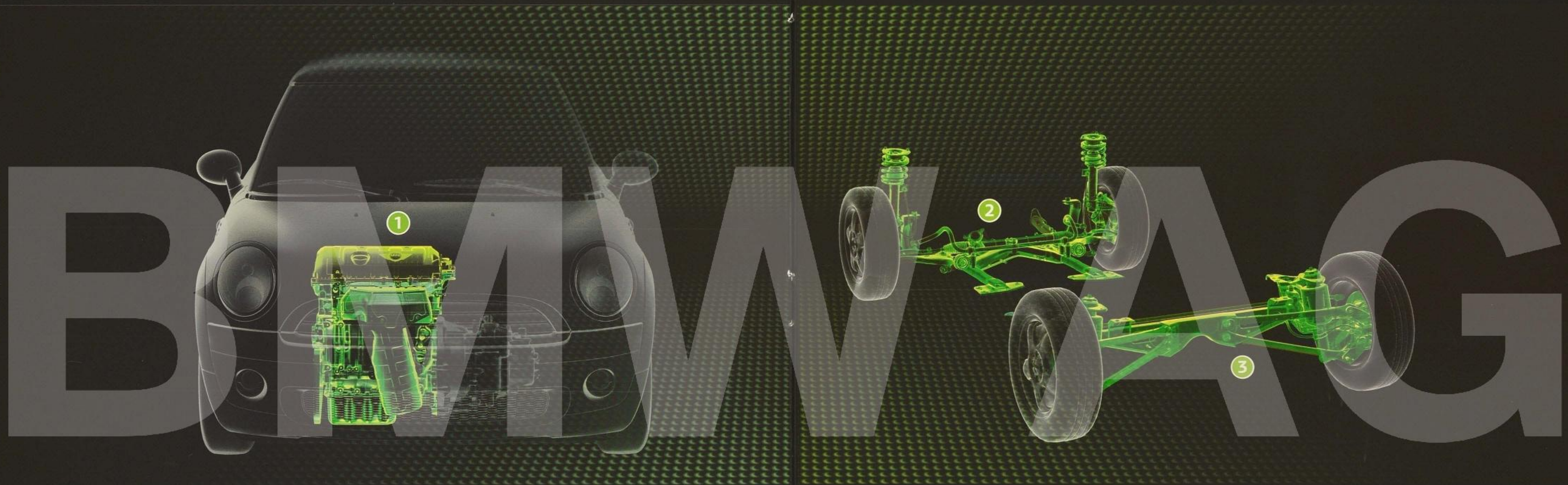
# G

#### WORLD CLASS.

Off to a flyer: with its 175 brake horsepower, the new MINI Cooper S has made a storming start to the new season. Awesome road-holding, awesome sound. And the best thing is, one place in the team is still up for grabs.



CONCEPT.



1

**MINI COOPER.**

A powerful argument: the 88 kW (120 bhp) 1.6-litre 16-valve engine develops a maximum torque of 160 Nm. Even at low engine speeds, the engine is impressively responsive, while variable valve timing ensures fuel consumption is kept to a minimum.

**MINI COOPER S.**

Wow: the new turbocharged 1.6-litre engine in the MINI Cooper S pumps out 128 kW (175 bhp) – so a fun drive is guaranteed. And thanks to the twin-scroll turbo technology with direct fuel injection, it delivers up to 260 Nm of torque, at engine speeds as low as 1,700 rpm. All that, plus responsive acceleration and a deeply satisfying engine note. Double wow, you might say.

2

**SINGLE-JOINT SPRING-STRUT FRONT AXLE.**

Where the fun begins. Two drive shafts of equal length in the front suspension minimize the extent to which the drive train interferes with the steering, and optimize the car's cornering, acceleration and braking.

3

**MULTIPLE-CONTROL-ARM REAR AXLE.**

Unique in a car of its class, ensuring optimum contact between the wheels and the road, for the best possible traction. Aluminium construction keeps weight to a minimum and increases agility.



## SAFETY.



### DSC.

The optional Dynamic Stability Control counteracts vehicle instability by intervening in the engine management and applying braking force to individual wheels at front and rear as necessary. DSC also includes hill assist, which prevents the car from rolling backwards on slopes.

### AIRBAGS.

The MINI is fitted with six airbags as standard: driver and front passenger airbags protect the head and upper body in the event of a head-on collision, while side and head airbags are primarily designed to reduce the risk of injuries to the head, chest and abdominal areas from side impacts.

### ASC+T.

Automatic Stability Control + Traction (as standard on the MINI Cooper S) prevents the front (drive) wheels from spinning, for improved traction, especially when pulling off from a standing start.

### BODY.

The body of the MINI has been reinforced at strategic points, guaranteeing extreme torsional rigidity for an exceedingly robust passenger compartment. The aim is to deliver the perfect combination of comfort, acoustics and protection.



## EQUIPMENT OPTIONS.



**1 AMBIENT LIGHTING**  
Spot on: the optional light package includes handle-area illumination in the door trim, reading and footwell lights in the front, illuminated vanity mirrors, a central interior light and five-stage adjustable ambient lighting (orange/blue) for the door handles, storage compartments in the door, B-pillar trim and soft-light on the instrument panel.

**2 RIMS**  
The only downside is you can't see them when you're driving: there are eight different light-alloy rim designs to choose from. Shown here is the racy crown-spoke version, which comes in the 7 J x 17-inch size.

**3 NAVIGATION SYSTEM**  
Way to go: the MINI navigation system features a 16:9 monitor in the central round gauge, and includes the Radio Boost CD, on-board computer and a speedometer around the outside. It directs you to your destination via voice instructions, directional arrows and/or on-screen maps. The monitor has a vertical splitscreen function.

**4 CHROME LINE EXTERIOR**  
You've heard of the gold rush – now here comes the chrome rush: depending on the model chosen, the Chrome Line Exterior may include chrome edging for the lower radiator grille, the front and rear fog lights, the rear bumper, and the tailgate handle.

**5 SPORT SEATS WITH PIPING**  
Take a seat: the optional sport seats with piping ensure you stay firmly in place, while their elegant stitching is sure to attract admiring glances.

**6 INSTRUMENT PANEL**  
Style as far as the eye can see: there is a choice of up to six surface finishes for the new-look instrument panel, depending on the model, and these can be combined with any one of the five Colour Line colours.



# EQUIPMENT OPTIONS.



**1 START/STOP BUTTON**  
Simply press, and let the fun commence.

**2 STEPTRONIC PADDLES**  
Hands on: for fast, safe gear changes, the 6-speed automatic transmission<sup>1</sup> features paddles on the steering wheel, which can be used as an alternative to the selector lever. Using the paddles means you can keep both hands on the wheel at all times.

**3 MINI COOPER S REAR END**  
Seriously built: the rear end of the MINI Cooper S features a rear fog light at either side of the striking grille, and a double-pipe exhaust system with chrome finishers. The overall effect is a powerful visual statement of the car's sporting credentials.

	MINI COOPER	MINI COOPER S
Air-conditioning/automatic air-conditioning	<input type="checkbox"/>	<input type="checkbox"/>
Airbags: driver/front passenger/side/head airbags	<input checked="" type="checkbox"/>	<input checked="" type="checkbox"/>
Automatic transmission <sup>1</sup>	<input type="checkbox"/>	<input type="checkbox"/>
Automatic Stability Control + Traction (ASC+T)	<input type="checkbox"/>	<input checked="" type="checkbox"/>
Bi-xenon headlights	<input type="checkbox"/>	<input type="checkbox"/>
Bluetooth mobile phone preparation	<input type="checkbox"/>	<input type="checkbox"/>
Central locking with remote key	<input checked="" type="checkbox"/>	<input checked="" type="checkbox"/>
Chrome Line Exterior/Chrome Line Interior	<input type="checkbox"/>	<input type="checkbox"/>
Colour Line in a choice of five colours	<input type="checkbox"/>	<input type="checkbox"/>
DAB radio	<input type="checkbox"/>	<input type="checkbox"/>
Dynamic Stability Control (DSC)	<input type="checkbox"/>	<input type="checkbox"/>
Glass roof with vent function front and rear, electric	<input type="checkbox"/>	<input type="checkbox"/>
Interior light package incl. ambient lighting	<input type="checkbox"/>	<input type="checkbox"/>
Interior surfaces:		
– Fine White Silver	<input checked="" type="checkbox"/>	<input checked="" type="checkbox"/>
– Checkered	<input type="checkbox"/>	<input checked="" type="checkbox"/>
– Piano Black, Brushed Alloy, Fluid Silver, English Oak	<input type="checkbox"/>	<input type="checkbox"/>
Manual transmission, 6-speed	<input checked="" type="checkbox"/>	<input checked="" type="checkbox"/>
MINI navigation system with 16:9 monitor and DVD	<input type="checkbox"/>	<input type="checkbox"/>
Multifunction option for sport steering wheel in leather	<input type="checkbox"/>	<input type="checkbox"/>
Park Distance Control (PDC)	<input type="checkbox"/>	<input type="checkbox"/>
Radio Wave, incl. AUX-IN connection	<input checked="" type="checkbox"/>	<input checked="" type="checkbox"/>
Radio Wave CD, incl. AUX-IN connection	<input type="checkbox"/>	<input type="checkbox"/>
Radio Boost CD, incl. AUX-IN connection	<input type="checkbox"/>	<input type="checkbox"/>
Rain sensor plus automatic driving light control	<input type="checkbox"/>	<input type="checkbox"/>
Rear backrest, divided/folding	<input checked="" type="checkbox"/>	<input checked="" type="checkbox"/>
S-Winder 16-inch light-alloy rims (195/55 R16)	<input type="checkbox"/>	<input checked="" type="checkbox"/>
Sport seats	<input type="checkbox"/>	<input checked="" type="checkbox"/>
Sport suspension	<input type="checkbox"/>	<input type="checkbox"/>
Steering wheels:		
– Steering wheel in leather, 2-spoke design, height/depth-adjustable	<input type="checkbox"/>	<input checked="" type="checkbox"/>
– Sport steering wheel in leather, 3-spoke design, height/depth-adjustable	<input type="checkbox"/>	<input type="checkbox"/>
– Multifunction sport steering wheel with wooden rim, 3-spoke design, height/depth-adjustable	<input type="checkbox"/>	<input type="checkbox"/>

<sup>1</sup> Expected to be available from the first quarter of 2007.

☒ As standard ☐ Optional equipment



# COLOURS AND MATERIALS.

## SOLID EXTERIOR COLOURS



Mellow Yellow



Chili Red



Pepper White<sup>1</sup>

## METALLIC EXTERIOR COLOURS



Astro Black



Sparkling Silver



British Racing Green<sup>1</sup>



Pure Silver



Lightning Blue<sup>1</sup>



Nightfire Red<sup>1,2</sup>



Dark Silver<sup>1,3</sup>



Laser Blue<sup>3</sup>

## COLOURS

The MINI range of colours includes a wide variety of bold solid colours and dazzling metallic options. These are combined with a striking contrast roof in Black or White, or alternatively, a roof in body colour (no-cost option).

## UPHOLSTERY



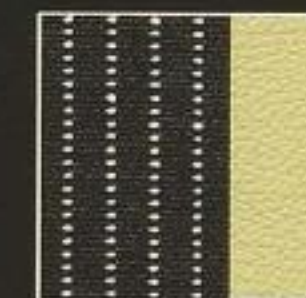
Cosmos cloth Carbon Black<sup>2</sup>



Checkered cloth Carbon Black<sup>3</sup>



Ray cloth/leather Carbon Black



Ray cloth/leather Cream White



Ray cloth/leather Pacific Blue



Ray cloth/leather Rooster Red



Gravity leather Tuscan Beige



Punch leather Carbon Black



Lounge leather Carbon Black



Lounge leather Redwood Red

## UPHOLSTERY

Depending on the kind of seat, various upholsteries are available, including cloth, leather and cloth/leather combination options. But whichever one you opt for, all MINI seats are built to the highest quality standards and are available in a wealth of colours and designs.

## INTERIOR SURFACES

Depending on the model, upholstery and colour scheme chosen, there is a choice of up to six surface finishes for the instrument panel. These are colour-coordinated with the surface of the door rings and door handles.



Fine White Silver  
As standard on the MINI Cooper



Checkered  
As standard on the MINI Cooper S



Piano Black



Brushed Alloy



Fluid Silver



English Oak



Dark Grey



Cream White



Pacific Blue



Rooster Red



Mellow Yellow

## COLOUR LINE

Choose a combination of one of the six surface finishes for the instrument panel and one of the five Colour Line colours for the knee roll and armrest in the door, and put your own personal stamp on your MINI.

<sup>1</sup> Expected to be available from December 2006.

<sup>2</sup> Only available on the MINI Cooper.

<sup>3</sup> Only available on the MINI Cooper S.



# TECHNICAL DATA AND DIMENSIONAL DRAWINGS.

ENGINE <sup>1,2</sup>	MINI COOPER	MINI COOPER S
Cylinders/layout/valves per cylinder	4/in-line/4	4/in-line/4
Displacement cm <sup>3</sup>	1598	1598
Stroke/bore mm	85.8/77.0	85.8/77.0
Max. output/max. revs kW/bhp/rpm	88/120/6000	128/175/5500
Max. torque/revs Nm/rpm	160/4250	240 (260 <sup>3</sup> )/1600-5000
Compression ratio/recommended fuel	:1 11.0/91-98 RON	10.5/91-98 RON
PERFORMANCE		
Max. speed km/h	203	225
Acceleration 0-100 km/h s	9.1	7.1
Acceleration 80-120 km/h (4th/5th/6th gear) s	9.4/12.1/14.3	5.5/7.0/8.0
FUEL CONSUMPTION <sup>2</sup>		
Urban ltr/100 km	7.8	8.9
Extra-urban ltr/100 km	4.6	5.7

<sup>1</sup> All figures relate to vehicles with the standard 6-speed manual transmission. Figures in square brackets relate to vehicles with the 6-speed fixed-ratio automatic transmission.

<sup>2</sup> All MINI models comply with the EU4 exhaust emissions standard. Fuel consumption is determined in accordance with the EU driving cycle, made up of approximately one third urban and two thirds extra-urban driving (based on the distance covered). CO<sub>2</sub> emissions are measured in addition to fuel consumption as such.

<sup>3</sup> 260 Nm between 1,700 and 4,500 rpm with overboost function.

<sup>4</sup> The figure quoted includes a 90% tank filling, 68 kg for the driver and 7 kg for luggage. Unladen weight applies to vehicles with standard equipment. Optional equipment may increase this figure.

FUEL CONSUMPTION <sup>2</sup>	MINI COOPER	MINI COOPER S
Combined ltr/100 km	5.8	6.9
CO <sub>2</sub> emissions g/km	139	164
Tank capacity, approx. ltr	40	50
WEIGHT		
Unladen EU <sup>4</sup> kg	1140 [1180]	1205 [1230]
Max. permitted kg	1515 [1555]	1580 [1605]
Permitted load kg	450	450
Permitted axle load front/back kg	855/740	855/755
Permitted trailer load, max. 12% gradient kg	750	-
Permitted roof load kg	75	75
WHEELS		
Tyre dimensions front/back	175/65 R15 H	195/55 R16 87V
Wheel dimensions front/back	5.5 J x 15 LM	6.5 J x 16 LM

MINI COOPER



MINI COOPER S





# BMW AG

The models, standard and optional equipment and combinability of options as described in this flyer relate to cars supplied by BMW AG for the German market. The availability of standard and optional equipment, and the combinability of options, may vary from country to country within the European Union for all models. For detailed information about the situation in your country, please contact your authorized MINI dealer. Subject to change in design and equipment.

The people, quotes and events described in this flyer are entirely fictitious and any resemblance to actual persons, living or dead, is purely coincidental.

© BMW AG, Munich, Germany. Not to be reproduced, wholly or in part, without written permission of BMW AG, Munich.

For more information, visit [www.MINI.com](http://www.MINI.com)