



**MINI.  
MINI CABRIO.**





**KALDES EN GOKART EGENTLIG EN GOKART OVERALT I VERDEN?  
(IS THE WORD GO-KART THE SAME IN EVERY LANGUAGE?)**

On the following pages you'll find a few phrases that should be familiar to MINI drivers all over the world.



**OUVERTURE 24 H/24. FERMETURE EN 15 SECONDES.  
(OPEN 24/7. CLOSSES IN JUST 15 SECONDS.)**

Blink and you'll miss it. The integrated sunroof function can even be operated while the car is in motion.





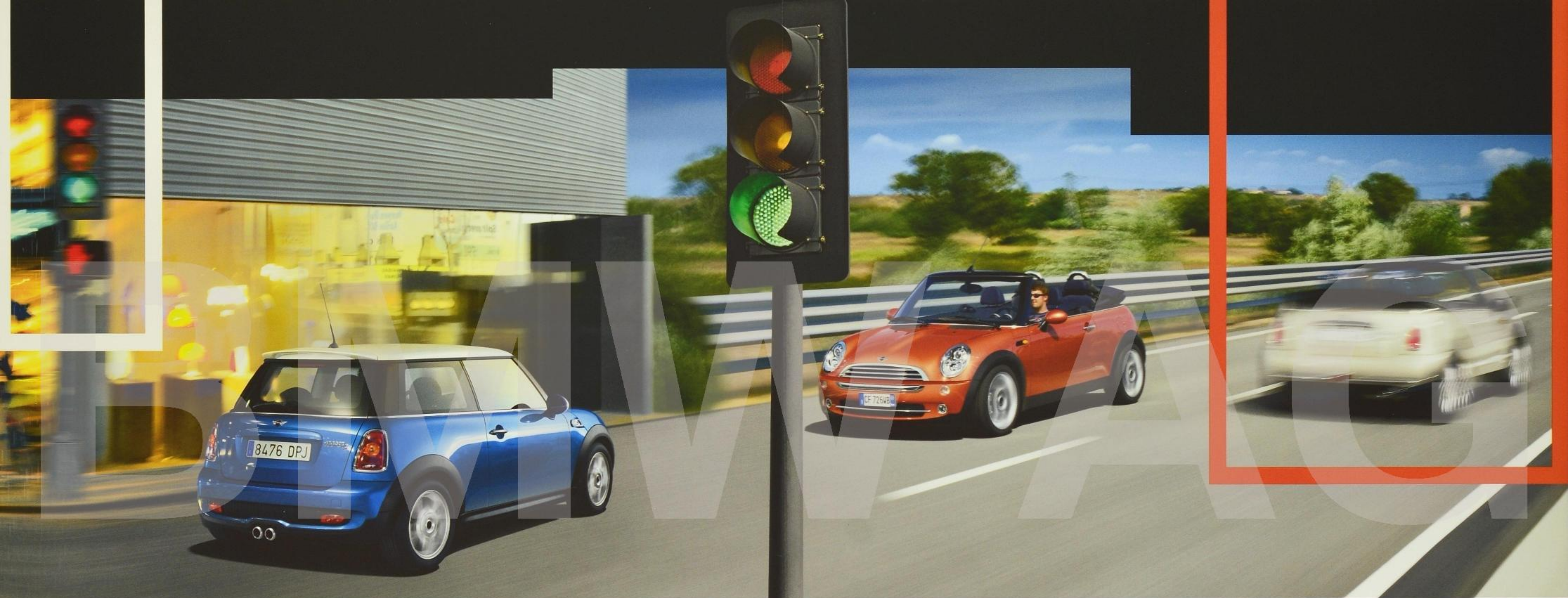
**IL PASSO E LA CARREGGIATA? PRESTO DETTO: LUNGO E LARGA.  
(WHEELBASE AND TRACK? IN TWO WORDS: "LONG" AND "WIDE".)**

Wide track, long wheelbase, short overhangs, low centre of gravity – it all adds up to pure go-kart feeling.

**TILAA KAHDEKSALLE HENKILÖLLE – NELJÄ SIIHEN, NELJÄ TAKAISIN.  
(SEATS EIGHT IN COMFORT – FOUR ON THE WAY THERE, FOUR ON THE WAY BACK.)**

Not every four-seater is a MINI. But every MINI is a genuine four-seater. Including the MINI Cabrio.





**TE SNEL? MAAR IK ZAT NOG MAAR IN TWEE!  
(TOO FAST? BUT I WAS ONLY IN SECOND GEAR!)**

The MINI Cooper S has a displacement of 1.6 litres, a power output of 128 kW (175 bhp), 260 Nm of torque and races to 100 km/h in just 7.1 seconds.

**MEJOR PROTEGIDO QUE EL MUSEO DE ARTE MODERNO.  
(BETTER PROTECTED THAN THE MUSEUM OF MODERN ARTS.)**

ABS, CBC and EBD as standard, with optional ASC+T (as standard on the MINI Cooper S) and DSC. On the MINI Cabrio and every other MINI.



## MINI COOPER. MINI COOPER S.

### MINI COOPER.



### MINI COOPER S.



All figures in millimetres.

There is a generous amount of interior space, and the seats adjust to give a perfect fit for passengers of all shapes and sizes.



Way to go! The optional navigation system with 16:9 LCD monitor guides you to your destination with a combination of voice directions, arrows and/or maps.



There are six possible surface finishes for the instrument panel, and depending on the upholstery chosen, these can be combined with five Colour Line colours for the knee roll and the armrests in the doors.

## TECHNICAL DATA

		MINI COOPER	MINI COOPER S
Unladen weight (EU)	kg	1140 [1180]	1205 [1230]
Displacement	cm <sup>3</sup>	1598	1598
Max. output/max. revs	kW/bhp/rpm	88/120/6000	128/175/5500
Max. torque/revs	Nm/rpm	160/4250	240 (260**)/1600-5000
Acceleration 0-100 km/h	sec	9.1	7.1
Acceleration 80-120 km/h (4th/5th/6th gear)	sec	9.4/12.1/14.3	5.5/7.0/8.0
Top speed	km/h	203	225
Fuel consumption (urban)	l/100 km	7.8	8.9
Fuel consumption (extra-urban)	l/100 km	4.6	5.7
Fuel consumption (combined EU cycle)	l/100 km	5.8	6.9
Luggage capacity*	l	160-680	160-680
CO <sub>2</sub> emissions	g/km	139	164
Tank capacity	l	40	50

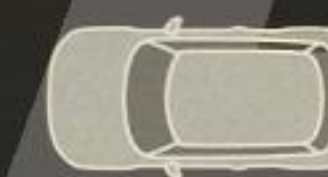
Figures in square brackets relate to vehicles with 6-speed fixed-ratio automatic transmission.  
 \* Varies between 150 and 670 litres depending on whether all, half or none of the rear backrest is folded down.  
 \*\* 260 Nm between 1,700 and 4,500 rpm with overboost function.



Contrast roof in White



Contrast roof in Black



Roof in body colour

### MINI COOPER/MINI COOPER S

Contrast roof in Black, mirror caps in high-gloss black; contrast roof in White, mirror caps in high-gloss white – wheel rims also available in White; roof in body colour, mirror caps in body colour (no-cost option).

The MINI is available in a wide choice of solid and metallic colours. But whichever you choose, it's guaranteed to look good.

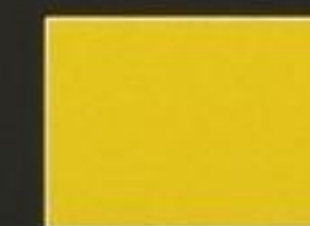
### SOLID COLOURS



Pepper White<sup>1</sup>



Chili Red



Mellow Yellow

### METALLIC COLOURS



British Racing Green<sup>1</sup>



Lightning Blue<sup>1</sup>



Sparkling Silver



Pure Silver



Astro Black



Dark Silver<sup>1,3</sup>



Laser Blue<sup>3</sup>



Nightfire Red<sup>1,2</sup>

<sup>1</sup> Expected to be available from December 2006.  
<sup>2</sup> Not available on MINI Cooper S.  
<sup>3</sup> Only available on MINI Cooper S.



## EQUIPMENT

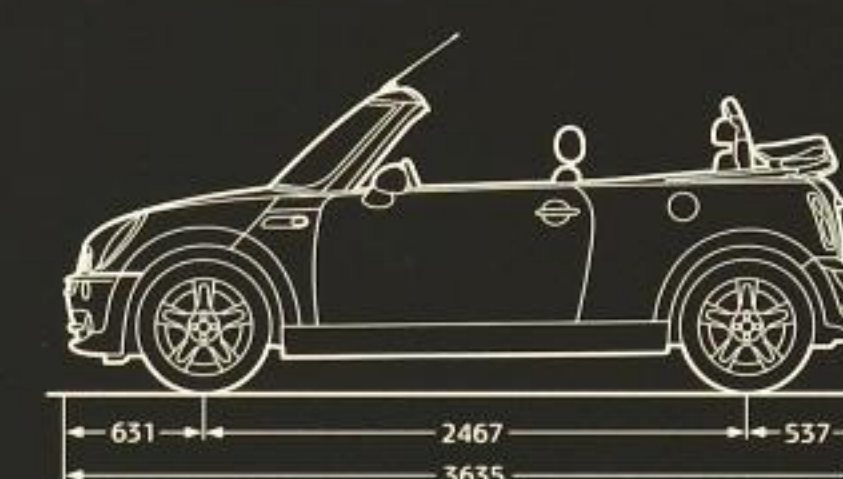
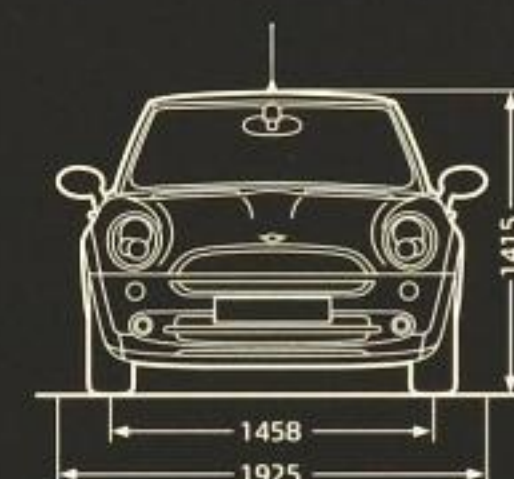
	MINI COOPER	MINI COOPER S
Airbags: driver/front passenger/side/head airbags	■	■
Air-conditioning/automatic air-conditioning	□	□
Automatic Stability Control + Traction (ASC+T)	□	■
Automatic transmission <sup>1</sup>	□	□
Bi-xenon headlights	□	□
Bluetooth mobile phone preparation	□	□
Central locking with remote key	■	■
Chrome Line Exterior/Chrome Line Interior	□	□
Colour Line in a choice of five colours	□	□
DAB radio tuner	□	□
Dynamic Stability Control (DSC)	□	□
Glass roof with vent function front and rear, electric	□	□
Interior light package incl. ambient lighting	□	□
Interior surfaces:		
– Fine White Silver	■	■
– Checkered		■
– Piano Black, Brushed Alloy, Fluid Silver, English Oak	□	□
Manual transmission, 6-speed	■	■
Multifunction option for sport steering wheel in leather	□	□
MINI navigation system with 16:9 monitor	□	□
Park Distance Control (PDC)	□	□
Radio Wave incl. AUX-IN connection	■	■
Radio Wave CD incl. AUX-IN connection	□	□
Radio Boost CD incl. AUX-IN connection	□	□
Rain sensor plus automatic driving light control	□	□
Rear backrest, divided/folding	■	■
S-Winder 16-inch light-alloy wheels (195/55 R 16)		■
Sport suspension	□	□
Sport seats	□	■
Steering wheel:		
– Steering wheel in leather, 2-spoke design, height- and depth-adjustable	□	■
– Sport steering wheel in leather, 3-spoke design, height- and depth-adjustable	□	□
– Multifunction sport steering wheel with wooden rim, 3-spoke design, height- and depth-adjustable	□	□

■ as standard □ optional extra

<sup>1</sup> Expected to be available from the first quarter of 2007.

## MINI ONE CABRIO. MINI COOPER CABRIO. MINI COOPER S CABRIO.

## MINI ONE CABRIO. MINI COOPER CABRIO.



## MINI COOPER S CABRIO.



All figures in millimetres.



The MINI Cabrio's fully automatic convertible soft top not only opens and closes at the touch of a button (in just 15 seconds), but also features an integrated sunroof function that opens to a maximum of 40 centimetres and can be operated while the car is moving at up to 120 km/h.



The tailgate folds down and the rear section of the soft top swings up, giving a wider opening for better access to the luggage area (Easy Load function). With the rear backrests folded down, the MINI Cabrio has a luggage capacity of 605 litres.



## TECHNICAL DATA

		MINI ONE CABRIO	MINI COOPER CABRIO	MINI COOPER S CABRIO
Unladen weight (EU)	kg	1240	1250 [1265]	1315 [1335]
Displacement	cm <sup>3</sup>	1598	1598	1598
Max. output/max. revs	kW/bhp/rpm	66/90/5500	85/115/6000	125/170/6000
Max. torque/revs	Nm/rpm	140/3000	150/4500	220/4000
Acceleration 0–100 km/h	sec	11.8	9.8 [11.2]	7.4 [7.9]
Acceleration 80–120 km/h (4th/5th/6th gear)	sec	13.5/16.0	11.6/14.4	6.6/8.4/11.0
Top speed	km/h	175	193 [182]	215 [215]
Fuel consumption (urban)	l/100 km	10.0	10.1 [11.2]	11.8 [13.1]
Fuel consumption (extra-urban)	l/100 km	5.7	5.7 [6.0]	7.1 [6.9]
Fuel consumption (combined EU cycle)	l/100 km	7.2	7.3 [7.9]	8.8 [9.2]
Luggage capacity*	l	120/165–605	120/165–605	120/165–605
CO <sub>2</sub> emissions	g/km	173	175 [189]	211 [221]
Tank capacity	l	50	50	50

Figures in square brackets relate to vehicles with Continuously Variable automatic transmission (CVT) or 6-speed fixed-ratio automatic transmission with Adaptive Transmission Control (ATC).

\* Varies depending on whether the soft top is open (120 l) or closed (165 l, 605 l with both rear backrests folded down).



Soft top in Black

Soft top in Blue

Soft top in Green

**SOFT TOP IN BLACK:**  
as standard on all MINI Cabrios.

**SOFT TOP IN BLUE:** available as an optional extra on the MINI Cooper Cabrio and MINI Cooper S Cabrio.

**SOFT TOP IN GREEN:** available as an optional extra on the MINI Cooper Cabrio and MINI Cooper S Cabrio.

With a MINI Cabrio, there are more possibilities than you ever imagined. And that goes for the choice of paints, upholstery and soft top colours too. There is an almost bewildering variety of possible combinations. Particularly striking is the metallic Cool Blue effect colour – depending on how the light strikes it, it can appear almost grey or a dazzling blue. But it's always appealing to the eye.

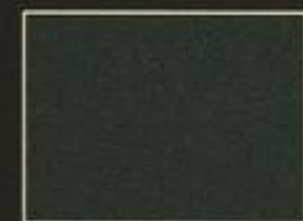
## SOLID COLOURS METALLIC COLOURS



Pepper White



Chili Red



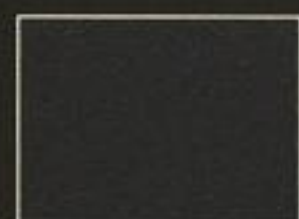
British Racing Green



Hyper Blue<sup>2</sup>



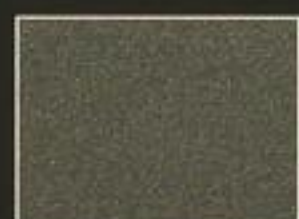
Lightning Blue<sup>1</sup>



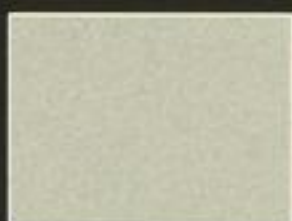
Astro Black



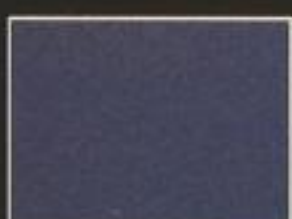
Hot Orange



Dark Silver<sup>3</sup>



Pure Silver



Cool Blue  
(Effect colour)

<sup>1</sup> Expected to be available from December 2006.

<sup>2</sup> Not expected to be available after December 2006.

<sup>3</sup> Only available on MINI Cooper S Cabrio.

## EQUIPMENT

	MINI ONE CABRIO	MINI COOPER CABRIO	MINI COOPER S CABRIO
Airbags: driver/front passenger airbags, head/thorax side airbags	■	■	■
Air-conditioning/automatic air-conditioning	□	□	□
Automatic Stability Control + Traction (ASC+T)	□	□	■
Automatic transmission		□	□
Bluetooth mobile phone preparation	□	□	□
Chrome Line Exterior/Chrome Line Interior	□	□	□
Dynamic Stability Control (DSC)	□	□	□
Harman/kardon HiFi loudspeaker system	□	□	□
Heated glass rear windscreen	■	■	■
Interior surfaces:			
– Alloy patina	□	□	■
– High-gloss anthracite <sup>1</sup>	■	■	□
– High-gloss silver <sup>1</sup>	□	□	□
– Wood décor <sup>2</sup> /body colour	□	□	□
Manual transmission, 5-speed	■	■	
Manual transmission, 6-speed			■
Multifunction option for steering wheel in leather	□	□	□
Navigation system with 16:9 monitor	□	□	□
Park Distance Control (PDC)	■	■	■
Radio Boost CD incl. AUX-IN connection	□	□	□
Rain sensor plus automatic driving light control	□	□	□
Rear backrest, divided/folding	■	■	■
Recaro sport seats	□	□	□
Revolution counter with outside temperature and digital speed display	□	□	□
Sport suspension	□	□	■
Sport seats	□	□	■
Steering wheel:			
– MINI Cooper S steering wheel in leather, height-adjustable	□	□	■
– Sport steering wheel in leather, 3-spoke design, height-adjustable	□	□	□
– Sport steering wheel with wooden rim, 3-spoke design, height-adjustable	□	□	□
Xenon lights	□	□	□

■ as standard □ optional extra

<sup>1</sup> No-cost option on MINI Cooper S Cabrio.

<sup>2</sup> Expected to be available from December 2006.



## RECYCLING.

At every stage, from design to disassembly, recycling is central to the MINI philosophy. For example, all the materials used in its manufacture were selected because they can be used in a sustainable and environmentally friendly way. And every MINI is built to be easily and economically recycled when its driving days are finally done. We have been working on this approach since 1994 at the BMW Group Recycling and Disassembly Centre in Munich, the only facility of its kind. Your authorized MINI dealer will also be pleased to advise you on the disposal of your old vehicle.

## WARRANTY.

Every MINI is supplied with a 2-year unlimited mileage dealer warranty. (This excludes wear-and-tear parts.)

Every MINI also comes with a 12-year anti-corrosion warranty, which covers the vehicle against rusting of the body panels. This warranty is dependent on any previous damage to the vehicle body or under-body (e.g. stone impact damage, scratches, dents, accident damage or other damage caused by environmental factors) having been correctly repaired in accordance with current MINI guidelines.

The painted surfaces of the car are covered by an extended 3-year warranty. This excludes any damage to painted surfaces caused by external or environmental factors.

The models, standard and optional equipment and combinability of options in this flyer relate to cars supplied by BMW AG for the German market. The availability of standard and optional equipment, and the combinability of options, may vary from country to country within the European Union for all models. For detailed information about the situation in your country, please contact your authorized MINI dealer. Subject to change in design and equipment.

The people, quotes and events described in this flyer are entirely fictitious and any resemblance to actual persons, living or dead, is purely coincidental.

© BMW AG, Munich, Germany. Not to be reproduced, wholly or in part, without written permission of BMW AG, Munich.

For more information, visit [www.MINI.com](http://www.MINI.com)