

**MINI COOPER CLUBMAN.
MINI COOPER D CLUBMAN.
MINI COOPER S CLUBMAN.**

EXPERIENCE

EIGHT STEPS TO YOUR VERY OWN MINI



A NEW BREED HITS THE STREETS.
MINI CLUBMAN. THE OTHER MINI.

MINI PRESENTS.

MINI Clubman

04

MINI YOUR WAY.

Create your own MINI Clubman. Two models, a whole world of equipment options – in eight quick and easy steps.

1. Concept and safety	28
2. Models	42
3. Colours and upholstery	44
4. Exterior design and wheels	56
5. Interior design	62
6. Music, communications and technology	70
7. Performance	76
8. Accessories	78

MINI DATA.

The key facts and figures at a glance, plus detailed information about servicing, finance, recycling and warranties.

Technical data	86
Dimensional drawings	88
MINI Service	90
MINI Financial Services	92
Warranty and recycling	95

Details of fuel consumption and CO₂ emissions as required under EU law can be found in the Technical Data section on pages 86/87.



EXPERIENCE

EIGHT STEPS TO YOUR VERY OWN MINI

The shooting-brake design of the MINI Clubman combines extraordinary looks and outstanding performance with something not many cars possess these days: character.

A CAR THAT DARES TO BE DIFFERENT.

EIGHT STEPS TO YOUR VERY OWN MINI



**GREAT DESIGN SHOULD GO
BEYOND THE OBVIOUS.**



Built for those who love the remarkable: the unmistakable silhouette and unique door design of the MINI Clubman make it instantly recognizable. And it has space for up to five people and their gear – more than enough, whatever you're up to.



EIGHT STEPS TO YOUR VERY OWN MINI

THE CLUBDOOR: BACKWARD-OPENING, FORWARD-THINKING.

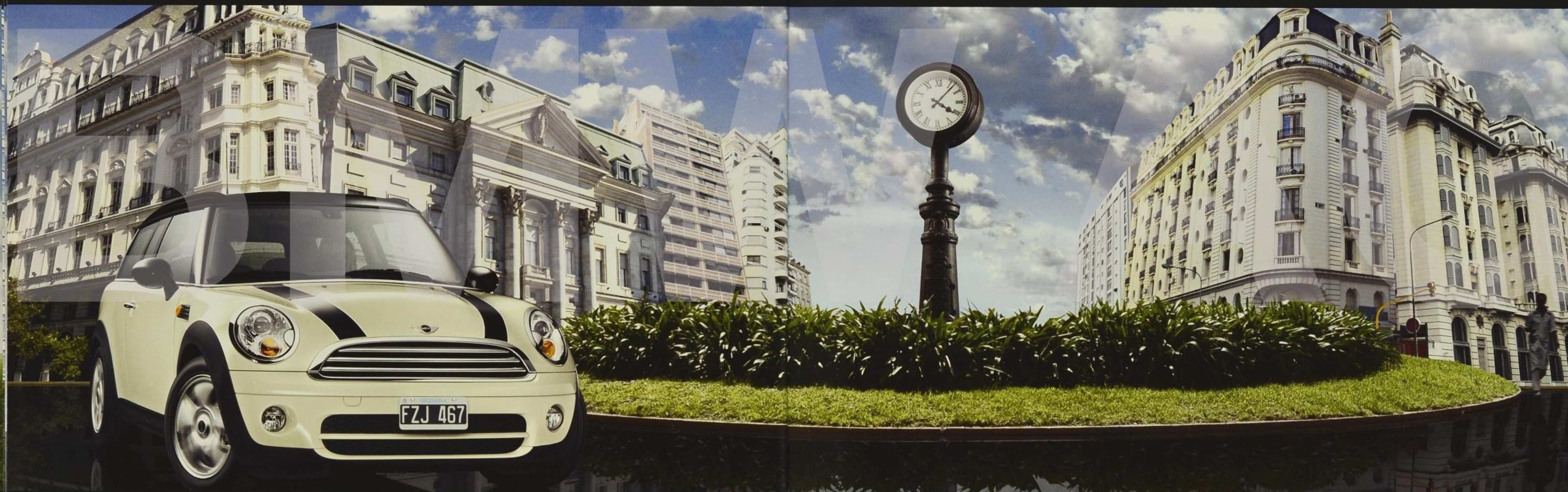
Truly unique door design: both the Clubdoor on the right-hand side and the Splitdoor at the rear make it easy to get in and out, easy to load and unload, and easy to fall in love at first sight.



EIGHT STEPS TO YOUR VERY OWN MINI

It doesn't take much to be happy. Well, not much diesel fuel anyway. With its powerful 110-horsepower engine and exceptional roadholding, the MINI Cooper D Clubman guarantees maximum driving fun, yet consumes just 4.1 litres of fuel per 100 kilometres, and emits just 109 grams of carbon dioxide per kilometre.

JUST ADD DIESEL FOR INSTANT FUN.



EIGHT STEPS TO YOUR VERY OWN MINI

SAFETY IS NOT AN OPTIONAL EXTRA.

Whatever happens, your safety is a pretty safe bet. Belt tensioners, a body reinforced in all the right places, and six front, head and side airbags as standard deliver outstanding protection in every MINI Clubman.

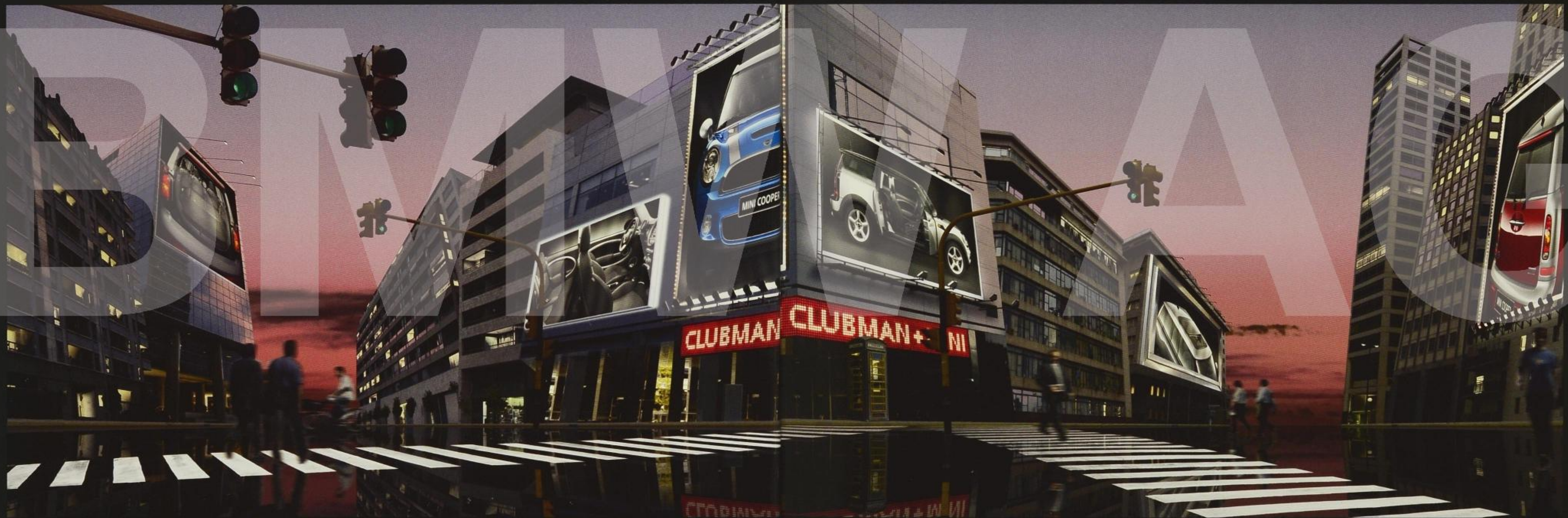


EIGHT STEPS TO YOUR VERY OWN MINI

Want to make your MINI Clubman as individual as you are? No problem, thanks to a multitude of options, including different colours for the C-pillars and roof. The only tricky bit is deciding which ones are right for you.

**A MILLION DIFFERENT POSSIBILITIES –
AND ONE OF THEM'S GOT YOUR NAME ON IT.**

EIGHT STEPS TO YOUR VERY OWN MINI



**WE ALL NEED SOMEONE TO LOOK UP TO:
THE MINI COOPER S CLUBMAN.**

The MINI Cooper S Clubman has got the lot. The engine note, the powerful front end with its extra air intake, and the two tailpipes in the rear corners make your heart beat faster before you even get out of neutral.

EIGHT STEPS TO YOUR VERY OWN MINI



The legendary MINI go-kart feeling makes every corner an experience to savour. The long wheelbase, wide track and low centre of gravity ensure you stick to the road like glue.

**LIFE'S MORE INTERESTING WITH
A FEW TWISTS AND TURNS.**



EIGHT STEPS TO YOUR VERY OWN MINI

**SAFETY MEANS THAT DRIVING DRAMAS
NEEDN'T END IN TRAGEDY.**

The MINI Clubman features active safety systems that intervene before an accident has chance to happen. For example, Dynamic Stability Control (DSC) is fitted as standard. It reacts instantly to any loss of grip, such as that caused by front-axle wheelspin, and ensures power is transferred effectively to the tarmac at all times.

EIGHT STEPS TO YOUR VERY OWN MINI



Invigorating acceleration, masses of power, pure driving fun: that's the MINI Cooper S Clubman, with its 175-horsepower (128 kW) turbocharged engine. Make the most of your freedom – in the city, on the motorway, or wherever life takes you.

A 175-HORSEPOWER MOBILE URBAN LIVING SPACE.



**THE MINI CLUBMAN.
READY WHEN YOU ARE.**

The best way to get to know the MINI Clubman is to take a test drive. But if you can't wait to find out more, just turn the page.





1. CONCEPT
AND SAFETY



2. MODELS



3. COLOURS AND
UPHOLSTERY



4. EXTERIOR DESIGN
AND WHEELS



5. INTERIOR DESIGN



6. MUSIC, COMMUNICATIONS
AND TECHNOLOGY



7. PERFORMANCE



8. ACCESSORIES

BMW AG

THE 1,001 FACES OF THE MINI CLUBMAN.

Putting together your own MINI Clubman couldn't be easier. The symbols at the top of the page will guide you through the process step by step. First choose your model – will it be 110, 120 or 175 horsepower? Racy rims, an extra-tactile steering wheel – or both? A 230-watt amplifier, or a MINI Clubman navigation system? Eight easy steps to your very own MINI Clubman.

The standard and optional equipment available in your country may differ from that described in this brochure. For more information, please contact your local authorized MINI dealer.

EIGHT STEPS TO YOUR VERY OWN MINI



1. CONCEPT AND SAFETY

2. MODELS



3. COLOURS AND UPHOLSTERY



4. EXTERIOR DESIGN AND WHEELS



5. INTERIOR DESIGN



6. MUSIC, COMMUNICATIONS AND TECHNOLOGY



7. PERFORMANCE



8. ACCESSORIES



1

SINGLE-JOINT SPRING-STRUT FRONT AXLE.

Where the fun begins. Two drive shafts of equal length in the front suspension minimize the extent to which the drive train interferes with the steering, and optimize the car's cornering, acceleration and braking.

2

MULTIPLE-CONTROL-ARM REAR AXLE.

Unique in a car of this class, ensuring optimum contact between the wheels and the road, for the best possible traction. Aluminium construction keeps weight to a minimum and increases agility.

3

RACK-AND-PINION STEERING.

A turn for the better. Electronic power assist ensures outstanding steering response, with the driver receiving precise and involving feedback. The stiffness of the steering wheel adjusts to the speed of the car, for easier steering at low and high speeds alike. For maximum comfort, it is only 2.4 turns from full lock to full lock.



1. CONCEPT AND SAFETY

2. MODELS



3. COLOURS AND UPHOLSTERY



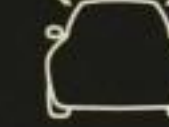
4. EXTERIOR DESIGN AND WHEELS



5. INTERIOR DESIGN



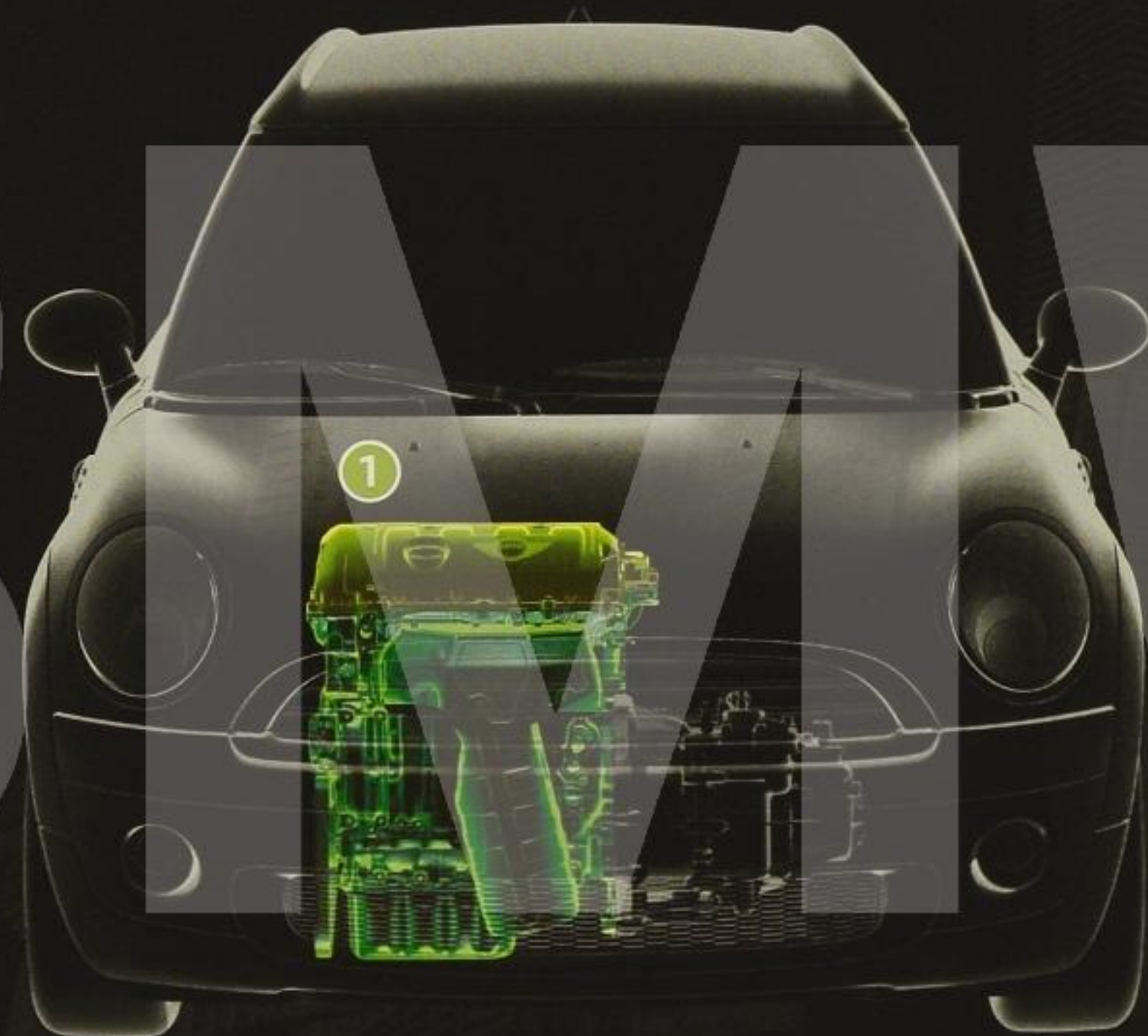
6. MUSIC, COMMUNICATIONS AND TECHNOLOGY



7. PERFORMANCE



8. ACCESSORIES



1 THREE ENGINES, ONE UNIQUE DRIVING EXPERIENCE.

MINI Cooper Clubman: the figures – 120 hp (88 kW), 160 Nm, 201 km/h. The feeling – instantaneous reaction to the accelerator, but a fuel consumption of just 5.5 litres per 100 kilometres thanks to fully variable valve timing.

MINI Cooper D Clubman: the common-rail diesel engine with particulate filter as standard pumps out 110 hp (80 kW), and the overboost function delivers up to 260 Nm of torque, for maximum acceleration.

MINI Cooper S Clubman: the twin-scroll turbo produces 175 hp (128 kW) of power, and the overboost function delivers 260 Nm of torque. In practical terms, that means 0 to 100 km/h in 7.6 seconds, and a top speed of 224 km/h.



2



2 SHORT AND SWEET.

Accelerating the pace of change. All MINI Clubman models come as standard with a 6-speed manual transmission, designed for short, positive, precise gear shifts. A 6-speed automatic transmission with Steptronic is available as an optional extra.



1. CONCEPT AND SAFETY

2. MODELS



3. COLOURS AND UPHOLSTERY



4. EXTERIOR DESIGN AND WHEELS



5. INTERIOR DESIGN



6. MUSIC, COMMUNICATIONS AND TECHNOLOGY



7. PERFORMANCE



8. ACCESSORIES



MINIMALISM. LESS IS MORE.

Cutting out the fumes needn't mean cutting out the fun. This is true for all three MINI Clubman models: the MINI Cooper D Clubman uses just 4.1 litres of fuel per 100 kilometres and emits only 109 grams of carbon dioxide per kilometre, while for the MINI Cooper Clubman and MINI Cooper S Clubman, the relevant figures are 5.5 litres (132 grams), and 6.3 litres (150 grams) respectively. This is made possible by a range of innovative technologies:

1

AUTOMATIC START-STOP FUNCTION.

The Automatic Start-Stop Function (manual transmission only) means that when the engine is idling – for example, at a red light or in a traffic jam – it is automatically switched off. As soon as the clutch pedal is depressed, the engine is switched back on.

2

SHIFT POINT DISPLAY.

The Shift Point Display (manual transmission only) tells you via instructions in the revolution counter display what gear you should be in to maximize fuel economy, reducing your emissions and your expenditure on fuel. Clever or what?

3

BRAKE ENERGY REGENERATION.

Brake Energy Regeneration uses Intelligent Alternator Control to convert unneeded braking force into electricity. The battery is only charged normally when the driver's foot is not on the gas – under acceleration, less energy is diverted to charging the battery.



1. CONCEPT AND SAFETY

2. MODELS



3. COLOURS AND UPHOLSTERY



4. EXTERIOR DESIGN AND WHEELS



5. INTERIOR DESIGN



6. MUSIC, COMMUNICATIONS AND TECHNOLOGY



7. PERFORMANCE



8. ACCESSORIES



1

INTERIOR SPACE AND SEATING.

The MINI Clubman is designed for every aspect of modern living. Its interior offers plenty of freedom of movement, and seats for passengers of all heights and builds, with excellent lateral support. The driver's seat can be adjusted to give the ideal position in relation to the pedals and the steering wheel, which is itself height and depth-adjustable. The rear seat bench comes with three seats and headrests, comfortably accommodating two adults and a child of up to 49 kilograms. A two-seat version is also available as a no-cost option.

The Clubdoor makes access to the rear of the car extremely easy, while the Splitdoor at the rear, the optional flat luggage-compartment floor, and the angle-adjustable rear seat bench (with cargo position) simplify the task of loading bulky items. If one or both halves of the rear backrest are folded down, luggage capacity can be expanded, up to a maximum of 930 litres.

2

INTERIOR DESIGN.

Attractive down to the last details, such as the large speedometer with built-in radio controls and revolution counter with outside temperature and digital speed display. Everything about the MINI Clubman will draw admiring glances, everywhere it goes.



1. CONCEPT AND SAFETY

2. MODELS



3. COLOURS AND UPHOLSTERY



4. EXTERIOR DESIGN AND WHEELS



5. INTERIOR DESIGN



6. MUSIC, COMMUNICATIONS AND TECHNOLOGY



7. PERFORMANCE



8. ACCESSORIES



BRAKING SYSTEM.

Four disc brakes with Anti-lock Braking System (ABS) and Cornering Brake Control (CBC) as standard ensure optimum braking performance in any situation. Electronic Braking force Distribution (EBD) manages the distribution of braking force between the front and rear axles. Brake assist accelerates the delivery of braking force to ensure the shortest possible stopping distances.

LIMITED-SLIP DIFFERENTIAL.

For improved traction on difficult surfaces. If one wheel loses purchase, drive is transferred to the wheel with better grip, allowing higher cornering speeds. The self-regulating differential (optional on the MINI Cooper S Clubman) increases both driving enjoyment and safety, so you get where you're going even faster.



DTC

EDLC

DSC AND DTC.*

Dynamic Stability Control (DSC) counteracts vehicle instability by intervening in the engine management and applying braking force to individual wheels at front and rear as necessary. It also includes hill assist. The optional **Dynamic Traction Control (DTC)*** with electronic differential lock control (EDLC) gives drivers the option to make more of the MINI's natural handling, by delaying interventions in engine management and braking until the last possible moment. As a result, skilled drivers can still use the accelerator pedal to powerslide – although should the inner wheel lose too much traction, EDLC will apply braking to it, ensuring the car maintains forward momentum through corners and on surfaces with variable levels of grip. Braking interventions on the rear axle also help the car to hold its line when cornering.

* Expected to be available from first quarter of 2009.



1. CONCEPT AND SAFETY

2. MODELS



3. COLOURS AND UPHOLSTERY



4. EXTERIOR DESIGN AND WHEELS



5. INTERIOR DESIGN



6. MUSIC, COMMUNICATIONS AND TECHNOLOGY



7. PERFORMANCE



8. ACCESSORIES



BODY.

The body of the MINI Clubman has been reinforced at strategic points, guaranteeing extreme torsional rigidity for an exceedingly robust passenger compartment. The aim is to deliver the perfect combination of comfort, acoustics and protection.

SUSPENSION.

The combination of a single-joint spring-strut front axle and a multiple-control-arm rear axle with wide track and a low centre of gravity results in the unmistakable MINI feeling: stable, agile, with excellent cornering ability at all speeds, plus superb traction and outstanding safety.

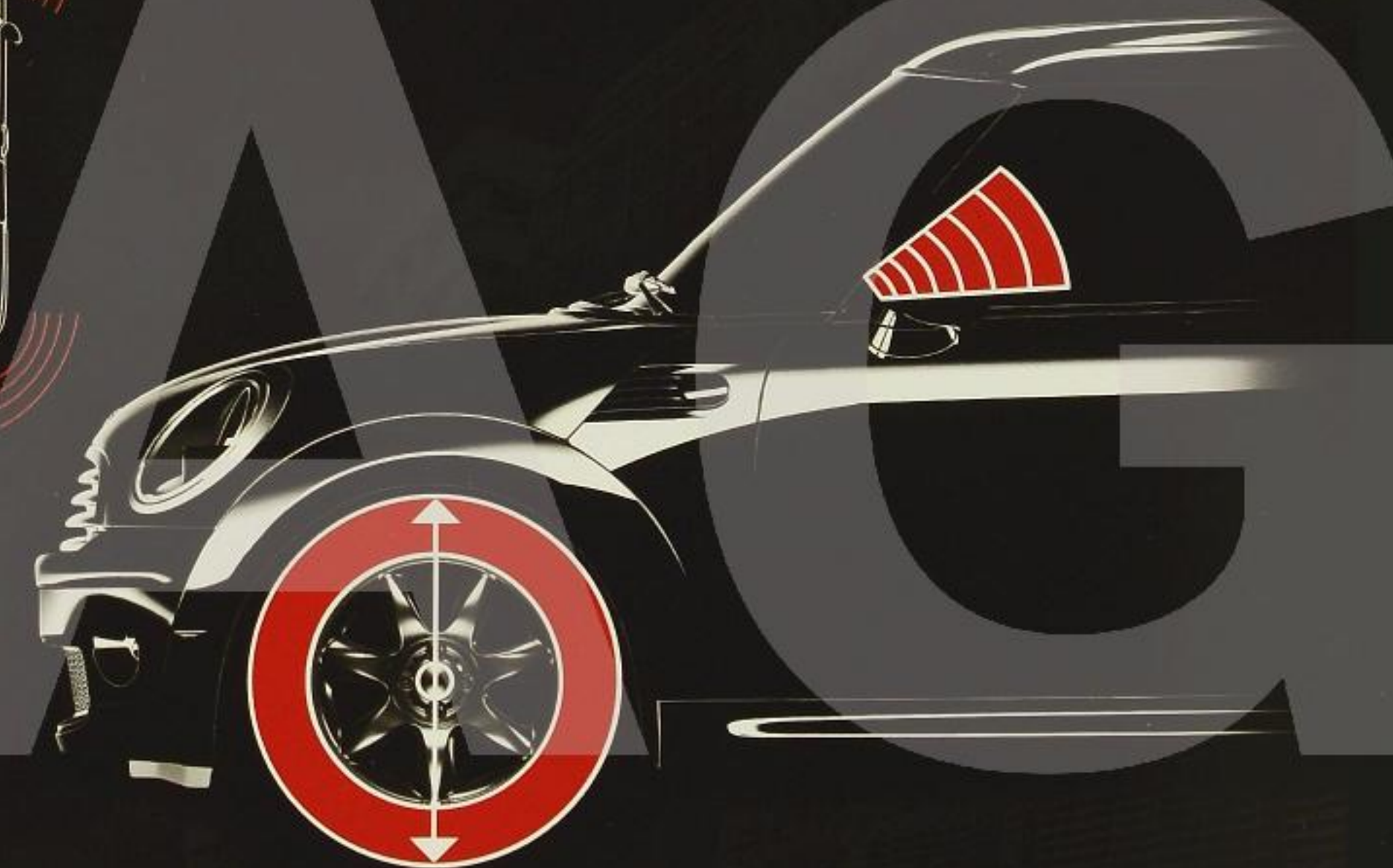


CRASH SENSOR.

The crash sensor automatically deploys the airbags in the event of an impact, and unlocks the doors, ensuring the occupants of the car can get out in a hurry. Interior and hazard lights are also automatically switched on.

ALARM SYSTEM.

Where this optional system is fitted, a siren sounds and the hazard lights are switched on if anyone attempts to move or break into the vehicle.



RSC TYRES WITH RUNFLAT PROPERTIES.

The runflat tyres (available for 16-inch rims and above) are designed in such a way that the car can keep driving in the event of a sudden loss of tyre pressure. Even with a completely flat tyre, it can continue for up to 150 kilometres at speeds as high as 80 km/h.

RUNFLAT INDICATOR (RFI).

A warning light in the cockpit alerts the driver in the event of any loss of tyre pressure.



1. CONCEPT AND SAFETY

2. MODELS



3. COLOURS AND UPHOLSTERY



4. EXTERIOR DESIGN AND WHEELS



5. INTERIOR DESIGN



6. MUSIC, COMMUNICATIONS AND TECHNOLOGY



7. PERFORMANCE



8. ACCESSORIES



RESTRAINT SYSTEM.

A combination of 3-point belts, belt tensioners and integrated belt catch means driver and front-seat passenger enjoy the best possible protection in the event of a crash.

ISOFIX.

To ensure the safety of younger passengers, up to two ISOFIX child seats can be mounted in the rear.



AIRBAGS.

The MINI Clubman is fitted with six airbags as standard: driver and front passenger airbags protect the head and upper body in the event of a head-on collision, while side and head airbags are primarily designed to reduce the risk of injuries to the head, chest and abdominal areas from side impacts.



REVERSIBLE BUMPERS.

Front and rear bumpers help prevent damage to the body of the car in low-speed impacts.



REINFORCED PANELS.

These elements are built into the side skirt areas and upper and middle parts of the doors to increase structural rigidity and protect passengers in the event of a collision.



1. CONCEPT
AND SAFETY



2. MODELS



3. COLOURS AND
UPHOLSTERY



4. EXTERIOR DESIGN
AND WHEELS



5. INTERIOR DESIGN



6. MUSIC, COMMUNICATIONS
AND TECHNOLOGY



7. PERFORMANCE



8. ACCESSORIES



MINI COOPER CLUBMAN/ MINI COOPER D CLUBMAN

Unique from bonnet to boot. The front section, with its chrome-plated hexagonal grill and sporty air inlets, combines elegance and rugged good looks. The MINI Cooper D Clubman, with its larger air inlets and modified bonnet shape, looks even more potent. The harmonious design continues along the length of the side panels, all the way back to the upright C-pillars, and the Splitdoor at the rear reflects the strong roots and distinctive character of the MINI Clubman.



MINI COOPER S CLUBMAN

Every detail of the MINI Cooper S Clubman sends out an unmistakable signal: this is car with racing in its blood. The striking air intake on the bonnet, the wide front apron, the clear side direction indicators, the white third brake light, and the two chrome-plated exhaust tailpipes set at either side of the rear bumper tell the careful observer what the MINI Cooper S Clubman is all about – power.





1. CONCEPT
AND SAFETY

2. MODELS

3. COLOURS AND UPHOLSTERY

4. EXTERIOR DESIGN
AND WHEELS

5. INTERIOR DESIGN

6. MUSIC, COMMUNICATIONS
AND TECHNOLOGY

7. PERFORMANCE

8. ACCESSORIES

EXTERIOR COLOURS

The MINI Clubman comes in a wide choice of colours, including bold non-metallic shades and dazzling metallic options. These are juxtaposed with contrasting Silver or Black finishes for the roof, C-pillars and mirror caps. Over the following pages you will find full details of all the available colour combinations.

MINI COOPER CLUBMAN/MINI COOPER D CLUBMAN



U850
Pepper White



U851
Chili Red



YA58
Mellow Yellow



WA88
Hot Chocolate
Metallic



WA25
Astro Black
Metallic¹



WA67
British Racing Green
Metallic



WA63
Lightning Blue
Metallic¹



M900
Pure Silver
Metallic



WA60
Sparkling Silver
Metallic



WA93
Horizon Blue
Metallic²



WA94
Midnight Black
Metallic²



M857
Nightfire Red
Metallic

MINI COOPER S CLUBMAN



U850
Pepper White



U851
Chili Red



WA88
Hot Chocolate
Metallic



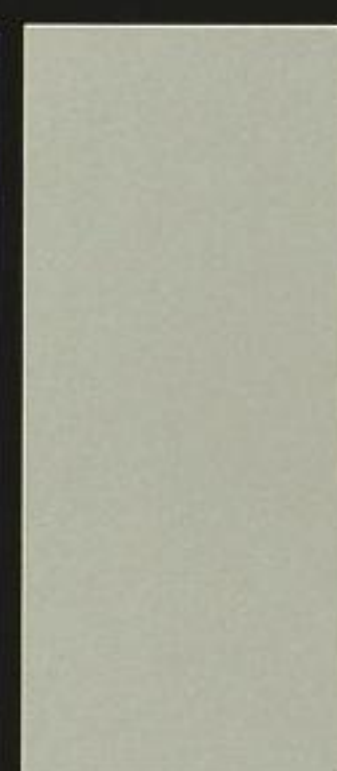
WA25
Astro Black
Metallic¹



WA67
British Racing Green
Metallic



WA63
Lightning Blue
Metallic¹



M900
Pure Silver
Metallic



WA60
Sparkling Silver
Metallic



WA93
Horizon Blue
Metallic²



WA94
Midnight Black
Metallic²



M871
Dark Silver
Metallic



WA59
Laser Blue
Metallic

EXTERIOR COLOURS

EXTERIOR COLOURS



1. CONCEPT
AND SAFETY

2. MODELS

3. COLOURS AND UPHOLSTERY

4. EXTERIOR DESIGN
AND WHEELS

5. INTERIOR DESIGN

6. MUSIC, COMMUNICATIONS
AND TECHNOLOGY

7. PERFORMANCE

8. ACCESSORIES

COLOUR COMBINATIONS

The MINI Clubman is available in an enormous choice of exterior colours, including the new and exclusive Hot Chocolate. And there are many different ways you can combine these with the roof and C-pillar colours on the different models. The mirror caps, by the way, are always the same colour as the roof. So what will it be: a body-colour roof with C-pillars in Black or Silver? Or roof and C-pillars all in Black? Or all in Silver? Take your time...

Pepper White



Black/Black

Mellow Yellow



Black/Black

Chili Red



Black/Black

Astro Black¹



Silver/Silver

British Racing Green



Black/Black

Lightning Blue¹



Black/Black

Pure Silver



Black/Black

Hot Chocolate



Black/Black

Sparkling Silver



Black/Black

Nightfire Red



Black/Black

Midnight Black²



Silver/Silver

Horizon Blue²



Black/Black



Silver/Silver



Silver/Silver



Silver/Silver



Silver/Silver



Silver/Silver



Silver/Silver



Pepper White/Black



Mellow Yellow/Black



Chili Red/Black



Astro Black/Silver



British Racing Green/Black



Lightning Blue/Black



Pepper White/Silver



Mellow Yellow/Silver



Chili Red/Silver



Astro Black/Silver



British Racing Green/Silver



Lightning Blue/Silver



Pure Silver/Black



Hot Chocolate/Black



Sparkling Silver/Black



Nightfire Red/Black



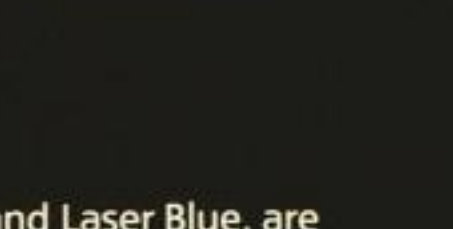
Midnight Black/Silver



Horizon Blue/Black



Two colours, Dark Silver and Laser Blue, are exclusive to the MINI Cooper S Clubman.



Dark Silver



Black/Black



Silver/Silver



Dark Silver/Black



Dark Silver/Silver

Laser Blue



Black/Black



Silver/Silver



Laser Blue/Black



Laser Blue/Silver

¹ Not expected to be available after fourth quarter of 2008.

² Expected to be available from first quarter of 2009.

1. CONCEPT
AND SAFETY

2. MODELS

3. COLOURS AND UPHOLSTERY

4. EXTERIOR DESIGN
AND WHEELS

5. INTERIOR DESIGN

6. MUSIC, COMMUNICATIONS
AND TECHNOLOGY

7. PERFORMANCE

8. ACCESSORIES



COLOUR LINE

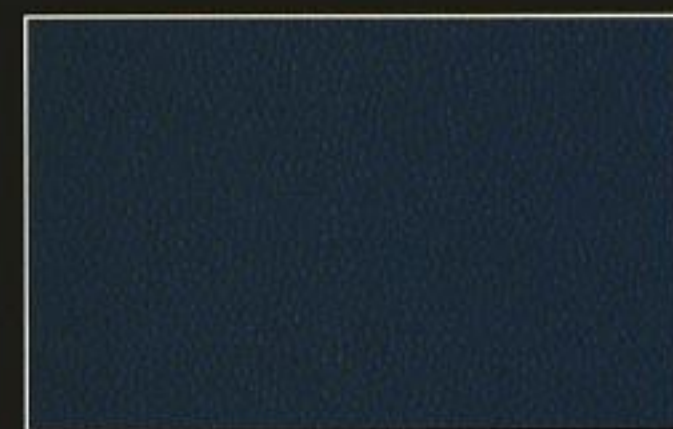
Not just any MINI Clubman, but your MINI Clubman. Because you have the chance to tailor the interior of the car precisely to your personal tastes. Depending on the upholstery, there are up to four Colour Line colours to choose from for the knee roll and the armrests in the doors.



4A7
Dark Grey



4A8
Cream White



4B8
Pacific Blue



4BA
Rooster Red

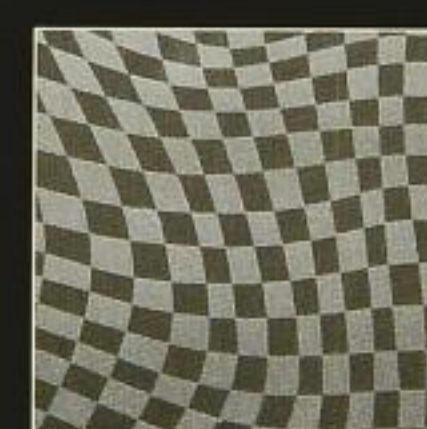


INTERIOR SURFACES

As well as the standard finishes – Fine White Silver for the MINI Cooper Clubman and MINI Cooper D Clubman, and Checkered for the MINI Cooper S Clubman – the interior surfaces (including the instrument panel and the elliptical door rings in the front and rear) are also available in a choice of other finishes, depending on the model and equipment specified. These range from cool Piano Black to classic English Oak. With its built-in loudspeaker trim, storage compartment in the door, and armrest, the ellipse contributes to the lounge atmosphere in the rear of the car.



As standard on MINI
Cooper Clubman/MINI
Cooper D Clubman
Fine White Silver



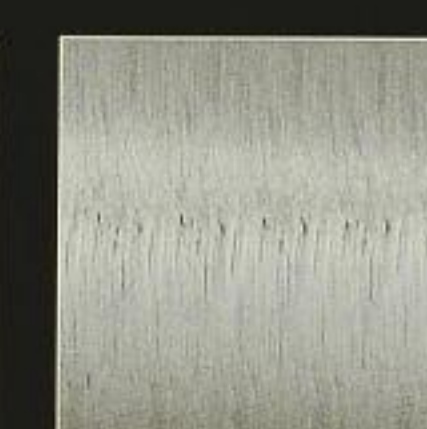
As standard on
MINI Cooper S Clubman
Checkered



4BD
Piano Black



4BC
Fluid Silver



4BF
Brushed Alloy
(genuine)



4BE
English Oak
(genuine)

1. CONCEPT
AND SAFETY

2. MODELS

3. COLOURS AND UPHOLSTERY

4. EXTERIOR DESIGN
AND WHEELS

5. INTERIOR DESIGN

6. MUSIC, COMMUNICATIONS
AND TECHNOLOGY

7. PERFORMANCE

8. ACCESSORIES

CLOTH UPHOLSTERY

A soft landing: the Cosmos cloth upholstery (as standard in the MINI Cooper Clubman and MINI Cooper D Clubman) is available for both the standard and sport seats, while the Checkered cloth upholstery (as standard in the MINI Cooper S Clubman) is available for the sport seat only. In either case, the interior colour is always Carbon Black.

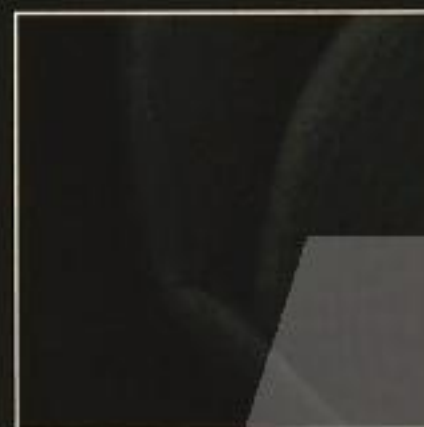
Cosmos cloth
APE1 Carbon Black



Interior colour
Carbon Black



Checkered cloth
ATE1 Carbon Black



Interior colour
Carbon Black



CLOTH/LEATHER UPHOLSTERY

Decisions, decisions: there are four different cloth/leather upholstery options to choose between for the sport seat, all of which go perfectly with the Carbon Black or Hot Chocolate interior colour.

Ray cloth/leather
FKE7 Hot Chocolate



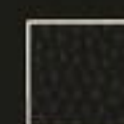
Interior colour
Hot Chocolate



Ray cloth/leather
FKE1 Carbon Black



Interior colour
Carbon Black



Ray cloth/leather
FKE2 Cream White



Interior colour
Carbon Black



Ray cloth/leather
FKE6 Rooster Red



Interior colour
Carbon Black



LEATHER UPHOLSTERY

Sitting pretty: the sport seat can be upholstered in genuine leather in Carbon Black or Tuscan Beige, while the sport seat with piping comes with the exclusive Lounge leather upholstery in Carbon Black or Hot Chocolate. The interior is colour-coordinated with the upholstery colour.

Punch leather
T8E1 Carbon Black



Interior colour
Carbon Black



Gravity leather
T6E4 Tuscan Beige



Interior colour
Tuscan Beige



Lounge leather
T9E1 Carbon Black



Interior colour
Carbon Black



Lounge leather
T9E7 Hot Chocolate



Interior colour
Hot Chocolate



STANDARD SEAT

Sit back and relax: you'll feel right at home in the comfortable standard seats, with their discreetly accentuated central panels. The only thing you won't like about them is that you eventually have to get out.



SPORT SEAT

In the box seat: the sport seats (as standard on the MINI Cooper S Clubman) feature side bolsters in a contrasting colour for extra lateral support when cornering at speed.



SPORT SEAT WITH PIPING

Take a seat: the sport seats with piping feature elegant stitching, and are as supportive as they are stylish.



The choice of interior colours available depends on the upholstery specified.



1. CONCEPT AND SAFETY

2. MODELS

3. COLOURS AND UPHOLSTERY

4. EXTERIOR DESIGN AND WHEELS

5. INTERIOR DESIGN

6. MUSIC, COMMUNICATIONS AND TECHNOLOGY

7. PERFORMANCE

8. ACCESSORIES

MINI COOPER CLUBMAN/MINI COOPER D CLUBMAN NON-METALLIC COLOURS

Exterior colour	Colour Line	Cosmos cloth	Ray cloth/leather				Gravity leather	Punch leather	Lounge leather	
		Standard seat Sport seat	Sport seat	Sport seat	Sport seat	Sport seat	Sport seat	Sport seat	Sport seat with piping	
	Upholstery	Carbon Black ■	Carbon Black ■	Cream White ■	Hot Chocolate ■	Rooster Red ■	Tuscan Beige ■	Carbon Black ■	Carbon Black ■	Hot Chocolate ■
	Interior colour	Carbon Black ■	Carbon Black ■	Carbon Black ■	Hot Chocolate ■	Carbon Black ■	Tuscan Beige ■	Carbon Black ■	Carbon Black ■	Hot Chocolate ■
	■ Dark Grey	■	■	■	—	■	—	■	■	—
	■ Cream White	■	■	■	■	■	■	■	■	■
	■ Pacific Blue	■	■	■	—	—	■	■	■	—
	■ Rooster Red	■	■	■	—	■	■	■	■	—
	■ Dark Grey	■	■	■	—	■	—	■	■	—
	■ Cream White	■	■	■	■	■	■	■	■	■
	■ Pacific Blue	—	—	—	—	—	—	—	—	—
	■ Rooster Red	■	■	■	—	■	■	■	■	—
	■ Dark Grey	■	■	■	—	—	—	■	■	—
	■ Cream White	■	■	■	■	—	■	■	■	■
	■ Pacific Blue	—	—	—	—	—	—	—	—	—
	■ Rooster Red	—	—	—	—	—	—	—	—	—

MINI COOPER CLUBMAN/MINI COOPER D CLUBMAN METALLIC COLOURS

Exterior colour	Colour Line	Cosmos cloth	Ray cloth/leather				Gravity leather	Punch leather	Lounge leather	
	■ Dark Grey	■	■	—	—	■	—	■	■	—
	■ Cream White	■	■	■	■	—	■	■	■	■
	■ Pacific Blue	—	—	—	—	—	—	—	—	—
	■ Rooster Red	—	—	—	—	—	—	—	—	—
	■ Dark Grey	■	■	■	—	■	—	■	■	—
	■ Cream White	■	■	■	■	—	■	■	■	■
	■ Pacific Blue	■	■	■	—	—	■	■	■	—
	■ Rooster Red	■	■	■	—	■	■	■	■	—
	■ Dark Grey	■	■	■	—	—	—	■	■	—
	■ Cream White	■	■	■	■	—	■	■	■	■
	■ Pacific Blue	—	—	—	—	—	—	—	—	—
	■ Rooster Red	—	—	—	—	—	—	—	—	—
	■ Dark Grey	■	■	■	—	—	—	■	■	—
	■ Cream White	■	■	■	■	—	■	■	■	■
	■ Pacific Blue	■	■	■	—	—	■	■	■	—
	■ Rooster Red	—	—	—	—	—	—	—	—	—

MINI COOPER CLUBMAN/MINI COOPER D CLUBMAN METALLIC COLOURS

Exterior colour	Colour Line	Cosmos cloth	Ray cloth/leather				Gravity leather	Punch leather	Lounge leather	
		Standard seat Sport seat	Sport seat	Sport seat	Sport seat	Sport seat	Sport seat	Sport seat	Sport seat with piping	
	Upholstery	Carbon Black ■	Carbon Black ■	Cream White ■	Hot Chocolate ■	Rooster Red ■	Tuscan Beige ■	Carbon Black ■	Carbon Black ■	Hot Chocolate ■
	Interior colour	Carbon Black ■	Carbon Black ■	Carbon Black ■	Hot Chocolate ■	Carbon Black ■	Tuscan Beige ■	Carbon Black ■	Carbon Black ■	Hot Chocolate ■
	■ Dark Grey	■	■	■	—	■	—	■	■	—
	■ Cream White	■	■	■	■	■	■	■	■	■
	■ Pacific Blue	■	■	■	—	—	■	■	■	—
	■ Rooster Red	■	■	■	—	■	■	■	■	—
	■ Dark Grey	■	■	■	—	■	—	■	■	—
	■ Cream White	■	■	■	■	■	■	■	■	■
	■ Pacific Blue	—	—	—	—	—	—	—	—	—
	■ Rooster Red	■	■	■	—	■	■	■	■	—
	■ Dark Grey	■	■	■	—	—	—	■	■	—
	■ Cream White	■	■	■	■	—	■	■	■	■
	■ Pacific Blue	—	—	—	—	—	—	—	—	—
	■ Rooster Red	—	—	—	—	—	—	—	—	—
	■ Dark Grey	■	■	■	—	■	—	■	■	—
	■ Cream White	■	■	■	■	■	■	■	■	■
	■ Pacific Blue	■	■	■	—	—	■	■	■	—
	■ Rooster Red	■	■	■	—	■	■	■	■	—
	■ Dark Grey	■	■	■	—	—	—	■	■	—
	■ Cream White	■	■	■	—	—	■	■	■	—
	■ Pacific Blue	—	—	—	—	—	—	—	—	—
	■ Rooster Red	—	—	—	—	—	—	—	—	—

■ Possible combination — Combination not possible

INTERIOR SURFACES

The above options come as standard with Fine White Silver interior trim finishers, but can also be combined with any of the four optional finishes. However, where Gravity leather, Lounge leather or Ray cloth/leather upholstery in Hot Chocolate is specified, the interior trim finishers are not available in Fine White Silver.

Fine White Silver

Fluid Silver

English Oak (genuine)

Piano Black

Brushed Alloy (genuine)

1. CONCEPT AND SAFETY

2. MODELS

3. COLOURS AND UPHOLSTERY

4. EXTERIOR DESIGN AND WHEELS

MINI COOPER S CLUBMAN NON-METALLIC COLOURS

Exterior colour	Colour Line	Checkered cloth	Ray cloth/leather				Gravity leather	Punch leather	Lounge leather	
		Sport seat	Sport seat	Sport seat	Sport seat	Sport seat	Sport seat	Sport seat	Sport seat with piping	
Upholstery		Carbon Black	Carbon Black	Cream White	Hot Chocolate	Rooster Red	Tuscan Beige	Carbon Black	Carbon Black	Hot Chocolate
Interior colour		Carbon Black	Carbon Black	Carbon Black	Hot Chocolate	Carbon Black	Tuscan Beige	Carbon Black	Carbon Black	Hot Chocolate
Pepper White	<ul style="list-style-type: none"> Dark Grey Cream White Pacific Blue Rooster Red 	■	■	■	—	■	—	■	■	—
Chili Red	<ul style="list-style-type: none"> Dark Grey Cream White Pacific Blue Rooster Red 	■	■	■	■	■	■	■	■	■

MINI COOPER S CLUBMAN METALLIC COLOURS

Exterior colour	Colour Line	Checkered cloth	Ray cloth/leather				Gravity leather	Punch leather	Lounge leather	
		Sport seat	Sport seat	Sport seat	Sport seat	Sport seat	Sport seat	Sport seat	Sport seat with piping	
Upholstery		Carbon Black	Carbon Black	Cream White	Hot Chocolate	Rooster Red	Tuscan Beige	Carbon Black	Carbon Black	Hot Chocolate
Interior colour		Carbon Black	Carbon Black	Carbon Black	Hot Chocolate	Carbon Black	Tuscan Beige	Carbon Black	Carbon Black	Hot Chocolate
Hot Chocolate	<ul style="list-style-type: none"> Dark Grey Cream White Pacific Blue Rooster Red 	■	■	■	■	■	■	■	■	■
Astro Black ¹	<ul style="list-style-type: none"> Dark Grey Cream White Pacific Blue Rooster Red 	■	■	■	■	■	■	■	■	■
British Racing Green	<ul style="list-style-type: none"> Dark Grey Cream White Pacific Blue Rooster Red 	■	■	■	■	■	■	■	■	■
Lightning Blue ¹	<ul style="list-style-type: none"> Dark Grey Cream White Pacific Blue Rooster Red 	■	■	■	■	■	■	■	■	■
Pure Silver	<ul style="list-style-type: none"> Dark Grey Cream White Pacific Blue Rooster Red 	■	■	■	■	■	■	■	■	■

5. INTERIOR DESIGN

6. MUSIC, COMMUNICATIONS AND TECHNOLOGY

7. PERFORMANCE

8. ACCESSORIES

MINI COOPER S CLUBMAN METALLIC COLOURS

Exterior colour	Colour Line	Checkered cloth	Ray cloth/leather				Gravity leather	Punch leather	Lounge leather	
		Sport seat	Sport seat	Sport seat	Sport seat	Sport seat	Sport seat	Sport seat	Sport seat with piping	
Upholstery		Carbon Black	Carbon Black	Cream White	Hot Chocolate	Rooster Red	Tuscan Beige	Carbon Black	Carbon Black	Hot Chocolate
Interior colour		Carbon Black	Carbon Black	Carbon Black	Hot Chocolate	Carbon Black	Tuscan Beige	Carbon Black	Carbon Black	Hot Chocolate
Sparkling Silver	<ul style="list-style-type: none"> Dark Grey Cream White Pacific Blue Rooster Red 	■	■	■	■	■	■	■	■	■
Horizon Blue ²	<ul style="list-style-type: none"> Dark Grey Cream White Pacific Blue Rooster Red 	■	■	■	■	■	■	■	■	■
Midnight Black ²	<ul style="list-style-type: none"> Dark Grey Cream White Pacific Blue Rooster Red 	■	■	■	■	■	■	■	■	■
Dark Silver	<ul style="list-style-type: none"> Dark Grey Cream White Pacific Blue Rooster Red 	■	■	■	■	■	■	■	■	■
Laser Blue	<ul style="list-style-type: none"> Dark Grey Cream White Pacific Blue Rooster Red 	■	■	■	■	■	■	■	■	■

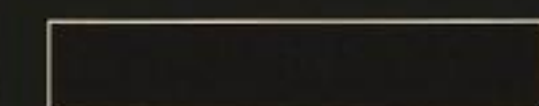
■ Possible combination — Combination not possible

INTERIOR SURFACES

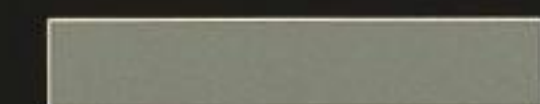
The above options come as standard with Checkered interior trim finishers, but can also be combined with any of the four optional finishes. However, where Gravity leather, Lounge leather or Ray cloth/leather upholstery in Hot Chocolate is specified, the interior trim finishers are not available in the Checkered finish.



Checkered



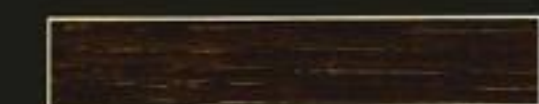
Piano Black



Fluid Silver



Brushed Alloy (genuine)



English Oak (genuine)



1. CONCEPT AND SAFETY

2. MODELS

3. COLOURS AND UPHOLSTERY

4. EXTERIOR DESIGN AND WHEELS



The roof of the MINI Clubman is available in **body colour**, **Silver** or **Black** (all no-cost options). With a body-colour roof, the C-pillars can be specified in Silver or Black, while if the roof is Silver or Black, the C-pillars are the same colour. The **mirror caps** are always the same colour as the roof.

Bonnet stripes in **Black** or **Silver** are available as an option on the MINI Cooper Clubman, MINI Cooper D Clubman and MINI Cooper S Clubman. The stripes match the roof colour, and so are not available in conjunction with a body-colour roof.



As standard on MINI Cooper Clubman



As standard on MINI Cooper S Clubman



As standard on MINI Cooper D Clubman

5. INTERIOR DESIGN

6. MUSIC, COMMUNICATIONS AND TECHNOLOGY

7. PERFORMANCE

8. ACCESSORIES



If the MINI Clubman has a Black roof, the **mirror caps** are also painted **Black**. The exterior mirrors are electrically adjustable, and heating is available as an option.

There is also the option of **mirror caps** in **body colour** (in conjunction with roof in body colour, no-cost option).

Where a Silver roof is specified for the MINI Clubman, the **mirror caps** come in **Silver** too. The exterior mirrors are electrically adjustable, and heating is available as an option.

The electric folding function means that both **exterior mirrors** can be **folded away electrically** and folded back out again at the touch of a button. Both mirrors and the windscreen washer jets are heated.



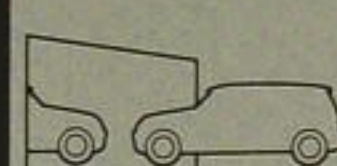
Optional on MINI Cooper Clubman



Optional on MINI Cooper S Clubman



Optional on MINI Cooper D Clubman



1. CONCEPT AND SAFETY

2. MODELS

3. COLOURS AND UPHOLSTERY

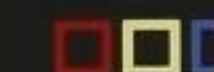
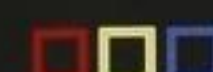
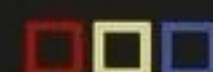
4. EXTERIOR DESIGN AND WHEELS

5. INTERIOR DESIGN

6. MUSIC, COMMUNICATIONS AND TECHNOLOGY

7. PERFORMANCE

8. ACCESSORIES



The MINI Cooper Clubman and the MINI Cooper D Clubman are fitted as standard with **5-Star Spooler** light-alloy rims, in the 5.5 J x 15-inch size with 175/65 R 15 tyres.

The optional **5-Star Blaster** light-alloy rims come in the 6.5 J x 16-inch size with 195/55 R 16 runflat tyres.

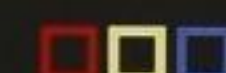
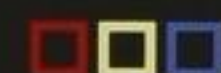
The expressively styled **Crown Spoke** light-alloy rims* come in the 7 J x 17-inch size with 205/45 R 17 runflat tyres.

The MINI Cooper S Clubman comes with the **S-Winder** light-alloy rims in the 6.5 J x 16-inch size and 195/55 R 16 runflat tyres as standard.

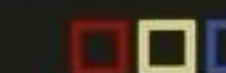
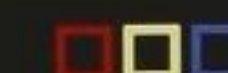
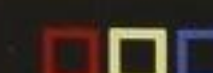
The optional **Bridge Spoke** light-alloy rims* come in the 6.5 J x 16-inch size with 195/55 R 16 runflat tyres.

The **Web Spoke** light-alloy rims feature a composite design, the two parts being bolted together. They come in the 7 J x 17-inch size, with 205/45 R 17 runflat tyres, and are also available in a two-tone Anthracite finish.

Exclusive to the MINI Clubman: the **5-Star Pace Spoke** light-alloy rims come in the 7 J x 17-inch size with 205/45 R 17 runflat tyres.

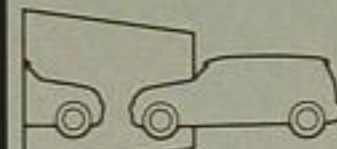


As standard on MINI Cooper Clubman As standard on MINI Cooper S Clubman As standard on MINI Cooper D Clubman



Optional on MINI Cooper Clubman Optional on MINI Cooper S Clubman Optional on MINI Cooper D Clubman

* These light-alloy rims are also optionally available in Black (expected to be available from first quarter of 2009).



1. CONCEPT AND SAFETY

2. MODELS

3. COLOURS AND UPHOLSTERY

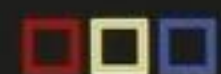
4. EXTERIOR DESIGN AND WHEELS

5. INTERIOR DESIGN

6. MUSIC, COMMUNICATIONS AND TECHNOLOGY

7. PERFORMANCE

8. ACCESSORIES



Depending on the model, the **Chrome Line Exterior** for the MINI Clubman may include chrome plating of the radiator grille slats, a chrome edging for the lower front grille, chrome surrounds for the fog lights, and a chrome bumper inlay. On the MINI Cooper S Clubman, the two grilles in the rear bumper also have chrome edgings.

Sun protection glazing reduces the build-up of heat in the interior of the car caused by strong sunlight, making things more comfortable for the occupants. Where this option is specified, the glass is visibly darker from the B-pillar backwards (including the rear windows).

Optional **chrome-plated mirror caps** are available in combination with any colour of roof. On the MINI Cooper Clubman and MINI Cooper D Clubman, this option also includes **chrome-plated bumper guards**.

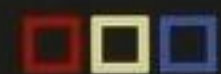
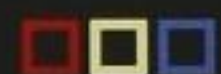
The **white direction indicators** option includes white indicator glasses in the front headlight units, side direction indicators (as standard on the MINI Cooper S Clubman) and rear light units.

The **roof rails*** for the MINI Clubman are the ideal platform for mounting integrated multifunctional carrier systems to the roof of the vehicle. Matt Black in colour, they fit seamlessly into the lines of the roof, and work harmoniously together with the overall design. Maximum roof load is 75 kilograms.

The **roof spoiler** is perfectly in keeping with the sporty looks of the MINI Clubman. It matches the colour of the roof, and integrates seamlessly into its lines.

The round **exhaust tailpipe finisher** on the **MINI Cooper Clubman** and **MINI Cooper D Clubman** is chrome-plated and has a muscular look.

On the **MINI Cooper S Clubman**, there are two chrome-plated **exhaust tailpipe finishers**. Situated at either side of the rear apron, these ensure the car looks as unique as it sounds.



As standard on MINI Cooper Clubman



As standard on MINI Cooper S Clubman



As standard on MINI Cooper D Clubman



Optional on MINI Cooper Clubman



Optional on MINI Cooper D Clubman



Optional on MINI Cooper S Clubman





1. CONCEPT AND SAFETY

2. MODELS

3. COLOURS AND UPHOLSTERY

4. EXTERIOR DESIGN AND WHEELS

5. INTERIOR DESIGN

6. MUSIC, COMMUNICATIONS AND TECHNOLOGY

7. PERFORMANCE

8. ACCESSORIES



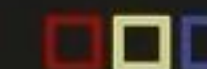
The **interior surfaces** of the **MINI Cooper Clubman** and **MINI Cooper D Clubman** are finished as standard in **Fine White Silver**. The elliptical door rings come in Carbon Black, and the revolution counter, speedometer, air vents and gear lever are all edged in Silver.

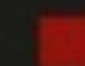


In the **MINI Cooper S Clubman**, the **interior surfaces** are finished as standard in a **Checkered** design, as are the elliptical door rings, while the door grips come in Carbon Black. The revolution counter, speedometer, air vents, gearshift lever, front and rear cup holders, door handles and loudspeakers set in the door trims are all edged in Silver.

As an option, the **interior surfaces** and door grips are available in **English Oak** (illustrated left). Where this option is specified, the elliptical door ring is in Piano Black. Alternatively you can opt for interior surfaces in **Brushed Alloy** (illustrated right), with the door rings in Grey Silver Matt. Other trim elements included with this option are as for the Checkered finish.

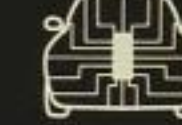
Other options for the **interior surfaces** and elliptical door rings are **Fluid Silver** (illustrated left) and **Piano Black** (illustrated right). Other trim elements included with these options are as for the Checkered design interior surfaces.

With the **Colour Line** option, the knee roll and the armrest in the front door and rear of the car come in a choice of four colours: **Cream White** (illustrated left), **Rooster Red** (illustrated right), Dark Grey and Pacific Blue.



 As standard on MINI Cooper Clubman
  As standard on MINI Cooper S Clubman
 As standard on MINI Cooper D Clubman

 Optional on MINI Cooper Clubman
  Optional on MINI Cooper S Clubman
 Optional on MINI Cooper D Clubman



1. CONCEPT AND SAFETY

2. MODELS

3. COLOURS AND UPHOLSTERY

4. EXTERIOR DESIGN AND WHEELS

5. INTERIOR DESIGN

6. MUSIC, COMMUNICATIONS AND TECHNOLOGY

7. PERFORMANCE

8. ACCESSORIES

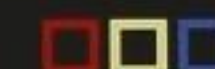


Where **Fluid Silver** interior surfaces are specified, the **elliptical door rings** in the front and rear are in the same colour, while the door grips are in **Carbon Black**.

The interior surfaces are also available in stylish **Piano Black**, with matching **Piano Black** elliptical door rings front and rear, and door grips in **Carbon Black**.

If you opt for the **Brushed Alloy** finish for the interior surfaces, the **elliptical rings** in the front doors and in the rear come in **Grey Silver Matt**, and the door grips in **Brushed Alloy**.

With the traditional **English Oak** option, the interior surfaces and door grips are finished in fine wood, complemented perfectly by the use of **Piano Black** for the **elliptical rings** in the front doors and in the rear.



As standard on MINI Cooper Clubman As standard on MINI Cooper S Clubman
As standard on MINI Cooper D Clubman



If the optional **Chrome Line Interior** is specified, the instruments, air vents in the instrument panel, ring on the gear lever knob, and door handles are all edged in chrome.

On the MINI Cooper S Clubman, and on all models with an optional interior surface finish or upholstery in leather or cloth/leather, the chrome trim is also applied to the door handles, the speakers set in the door trims, and the central cup holder in the rear.



Optional on MINI Cooper Clubman Optional on MINI Cooper S Clubman
Optional on MINI Cooper D Clubman

1. CONCEPT
AND SAFETY

2. MODELS

3. COLOURS AND
UPHOLSTERY

4. EXTERIOR DESIGN
AND WHEELS

5. INTERIOR DESIGN

6. MUSIC, COMMUNICATIONS
AND TECHNOLOGY

7. PERFORMANCE

8. ACCESSORIES



The **2-spoke standard steering wheel** features a built-in 2-stage driver airbag. The horn is sounded by pressing the impact absorber.

The **3-spoke sport steering wheel** in leather is an option on all MINI Clubman models. It sits comfortably in the hand, for even more agile handling.



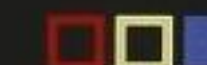
The **2-spoke leather steering wheel** (as standard on the MINI Cooper S Clubman) features a built-in 2-stage driver airbag. The horn is sounded by pressing the impact absorber. This option also includes a gear lever knob in leather.

A **3-spoke sport steering wheel with a wooden rim** (supplied with a gear lever knob in wood veneer) is available as an option. It is fitted with the multi-function option.



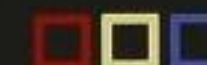
The **standard seat** for driver and front-seat passenger is manually position-adjustable, and upholstered in cloth. It features a storage pocket on the backrest, and a backrest memory function. The driver's seat is also height-adjustable.

The **sport seat** for driver and front-seat passenger is also available in **Lounge leather**, with special **pipings** and particularly elegant stitching. The illustration shows the Hot Chocolate colour option.



The **sport seat** for driver and front-seat passenger includes a storage net on the backrest, and a backrest memory function. It is manually position-adjustable, and upholstered in cloth, or, as an option, in leather or a cloth/leather combination. The driver's seat is also height-adjustable. Excellent lateral support when cornering at speed is provided by the raised side bolsters.

Both front seats are equipped with an **easy entry function**. Simply tip the seat and it will automatically slide forward for easier access to the rear seats; slide it back again and move the backrest upright, and the backrest memory function means it will click back into its original position.

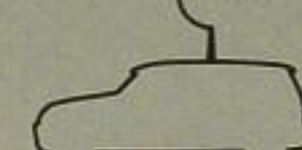


As standard on MINI Cooper Clubman As standard on MINI Cooper S Clubman
As standard on MINI Cooper D Clubman



Optional on MINI Cooper Clubman Optional on MINI Cooper S Clubman
Optional on MINI Cooper D Clubman





1. CONCEPT AND SAFETY

2. MODELS

3. COLOURS AND UPHOLSTERY

4. EXTERIOR DESIGN AND WHEELS

5. INTERIOR DESIGN

6. MUSIC, COMMUNICATIONS AND TECHNOLOGY

7. PERFORMANCE

8. ACCESSORIES

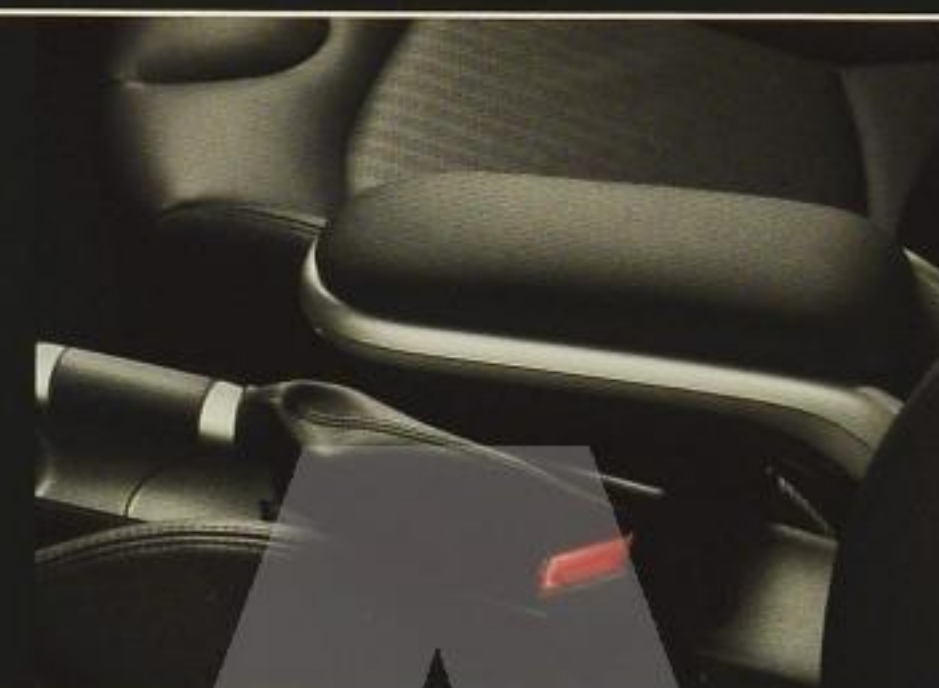


The **rear backrest** can be divided (50:50 split) and the two halves folded down separately, using a release handle in the luggage compartment. This means that three people can travel in comfort even if they have bulky luggage. Alternatively, the entire rear backrest can be folded down, making loading easier and increasing luggage space to as much as 930 litres. (Illustrations show the 2-seat rear seat bench, available as a no-cost option.)

The rear seat bench comes as standard with **three seats and three headrests**, allowing two adults and a child (weighing up to 49 kilograms) to travel in comfort in the back.

The two halves of the rear backrest fold forward separately. The optional **flat luggage compartment floor** and the angle adjustment of the rear seat bench also make loading and unloading easier. Individual pieces of luggage can be secured to the four lashing eyelets.

The **storage package** includes a storage compartment in the instrument panel on the passenger side, and a storage net in the front passenger footwell. In the luggage compartment, there is a floor net, a 12-volt socket, and an umbrella holder.



The **headliner** is available in **Anthracite** as an option on all MINI Clubman models.

The **centre armrest** in the front folds away, and also incorporates a storage compartment.

The optional **smoker's package** consists of a cigarette lighter and a removable ashtray. Where this option is not specified, all MINI models come as standard with two cup holders and a storage compartment in the centre console, plus a further three cup holders in the rear.

The **light package** includes handle-area illumination in the door trim, reading and footwell lights in the front, illuminated vanity mirrors, a central interior light in the headliner and colour-adjustable (orange/blue) ambient lighting for the door handles, storage compartments in the doors, B-pillar trim and soft-light on the instrument panel.

The **door sill finishers** in stainless steel are engraved with the model name.



As standard on MINI Cooper Clubman



As standard on MINI Cooper S Clubman



As standard on MINI Cooper D Clubman



Optional on MINI Cooper Clubman



Optional on MINI Cooper D Clubman



Optional on MINI Cooper S Clubman



1. CONCEPT AND SAFETY

2. MODELS

3. COLOURS AND UPHOLSTERY

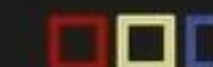
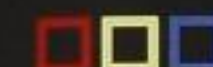
4. EXTERIOR DESIGN AND WHEELS

5. INTERIOR DESIGN

6. MUSIC, COMMUNICATIONS AND TECHNOLOGY

7. PERFORMANCE

8. ACCESSORIES



The large **speedometer** is centrally positioned in the instrument panel, and incorporates various warning lights and the fuel gauge.

The **MINI navigation system** features a 16:9 monitor in the round central instrument, and includes the Radio Boost CD, on-board computer and a speedometer around the outside. It directs you to your destination via voice instructions, directional arrows and/or on-screen maps.



The circular **revolution counter** is mounted on the middle of the steering column. The upper part of the display can be switched between outside temperature, current time and current speed, while the lower part shows such information as the trip distance. It also includes the Shift Point Display, telling you which gear is the most economical at any given moment.

The **on-board computer** tells you your range, current and average fuel consumption, and average speed at the touch of a button.



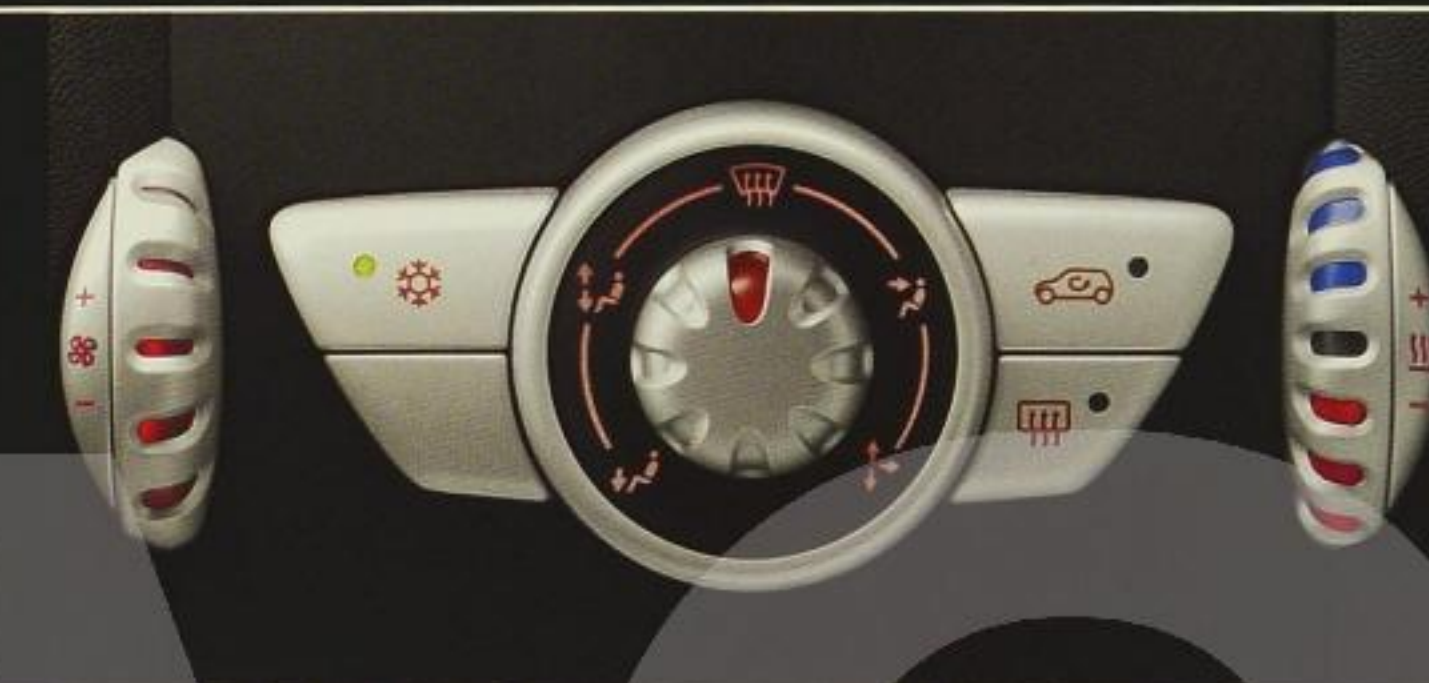
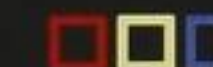
Once the key is in the ignition, the **Start/Stop button** can be used to switch the engine on or off.

The **Condition Based Service (CBS)** system warns you when the next oil change or general service is due, with a digital countdown of the distance to the next service appearing in the lower part of the display in the revolution counter.



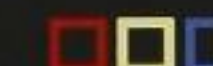
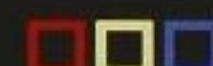
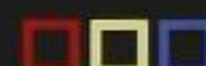
The large opening of the **glass roof** lets in plenty of fresh air, and gives a real sense of space. Electronic controls operate the front/rear vent function, and there is also a remote control function. Two detachable roller sunblinds built into the centre section of the roof protect the occupants from bright sunlight.

Automatic air conditioning rapidly adjusts the interior temperature to the desired level, and then keeps it constant. An integrated active carbon filter protects passengers against unpleasant odours.



The **air conditioning** system with microfilter means passengers can enjoy their ideal interior temperature, whatever the conditions outside. The amount and distribution of conditioned air can be individually adjusted.

The **visibility package** ensures drivers can always see clearly. It includes a heated windscreen, a rain sensor, a rear-view mirror with automatic anti-dazzle function, and automatic driving light control.



■ As standard on MINI Cooper Clubman
 ■ As standard on MINI Cooper S Clubman
 ■ As standard on MINI Cooper D Clubman

□ Optional on MINI Cooper Clubman
 □ Optional on MINI Cooper S Clubman
 □ Optional on MINI Cooper D Clubman

1. CONCEPT
AND SAFETY

2. MODELS

3. COLOURS AND
UPHOLSTERY

4. EXTERIOR DESIGN
AND WHEELS

5. INTERIOR DESIGN

6. MUSIC, COMMUNICATIONS
AND TECHNOLOGY

7. PERFORMANCE

8. ACCESSORIES



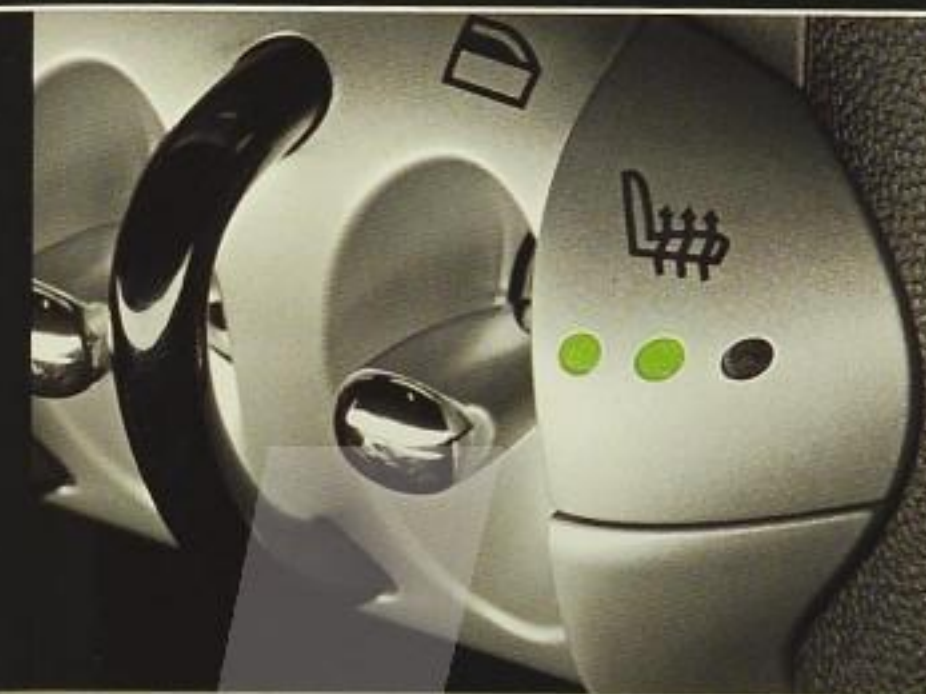
The perfect sounds for any journey: fitted as standard, the **Radio MINI CD** includes an RDS tuner with scan function, permanent clock display and FM, MW and LW reception, and a built-in CD player with intro scan function and fast forward/rewind. The system also features six speakers, and an AUX-IN connection for MP3 players.

An MP3-compatible **CD changer** is available as an option. This is built into the glove compartment, and can hold up to six CDs.



The **Radio Boost CD** has all the features of the Radio MINI CD, plus a 2-column display, MP3 compatibility, and controls for optional equipment such as the CD changer, Bluetooth mobile phone preparation, DAB tuner and antenna diversity for optimum reception.

The **hi-fi loudspeaker system** uses a 230-watt 8-channel digital amplifier and ten loudspeakers to deliver an outstanding listening experience, with powerful bass and brilliant treble.



The **seat heating** for driver and front-seat passenger offers a choice of three temperature settings, and will be particularly appreciated on cold days.

When the **rain sensor** is activated, it automatically switches on the windscreen wipers when necessary, and adjusts their speed to how hard it is raining. The built-in light sensor automatically switches on the driving lights when needed in dark or twilight conditions.



The **rear-view mirror with automatic anti-dazzle function** dims the light from the headlights of a following vehicle if this reaches a certain level of intensity.



The **garage door opener** makes life that little bit easier. The programmable remote control can be used to open and close your gates or garage door without getting out of the car.

The **comfort access system** allows you to lock and unlock the car without even having to touch the key. Simply having it in your pocket or handbag is enough. You can also switch the ignition on and off keylessly, simply by pressing the Start/Stop button.



As standard on MINI Cooper Clubman As standard on MINI Cooper S Clubman
As standard on MINI Cooper D Clubman



Optional on MINI Cooper Clubman Optional on MINI Cooper S Clubman
Optional on MINI Cooper D Clubman



1. CONCEPT
AND SAFETY

2. MODELS

3. COLOURS AND
UPHOLSTERY

4. EXTERIOR DESIGN
AND WHEELS

5. INTERIOR DESIGN

6. MUSIC, COMMUNICATIONS
AND TECHNOLOGY

7. PERFORMANCE

8. ACCESSORIES



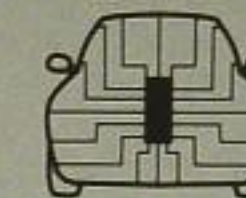
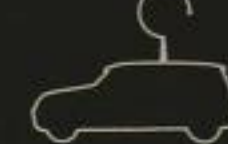
The **AUX-IN** connection allows an external audio source such as an MP3 player to be connected to the car's stereo system.

A **multifunction** option is available for the 3-spoke leather steering wheel, which allows drivers to operate the cruise control, radio and phone without taking their hands off the wheel.

The optional **Bluetooth hands-free kit with USB audio interface** connects wirelessly to Bluetooth-enabled mobile phones. The USB audio interface supports the connection of an iPod, USB memory stick or MP3 player. Users can select tracks stored on the device by album, artist, genre etc. via the radio or navigation display. The **Bluetooth mobile phone preparation with USB audio interface** option also includes a 3-spoke multifunction sport steering wheel in leather, featuring cruise control, and a centre armrest. The **extended connectivity of the music player in the mobile phone** option allows Bluetooth-enabled mobile phones to be plugged into the armrest via a snap-in adapter (available separately), so that the music stored on them can be played through the vehicle's loudspeakers. For more information about the compatibility of various mobile phones and the availability of snap-in adapters, speak to your authorized MINI dealer.



■ As standard on MINI Cooper Clubman
 ■ As standard on MINI Cooper S Clubman
■ As standard on MINI Cooper D Clubman

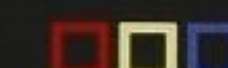
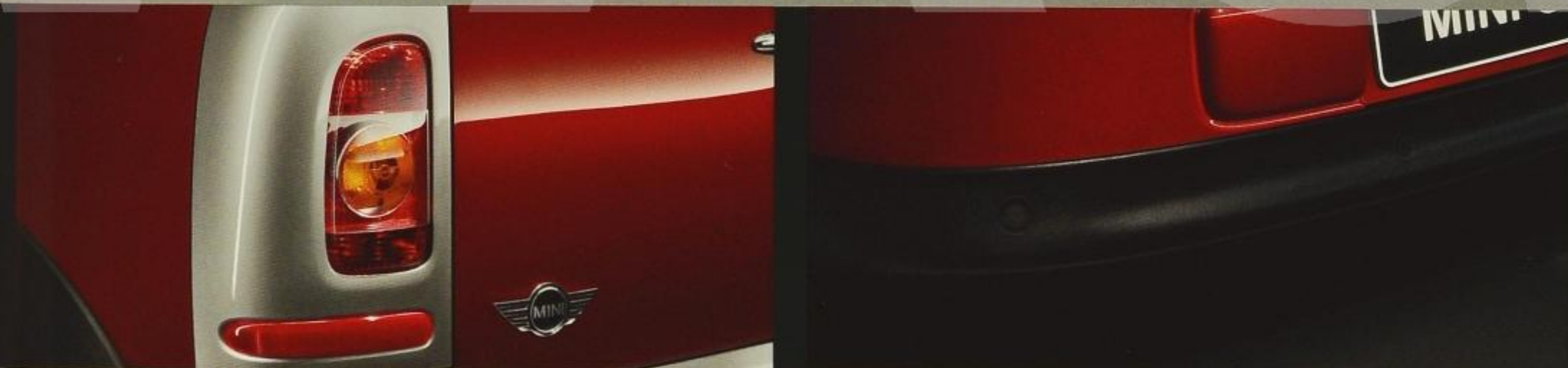


The optional **bi-xenon headlights** for low and full-beam settings, with headlight beam-throw control and headlight washer system, offer particularly powerful illumination.

The **fog lights** are built into the side light housing in the front apron, and offer improved safety when visibility is poor.

The **rear fog light** is built into the left rear light unit.

Park Distance Control (PDC) at the rear makes it easier to park and manoeuvre in tight spaces. An acoustic signal (and a visual display, if the navigation system is also fitted) communicates the distance between the MINI Clubman and any obstacle to the driver.



■ Optional on MINI Cooper Clubman
 ■ Optional on MINI Cooper S Clubman
■ Optional on MINI Cooper D Clubman



1. CONCEPT AND SAFETY

2. MODELS

3. COLOURS AND UPHOLSTERY

4. EXTERIOR DESIGN AND WHEELS

5. INTERIOR DESIGN

6. MUSIC, COMMUNICATIONS AND TECHNOLOGY

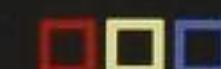
7. PERFORMANCE

8. ACCESSORIES



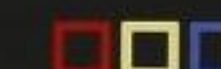
For looks that are worthy of the performance. The **aerodynamic package** makes even a MINI sportier and more distinctive. It includes a lowered front apron and a large central air inlet that hints at the amount of air required – and the amount of power provided – by the engine.

The package also includes a sporty rear apron, which emphasizes the car's wide track.



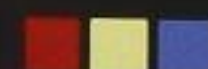
The optional **6-speed automatic transmission** with Steptronic makes gear changes easier, and – in Steptronic mode – decidedly sporty.

The **6-speed manual transmission** has a pleasingly light feel, and allows quick, precise changes, facilitating a sporty driving style.



As well as a selector lever, the 6-speed automatic transmission also comes with **two shift paddles on the steering wheel**. These can be operated with both hands on the wheel, for faster, safer gear changes.

Pressing the **Sport button** further increases the responsiveness of the steering and accelerator pedal, for a genuine track-style driving experience. On models with automatic transmission, the sport button reduces shift times.



■ As standard on MINI Cooper Clubman
 ■ As standard on MINI Cooper S Clubman
■ As standard on MINI Cooper D Clubman

□ Optional on MINI Cooper Clubman
 □ Optional on MINI Cooper S Clubman
□ Optional on MINI Cooper D Clubman



1. CONCEPT AND SAFETY

2. MODELS

3. COLOURS AND UPHOLSTERY

4. EXTERIOR DESIGN AND WHEELS

5. INTERIOR DESIGN

6. MUSIC, COMMUNICATIONS AND TECHNOLOGY

7. PERFORMANCE

8. ACCESSORIES*

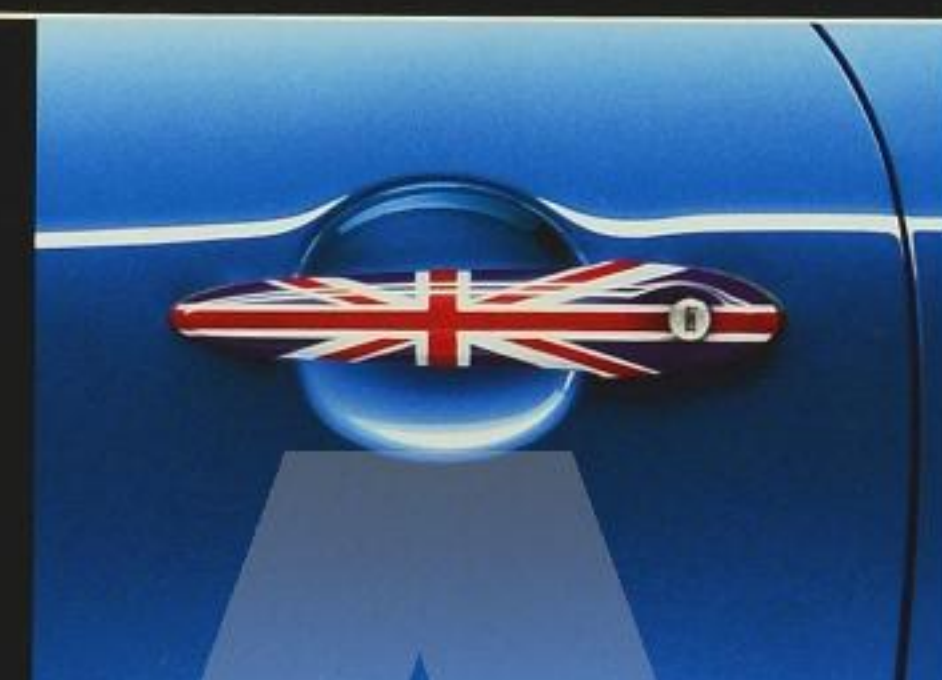


The **Checkered Flag** design gives the MINI Clubman a unique look. It is available for the **exterior mirrors**, the **rear-view mirror housing**, the **door handles**, the **side scuttles**, and the **roof** (a version is also available for the **glass roof with vent function**). **Sport stripes** and **additional headlights** complete the sporty effect.

Show your true colours, with the **roof stickers** for the MINI Clubman. As well as the classic **Union Jack** and **Checkered Flag** designs and **MINI lettering**, you can also opt for a **heliport design** in either Black or White, a visual expression of the car's energy and exuberance.



You can't get enough of it: the **Union Jack** design for the **mirror caps** and **rear-view mirror housing**.



The **door handle** is also available in a **Union Jack** or **Black Jack** design.



The **side scuttles** are available in a choice of finishes, including the **Union Jack** and **Black Jack** designs.

With a diameter of 90 mm, the muscular stainless steel **exhaust tailpipe finisher** on the MINI Clubman features a polished, chrome-plated finish, contributing to the car's sporty looks.

The **chrome-plated air intake** gives the front of the MINI Cooper S Clubman an even more imposing appearance.





1. CONCEPT AND SAFETY

2. MODELS

3. COLOURS AND UPHOLSTERY

4. EXTERIOR DESIGN AND WHEELS

5. INTERIOR DESIGN

6. MUSIC, COMMUNICATIONS AND TECHNOLOGY

7. PERFORMANCE

8. ACCESSORIES*



The **R108 Multispoke light-alloy wheel** comes in the 7 J x 17-inch size with 205/45 R 17 runflat tyres.



The **R85 S-Spoke light-alloy wheel** features a chrome finish, and comes in the 7 J x 17-inch size, with 205/45 R 17 runflat tyres.



The **R99 Double Spoke light-alloy wheel** is available in Grey Metallic, Silver (not shown) or a polished finish (not shown). It comes in the 7 J x 17-inch size, with 205/45 R 17 runflat tyres.



The **R90 Cross Spoke composite light-alloy wheel** features a 2-part construction with titanium bolts, and comes in the 7 J x 17-inch size with 205/45 R 17 runflat tyres. Available in Silver, Anthracite (not shown) or Black.



The genius is in the detail: **valve caps** with a **Union Jack** or **Checkered Flag** design.



Leather trims in the distinctive **Hot Chocolate** colour make a striking contrast to the **Checkered Flag interior trim finishers**. They are available for the **leather steering wheel**, the **gear lever knob** and **gaiter** or **selector lever grip** and **gaiter**, and **handbrake grip** and **gaiter**. All trims also available in Tuscan Beige.

The **glove compartment dividers** make it easier to organize the contents of your glove compartment, so you can keep items such as CDs, iPods, vehicle manuals and keys separate. The size of the divisions can be adjusted, and an elasticated band is included.



Enjoy a MINI adventure in sound: the **iPod interface** allows an iPod or iPhone to be connected to the car's audio system. The device is controlled via the MINI joystick, MINI Radio or multifunction steering wheel, and artist, album, genre and song title information is displayed on the radio display or on-board monitor. The iPod or iPhone remains safely out of sight in the storage compartment in the instrument panel.

The comfortable **centre armrest** for the driver and front-seat passenger features a spacious storage compartment.





1. CONCEPT AND SAFETY

2. MODELS

3. COLOURS AND UPHOLSTERY

4. EXTERIOR DESIGN AND WHEELS

5. INTERIOR DESIGN

6. MUSIC, COMMUNICATIONS AND TECHNOLOGY

7. PERFORMANCE

8. ACCESSORIES*



The practical rubber **storage tray** makes optimum use of the space in the centre console, so small items can be kept safely and yet within easy reach. With special slots for credit cards and coins.

It means business: the high-quality woven **Urban floor mat**, with a pinstripe design in Cream White or Dark Grey.



Perfect colour coordination: the **gear lever knob** and **gear lever gaiter** can be specified in **Hot Chocolate leather** as an option, and complemented with a **handbrake grip** and **handbrake gaiter** in the same colour. Both trims also available in Tuscan Beige.

The **Cosmopolitan floor mat** is made of high-quality soft velour. It features a MINI logo and a reflective Nubuck border.



The **rubber floor mat** features raised edges to protect the footwell from dirt and moisture. Available in Carbon Black with the MINI logo or MINI Cooper S lettering.



The **MINI Portable navigation system** uses a GPS receiver, voice instructions, touch-screen operation and two and three-dimensional maps to guide you safely to your destination. It also features an MP3 player, an image viewer and conversion tables. With USB connection, anti-theft protection and lithium ion batteries.

The lockable **touring cycle holder** for the roof rack base support system allows a bicycle with a frame diameter of up to 80 mm to be transported on the roof. Up to four touring cycle holders can be mounted with single-key locking.



Featuring a Checkered Flag design, the **protective bootspace cover** protects the entire luggage compartment of the MINI Clubman, and is versatile enough to be used whether or not the rear seat bench is folded down. Made of a hard-wearing waterproof material, when not in use it can be folded up and stored in the compact bag supplied.

The **MINI roof box** can easily be mounted on the **roof rack base support system**, and has a capacity of 350 litres. It features central locking for greater convenience. The base support system can also be used to mount a variety of other attachments, allowing items such as bicycles to be carried on the roof.



1. CONCEPT
AND SAFETY

2. MODELS

3. COLOURS AND
UPHOLSTERY

4. EXTERIOR DESIGN
AND WHEELS

5. INTERIOR DESIGN

6. MUSIC, COMMUNICATIONS
AND TECHNOLOGY

7. PERFORMANCE

8. ACCESSORIES*



JOHN COOPER WORKS.

A genuine racing experience: the John Cooper Works components in Carbon. A clear lacquered Carbon air intake and Carbon mirror caps underline the sporting credentials of the MINI Cooper S Clubman, and the effect is further enhanced by John Cooper Works side scuttles and 18-inch light-alloy wheels with runflat tyres.



Taking the racing line: the steering wheel, gear lever knob and handbrake grip in Alcantara with Carbon elements.



The perfect finishing touch: interior trim finishers in Carbon, plus steering wheel, gear lever knob and handbrake grip in leather with Carbon trims.

A real eyeful: the R109 Double Spoke composite light-alloy wheel. A sport brake with perforated discs and red brake calipers is also available.

Cast as a single piece: the powerfully styled R95 Star Spoke light-alloy wheel, in the 18-inch size with 205/40 R 18 runflat tyres.

Burnished or Matt Black: the 18-inch R105 Double Spoke light-alloy wheel with 205/40 R 18 runflat tyres comes in a choice of two finishes.

The rigid suspension cross-brace in the engine compartment makes the MINI more stable.



TECHNICAL DATA.

ENGINE ^{1,2}		MINI COOPER CLUBMAN	MINI COOPER D CLUBMAN	MINI COOPER S CLUBMAN
Cylinders/layout/valves per cylinder		4/in-line/4	4/in-line/4	4/in-line/4
Displacement	cm ³	1598	1560	1598
Stroke/bore	mm	85.8/77.0	88.3/75.0	85.8/77.0
Max. output/max. revs	kW/hp/rpm	88/120/6000	80/110/4000	128/175/5500
Max. torque/revs	Nm/rpm	160/4250	240 (260) ³ /1750-2000	240 (260) ³ /1600-5000
Compression ratio/recommended fuel	:1	11.0/91-98 RON	18.0/diesel	10.5/91-98 RON
TRANSMISSION¹				
Standard transmission ratios	I/II:1	13.99/7.80 [17.02/9.73]	12.26/6.93 [14.90/8.73]	12.06/7.77 [14.90/8.73]
	III/IV:1	5.20/3.98 [6.38/4.74]	4.42/3.23 [5.73/4.27]	5.41/4.15 [5.73/4.27]
	V/VI/R:1	3.41/2.97/13.68 [3.53/2.81/13.93]	2.67/2.21/11.97 [3.14/2.48/11.76]	3.46/2.98/11.78 [3.14/2.48/11.76]
Final drive ratio	:1	4.35 [4.10]	3.71 [3.68]	3.65 [3.68]
PERFORMANCE¹				
Max. speed	km/h	201 [195]	193 [188]	224 [219]
Acceleration 0-100 km/h	sec	9.8 [10.9]	10.4 [10.9]	7.6 [7.8]
Acceleration 80-120 km/h (4th/5th gear)	sec	10.2/12.7	7.9/10.2	5.9/7.6
FUEL CONSUMPTION^{1,2}				
Urban	ltr/100 km	7.1 [9.2]	4.9 [6.6]	8.0 [9.8]
Extra-urban	ltr/100 km	4.5 [5.1]	3.6 [4.2]	5.3 [5.4]
Combined	ltr/100 km	5.5 [6.6]	4.1 [5.1]	6.3 [7.0]
CO ₂ emissions	g/km	132 [159]	109 [136]	150 [168]
Tank capacity, approx.	ltr	40	40	50
Range	km	725 [605]	975 [780]	790 [710]

WEIGHT ¹		MINI COOPER CLUBMAN	MINI COOPER D CLUBMAN	MINI COOPER S CLUBMAN
Unladen EU ⁴	kg	1220 [1260]	1250 [1280]	1280 [1305]
Max. permitted	kg	1645 [1685]	1675 [1705]	1690 [1715]
Permitted load	kg	500	500	485
Permitted axle load front/rear	kg	830 [865]/850	875 [905]/840	865 [890]/855
Permitted trailer load, max. 12% gradient	kg	750	750	-
Permitted roof load	kg	75	75	75
WHEELS				
Tyre dimensions front/rear		175/65 R15 84H	175/65 R15 84H	195/55 R16 87V RSC
Wheel dimensions front/rear		5.5 J x 15 light alloy	5.5 J x 15 light alloy	6.5 J x 16 light alloy
ELECTRICAL SYSTEM				
Battery capacity/location	AH	46/front	70/front	46/front
Alternator output	A	120	154	120
	W	1680	2156	1680

¹ All figures relate to vehicles with the standard 6-speed manual transmission. Figures in square brackets relate to vehicles with the 6-speed automatic transmission.

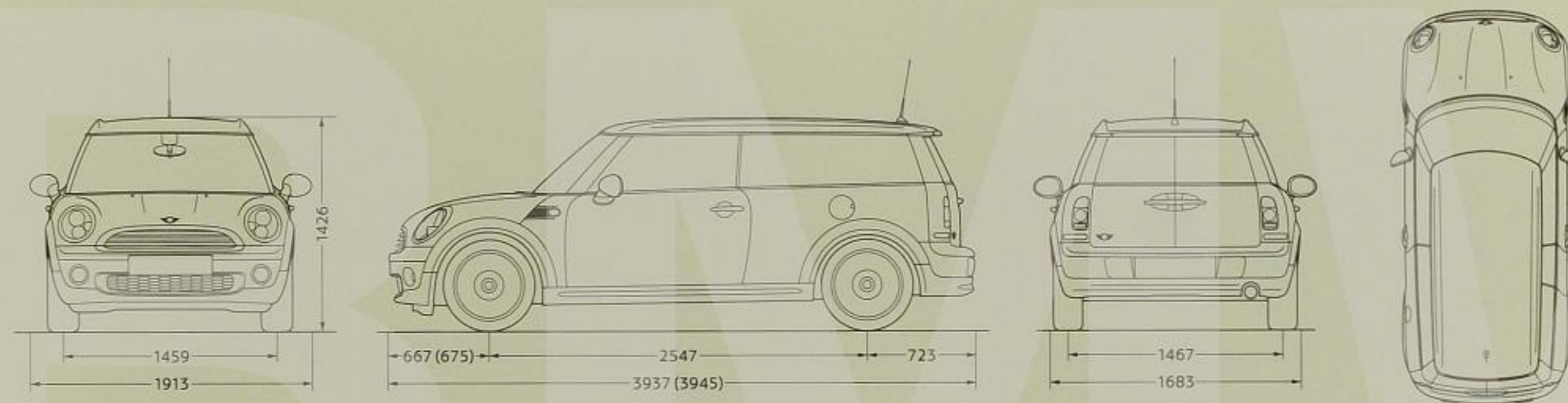
² All MINI models comply with the EU4 exhaust emissions standard. Fuel consumption is determined in accordance with the EU driving cycle, made up of approximately one third urban and two thirds extra-urban driving (based on the distance covered). CO₂ emissions are measured in addition to fuel consumption as such.

³ With overboost function.

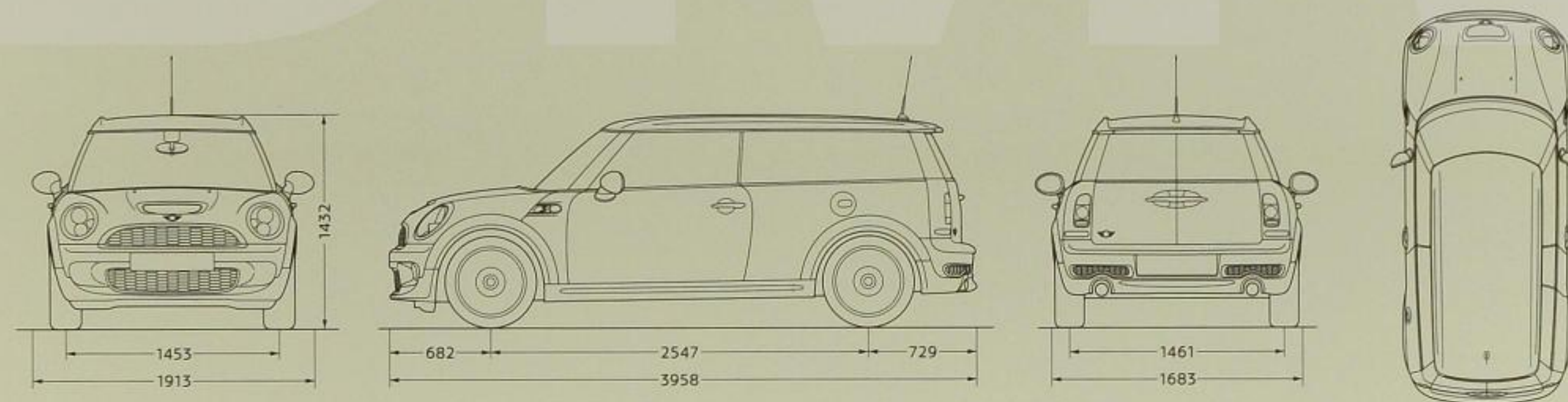
⁴ The figure quoted includes a 90% tank filling, 68 kg for the driver and 7 kg for luggage. Unladen weight applies to vehicles with standard equipment. Optional equipment may increase this figure.

DIMENSIONAL DRAWINGS.

MINI COOPER CLUBMAN. (MINI COOPER D CLUBMAN).



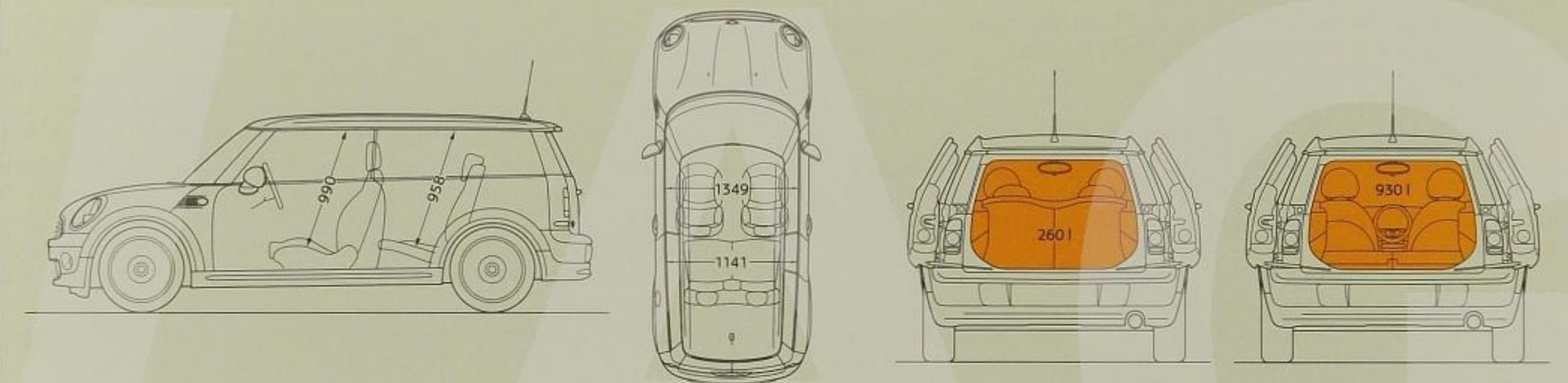
MINI COOPER S CLUBMAN.



All figures in millimetres.

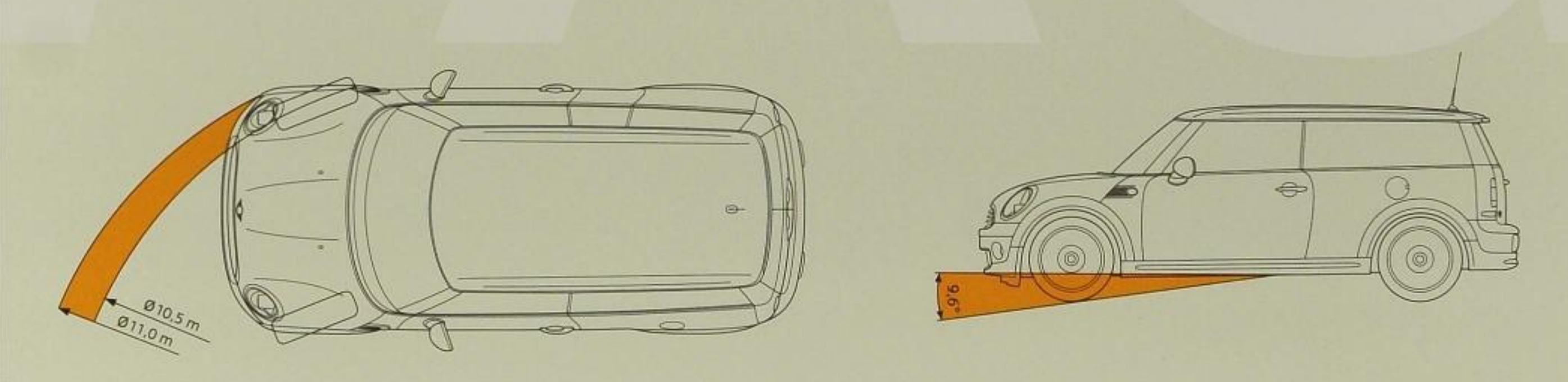
Even the tallest people will find the MINI surprisingly spacious, with 990 mm between seat and ceiling in the front, and 958 mm in the rear. And with 1,349 mm of elbow room in the front and 1,141 mm in the back, passengers will have plenty of personal space even when the car is full.

The luggage capacity varies from 260 litres to 930 litres with the rear backrest folded down.



As well as being a sporty performer on the open road, the MINI is also highly agile in a tight spot, with a turning circle of just 11.0 metres.

A ramp brakeover angle of 9.6 degrees prevents the car from grounding, and makes underground car parks a much less stressful experience.



MINI SERVICE. KEEP IT MINI.

MINI SERVICE – DESIGNED FOR PEACE OF MIND.

Even a MINI occasionally needs some downtime. However, we appreciate that you don't want to leave your pride and joy even in the capable hands of a **MINI Service Centre** any more often than is absolutely necessary, and so the MINI was specifically designed to make it quick and easy to maintain and repair.

The aim of MINI Service is to ensure you and your MINI are looked after at all times, and a global network of **MINI Service Centres** is the key to achieving this. Their highly trained experts know your car inside out, and using computerized diagnostic tools and information systems, they offer a fast, high-quality service.

An important component of this is the intelligent key supplied with every MINI model. Using a KeyReader, the staff at your MINI Service Centre can read basic data stored on this, such as the chassis number, mileage and the status of the **CBS (Condition Based Service) display**, which is located in the revolution counter or speedometer, depending on equipment levels. CBS uses sensors to detect when oil changes and brake services are necessary. Brake fluid status and the distance to the next scheduled test of roadworthiness or emissions test and service are shown on the display.

This system means that you never miss an appointment, while the detailed information about the precise condition of your car helps avoid unnecessary costs.

Unlikely, but not impossible: in the event that your MINI does suffer a breakdown, peace of mind is still guaranteed by **MINI Mobile Service**. Telephone support from highly trained MINI technicians is available 24 hours a day, 365 days a year, and if that doesn't resolve your problem, our people on the ground will do all they can to get your MINI back on the road.

If this doesn't do the trick, the extensive MINI Mobile Care range of mobility services will make sure you still get where you've got to go. For more details of what is included in MINI Mobile Care, who is entitled to it, and where it is valid, please contact your MINI Service Centre, or visit our website at www.MINI.com.

If you require extra cover against accident and theft, once again your MINI Service Centre will be delighted to advise you on the services available in your country. All the phone numbers you need can be found in the separate "Contact" booklet.

And so you don't have to worry about unexpected costs – for servicing, maintenance and (with certain packages) wear-and-tear repairs – we offer **MINI Service Inclusive**, the perfect way to ensure your MINI is properly looked after. A variety of packages are available, giving you free access to all the services included for a specified number of years, or up to a specified number of kilometres.

Keep it MINI. Treat your MINI with the attention and affection it deserves, and make sure you only ever use Original MINI Parts. These proven high-quality components will ensure your MINI continues to give you the fun it was designed to. All **Original MINI Parts** are covered by the same warranties as the car itself, and their long-term availability is guaranteed – Original MINI Parts will be available from all authorized MINI dealers, anywhere in the world, for 15 years after production of the model in question has ceased. Using Original MINI Parts will also help preserve the car's unique appeal, and protect against depreciation – so your finances stay in the same great shape as your MINI.

For further information on MINI Service and what it includes, contact your authorized MINI dealer or MINI Service Centre. Alternatively visit our website at www.MINI.com/service.



MINI FINANCIAL SERVICES.

DON'T DREAM. DRIVE! THE BENEFITS OF MINI FINANCIAL SERVICES.

Admittedly, dreaming about a MINI is pretty exciting. But it can't compare with the fun you'll get from actually driving a MINI. The right financial package helps you make the road from dream to reality a short one. MINI Financial Services make sure that you can choose the short cut to having your own MINI which best suits your lifestyle, your budget and the MINI you've chosen.

Three roads, one destination. MINI Leasing, MINI Finance, MINI Select. Each of these three solutions has the twin goals of making your MINI dream quickly come true as well as enhancing the fun you get from living with your MINI. Each of our three service models has its own specific advantages. You decide which solution you are most comfortable with.

To be precise, MINI Leasing is not one model but many. Because you decide the exact terms and conditions yourself: at the start of the contract you opt either to simply pay by instalments or to make a down payment, thus lowering the monthly instalments you pay. You also decide the term of the lease and your mileage allowance.

MINI Finance is the financing form for you if you want to own your MINI. When purchasing your MINI you arrange the size of your down payment and the monthly instalment just as individually as your MINI's equipment.

MINI Select leaves every option open to you: you decide at the end of the contract's term whether you:

- give your MINI a parting hug and, if you wish, say hello to a new MINI there and then.
- continue to take out finance on your MINI because you can't bear to be parted from it.
- pay us the outstanding sum on your MINI so that it becomes 100% your own.

Question: can you make the thrilling MINI experience even more exciting? Answer: no. But you can make sure you avoid unwanted and unpleasant surprises. With an insurance policy which is perfectly tailored to MINI. To accompany your financial package, MINI Financial Services offers insurance packages precisely geared to your personal wishes and needs:

- car insurance to protect you and your MINI if the worst comes to the worst.
- letters of protection (Schutzbrieife) to safeguard you against all adverse circumstances.
- payment protection insurance to guarantee the payments on your MINI if life takes an unexpected turn.

What next? Why not arrange a personal meeting with your local MINI dealer? The F&I manager and the sales staff there have an in-depth knowledge of all MINI Financial Services products and looking forward to making your MINI dream come true.*

* To learn more about MINI Financial Services, our leasing, finance and insurance offers, and find out who offers these services in your country, go to www.MINI.com or contact your MINI dealer direct. Details of services may differ from country to country.





Illustration shows MINI Cooper S Convertible with original MINI accessories.

WARRANTY.

Every MINI is supplied with a 2-year unlimited mileage dealer warranty. (This excludes wear-and-tear parts.) Every MINI also comes with a 12-year anti-corrosion warranty, which covers the vehicle against rusting of the body panels. This warranty is dependent on any previous damage to the vehicle body or under-body (e.g. stone impact damage, scratches, dents, accident damage or other damage caused by environmental factors) having been correctly repaired in accordance with current MINI guidelines. The painted surfaces of the car are covered by a 3-year warranty. This excludes any damage to painted surfaces caused by external or environmental factors.

RECYCLING.

At every stage, from design to disassembly, recycling is central to the MINI philosophy. For example, all the materials used in its manufacture were selected because they can be used in a sustainable and environmentally friendly way. And every MINI is built to be easily and economically recycled when its driving days are finally done. We have been working on this approach since 1994 at the BMW Group Recycling and Disassembly Centre in Munich, the only facility of its kind. Your authorized MINI dealer will also be pleased to advise you on the disposal of your old vehicle.

BMW AG

The models, standard and optional equipment and combinability of options in this brochure relate to cars supplied by BMW AG for the German market. The availability of standard and optional equipment, and the combinability of options, may vary from country to country within the European Union for all models. For detailed information about the situation in your country, please contact your MINI dealer. Subject to change in design and equipment.

The people, quotes and events described in this flyer are entirely fictitious and any resemblance to actual persons, living or dead, is purely coincidental.

© BMW AG, Munich, Germany. Not to be reproduced, wholly or in part, without written permission of BMW AG, Munich.

For more information, visit www.MINI.com