



MINI CABRIO.



ALWAYS OPEN.

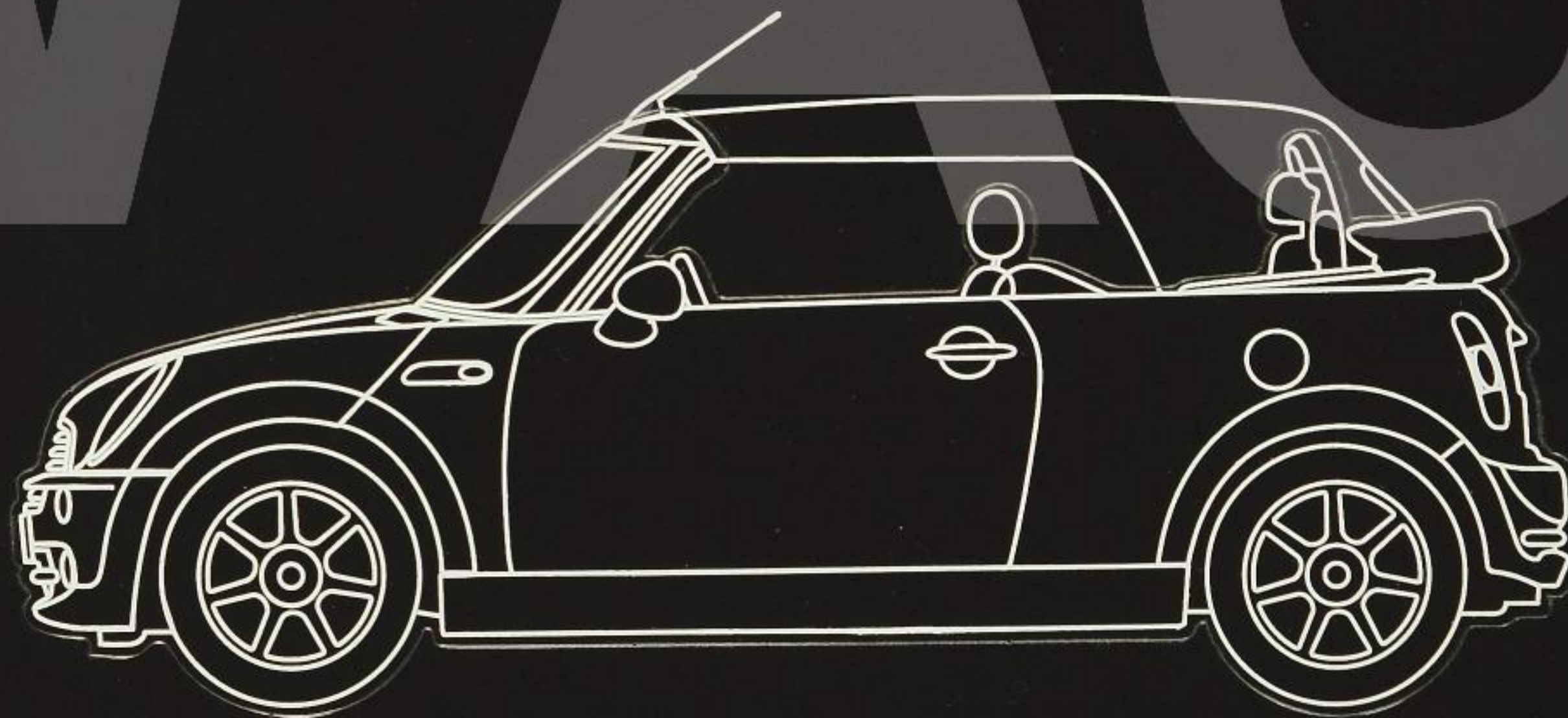
WELCOME TO THE GRAND OPENING OF THE NEW MINI CABRIO.

You could write pages and pages about how great the MINI Cabrio is.
And in fact, we've done just that.

To find out more, just follow these simple instructions.

1. Push out your MINI Cabrio.
2. Use it to open the perforated pages of this brochure.
3. Read all about the MINI Cabrio.

≡ THIS ONE'S YOURS ALREADY.



DARE YOU GO TOPLESS?

Above you only sky.
Below you only tarmac.
Enjoy them both, in the new
MINI Cabrio – a car that's all
about bringing things together.
Things like freedom and go-
kart feeling. Or wide track and
a long wheelbase.



OPENS IN JUST 15 SECONDS.



00"



15"

SOFT TOP WITH Z-SHAPED FOLDING MECHANISM: a neat idea. The convertible soft top is cunningly designed so that it also functions as a continuously variable retracting sunroof that can be operated when the car is moving at up to 120 km/h, with a maximum opening of 40 centimetres. The space-saving Z-shaped folding mechanism means the roof is exceptionally compact when stowed, and no dedicated boot space is needed.

PLENTY OF ROOM: four friends out for a spin, or a couple going on holiday with all their luggage – either way, the MINI Cabrio's got it covered. Plenty of space in the back, and a whole world of headroom for all four seats.



« **HANDY:** the Easy Load function. When the soft top is up, the tailgate folds down, and the back of the roof swings up. This Easy Load system gives a wide opening, taking the hassle out of loading and unloading – very useful when the car can hold as much as 605 litres of luggage.

SLEEK: the elliptical exterior mirrors. In body colour on the MINI Cooper Cabrio and MINI Cooper S Cabrio. »



« **FULLY AUTOMATIC:** the soft top and the sunroof function open and close at the touch of a button.

BRIGHT: the chrome-ringed headlights. Combining classical design with the latest lighting technology behind a glass cover. The ultra-powerful Xenon lights (optional) almost turn night into day. »



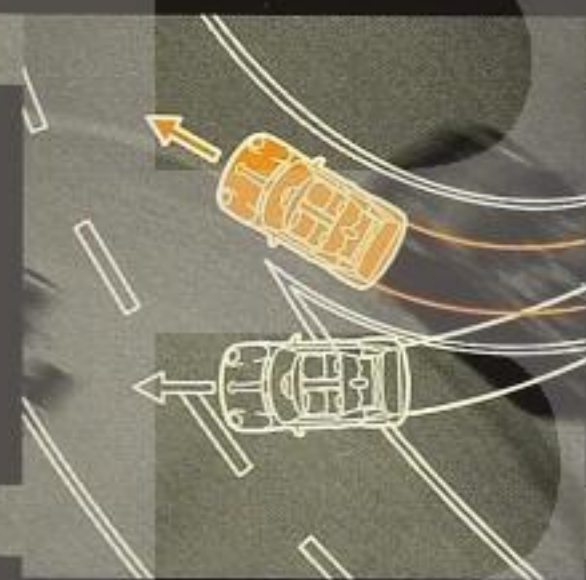
In safe hands: with four airbags as standard, a reinforced body and a rigid aluminium roll-over bar.



MEET YOUR NEW BODYGUARD.



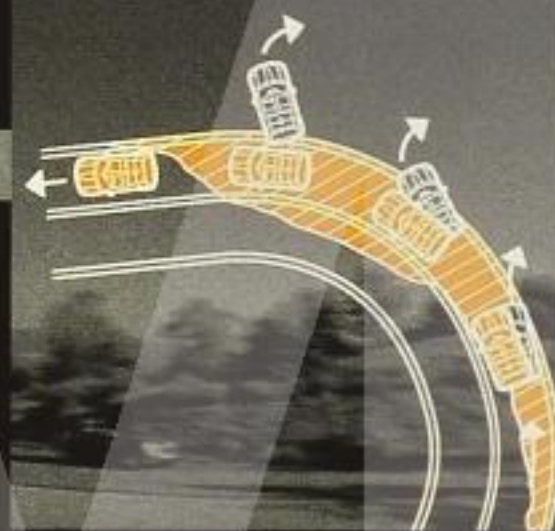
NO RISK. JUST FUN.



⌘ **DSC:**
Dynamic Stability Control (optional) counteracts vehicle instability by intervening in the engine management system and applying braking force to individual wheels at front and rear as necessary.



⌘ **ROLL-OVER BAR:**
made of high-strength aluminium and integrated with the rear headrests and restraint system to provide optimum protection for back-seat passengers.



⌘ **ASC+T:**
Automatic Stability Control + Traction (as standard on the MINI Cooper S Cabrio) prevents the front (drive) wheels from spinning, for improved traction when accelerating and pulling off.



⌘ **AIRBAGS:**
times four. Driver and front-passenger airbags protect the head and upper body in the event of a head-on collision, while front head/thorax side airbags significantly reduce the risk of injuries to the head, chest and pelvic areas in side impacts.

Braking system with ABS, Cornering Brake Control (CBC) and Electronic Braking force Distribution (EBD) as standard: four disc brakes and an electronic Anti-lock Braking System guarantee a safer driving experience, while CBC improves braking performance in corners and prevents understeer. EBD manages the distribution of braking force between front and rear axles electronically to ensure the shortest possible stopping distances.

A GREAT VIEW. AND A GREAT SIGHT.



There's so much to see in the MINI Cabrio. Looking is almost as much fun as driving.

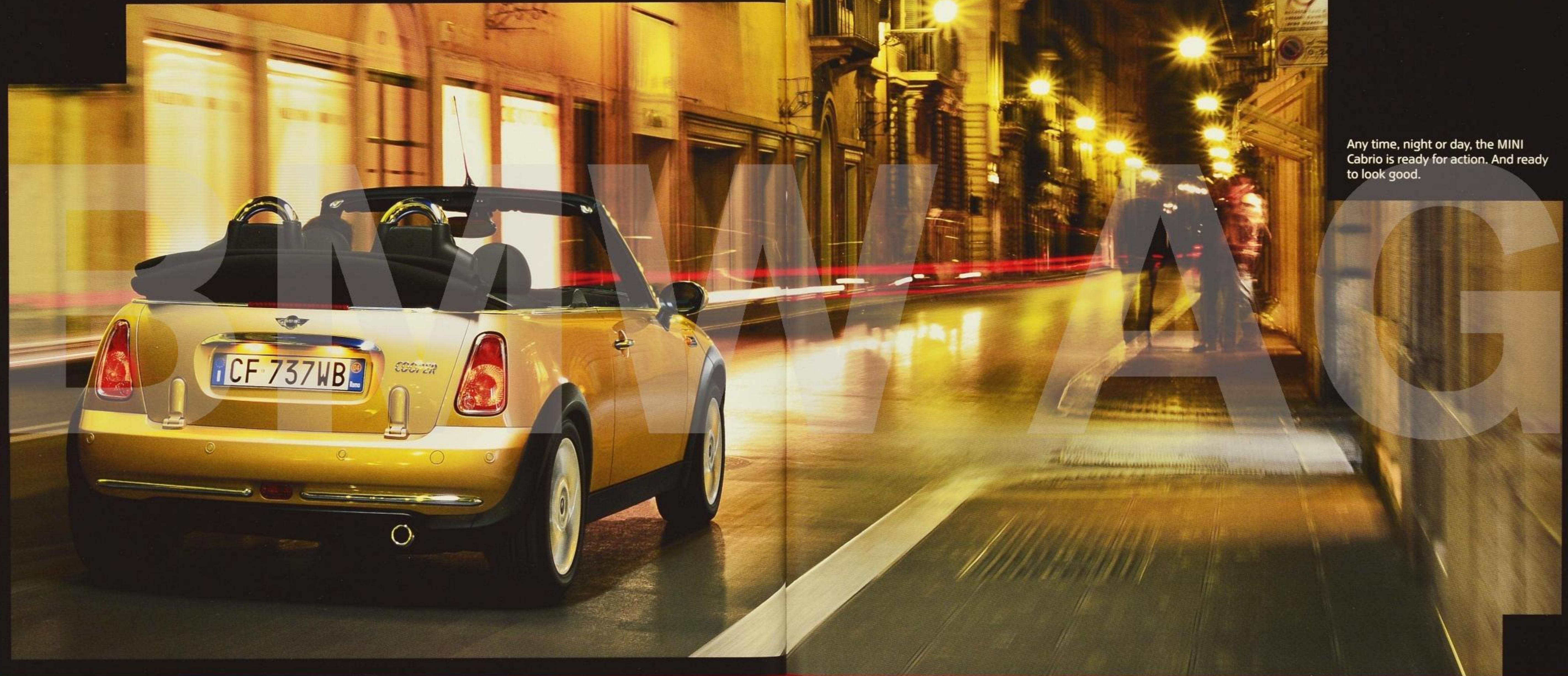


FREE YOUR MIND.



What makes you want to read this brochure so much that you're prepared to go through the rigmarole of tearing open the pages before you can read them? Maybe it's because you're open-minded. Intrigued by the unknown, not afraid of it. An individualist. The sort of person who would drive a MINI Cabrio.

REMEMBER THOSE MIDNIGHT VISITS TO THE FRIDGE?
THESE DAYS, YOU PREFER THE GARAGE.



Any time, night or day, the MINI
Cabrio is ready for action. And ready
to look good.

SHOW YOUR TRUE COLOURS.



Liquid Yellow

Chili Red

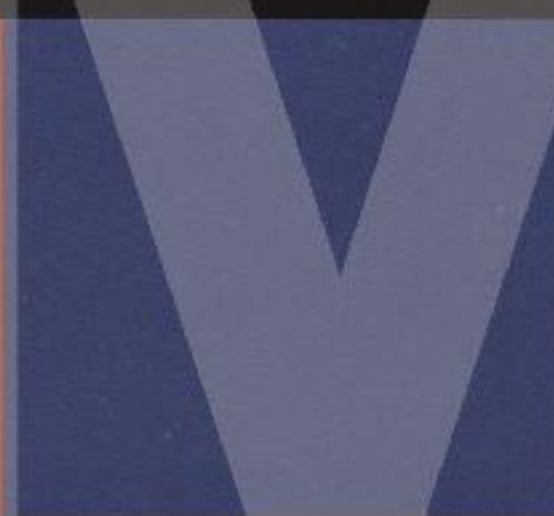
Black

SOLID COLOURS

Strong primary colours that make a bold statement.



Hot Orange



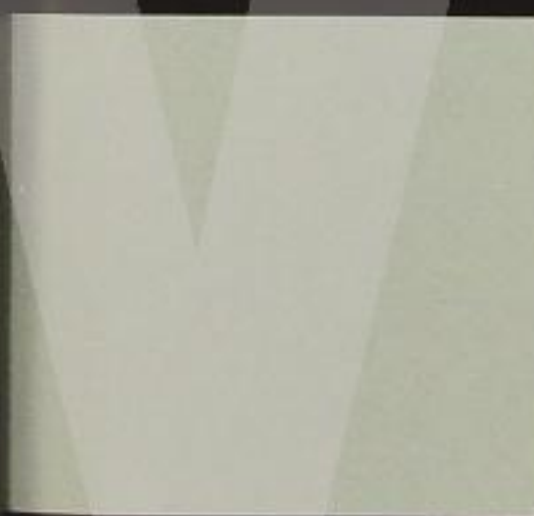
Cool Blue (effect colour)



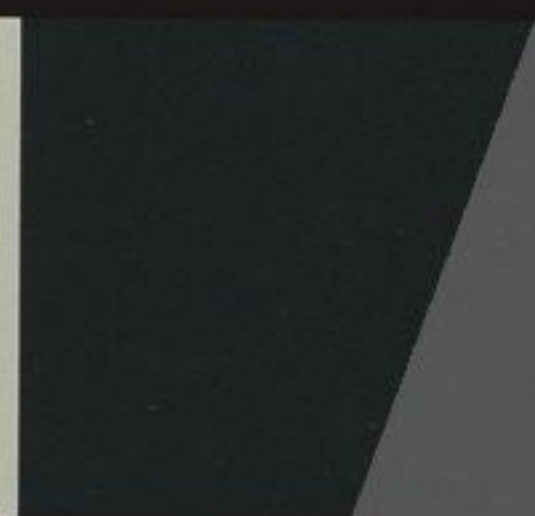
Solid Gold ¹



Dark Silver ²



Pure Silver



British Racing Green



Black-Eye Purple



Hyper Blue ²

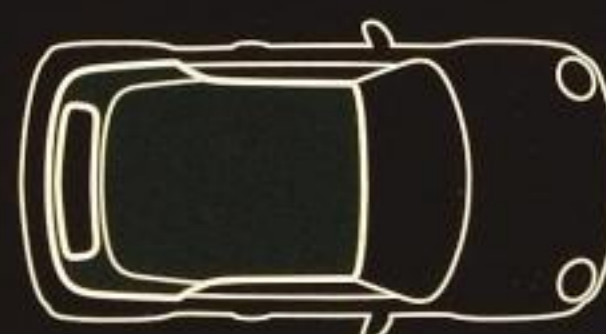
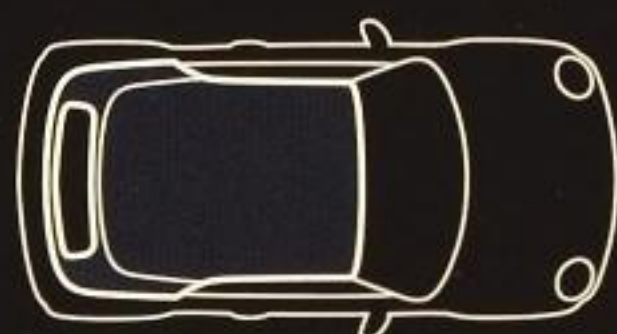
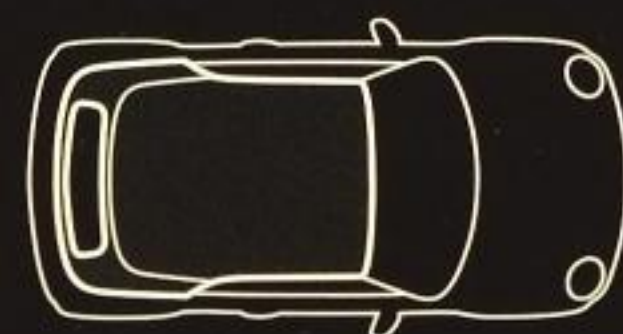


Astro Black ¹

With a MINI Cabrio, there are more possibilities than you ever imagined. And that goes for the choice of paints, upholstery and roof colours too. There is an almost bewildering variety of possible combinations. Particularly striking is the metallic Cool Blue effect colour – depending on how the light strikes it, it can appear almost grey or a dazzling blue. But it's always easy on the eye.

METALLIC COLOURS

Colours are a powerful way of expressing your emotions. And whichever of our metallic paints you choose, your MINI Cabrio will always strike the right tone.



« **SOFT TOP IN BLACK:**
as standard on both the
MINI Cooper Cabrio and the
MINI Cooper S Cabrio.

« **SOFT TOP IN BLUE:**
available as an option on
both the MINI Cooper Cabrio
and the MINI Cooper S Cabrio.

« **SOFT TOP IN GREEN:**
available as an option on
both the MINI Cooper Cabrio
and the MINI Cooper S Cabrio.

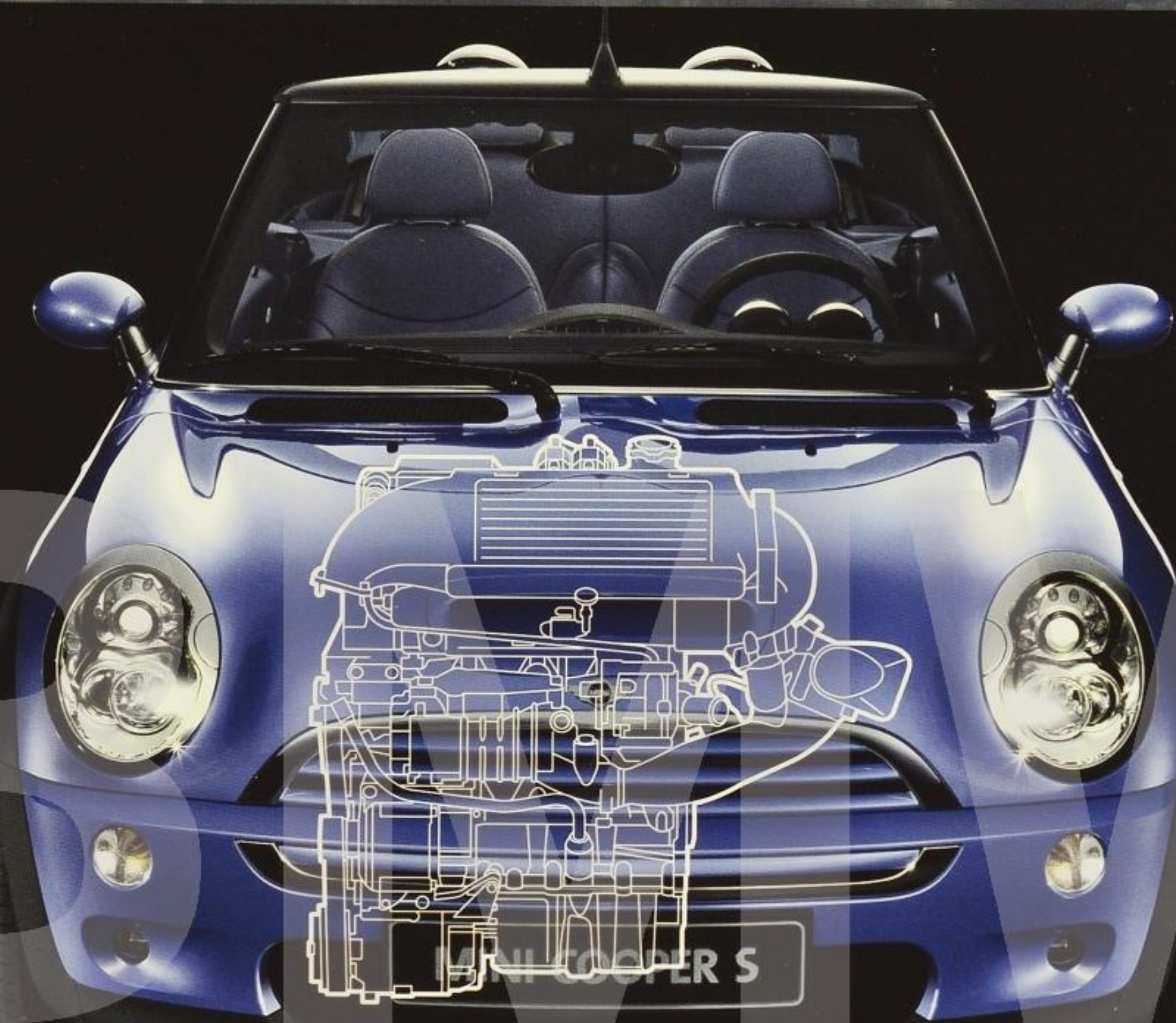
¹ Only available on the
MINI Cooper Cabrio

² Only available on the
MINI Cooper S Cabrio

THE CALM BEFORE THE STORM.

The MINI Cooper S Cabrio throws down the gauntlet to drivers who are looking for a challenge. And of course, it's so much more fun to play outside.





**AN ENGINE THAT
DOESN'T DESERVE TO
BE HIDDEN UNDER A
BONNET.**

SMALL CAUSE, BIG EFFECT:
the MINI range of engines offers something for all
tastes. And high torque even at low revs. The MINI
Cooper S Cabrio boasts a supercharged four-
cylinder engine that develops 125 kW (170 bhp).
Touch the gas pedal, and the only thing acceler-
ating faster than the car will be your heart rate.

RACY: the sport stripes for the bonnet are available in black or white and are optional
on both the MINI Cooper Cabrio and MINI Cooper S Cabrio. >>

6-SPEED MANUAL TRANSMISSION: the MINI Cooper S Cabrio's 6-speed manual transmission is perfectly set up,
and a leather gear shift comes as standard. >>

DUAL EXHAUST PIPE EXTENSION: centrally positioned. As visually distinctive as the engine sound is unique. >>



Climb in. Take your seats.
Drive off. Can you think of
anywhere you'd rather be?



SEATS FOUR IN COMFORT.
FORM AN ORDERLY QUEUE.



LOADED WITH FEATURES.



CHROME LINE INTERIOR:

if you specify the optional Chrome Line Interior, the dials on the instrument panel, central air vents, gear shift, handbrake and front and rear cup holders are all trimmed in chrome. ≡



EASY ENTRY FUNCTION:

fold down the front seat and it automatically slides forward, making it easier to climb in the back. Slide it back again and it clicks back into its previous position.

FOUR-SEATER:

passengers in the rear have plenty of space, and a whole world of headroom.

LOADING:

the tailgate folds down, and the rear section of the soft top swings up, making a wide opening for ease of loading. The rear backrests can fold down separately, increasing the luggage capacity to 605 litres with the roof up.

INTERIOR:

the upholstery and interior strips are available in a wide variety of finishes, complementing the interior colours perfectly, and allowing you to put a personal stamp on your MINI Cabrio.

Sprightly performance.
Agile handling.
Unique design.



THE MINI CABRIO IS READY FOR ANYTHING. WHAT ABOUT YOU?

EQUIPMENT	MINI COOPER CABRIO	MINI COOPER S CABRIO
Air-conditioning/automatic air-conditioning	<input type="checkbox"/>	<input type="checkbox"/>
Airbags: driver and front passenger airbags; head/thorax side airbags	<input type="checkbox"/>	<input type="checkbox"/>
ASC+T	<input type="checkbox"/>	<input type="checkbox"/>
CD changer (6 discs)	<input type="checkbox"/>	<input type="checkbox"/>
Chrome Line Exterior	<input type="checkbox"/>	<input type="checkbox"/>
Chrome Line Interior	<input type="checkbox"/>	<input type="checkbox"/>
Cockpit Chrono Pack	<input type="checkbox"/>	<input type="checkbox"/>
Convertible soft top with sunroof function, fully automatic:		
– black	<input type="checkbox"/>	<input type="checkbox"/>
– blue	<input type="checkbox"/>	<input type="checkbox"/>
– green	<input type="checkbox"/>	<input type="checkbox"/>
Dynamic Stability Control (DSC)	<input type="checkbox"/>	<input type="checkbox"/>
Easy Load function	<input type="checkbox"/>	<input type="checkbox"/>
Glove compartment, lockable	<input type="checkbox"/>	<input type="checkbox"/>
Heated glass rear windscreen	<input type="checkbox"/>	<input type="checkbox"/>
harman/kardon HiFi loudspeaker system	<input type="checkbox"/>	<input type="checkbox"/>
Interior surfaces:		
– high-gloss anthracite	<input type="checkbox"/>	<input type="checkbox"/>
– high-gloss silver	<input type="checkbox"/>	<input type="checkbox"/>
– alloy patina	<input type="checkbox"/>	<input type="checkbox"/>
– wood décor	<input type="checkbox"/>	<input type="checkbox"/>
– body colour	<input type="checkbox"/>	<input type="checkbox"/>
Manual transmission, 5-speed	<input type="checkbox"/>	<input type="checkbox"/>
Manual transmission, 6-speed	<input type="checkbox"/>	<input type="checkbox"/>
Multifunction leather steering wheel	<input type="checkbox"/>	<input type="checkbox"/>
Navigation system with 16:9 monitor inc. DVD	<input type="checkbox"/>	<input type="checkbox"/>
Park Distance Control (PDC) at rear	<input type="checkbox"/>	<input type="checkbox"/>
Radio Boost with cassette, CD or MD player	<input type="checkbox"/>	<input type="checkbox"/>
Radio Wave with cassette player	<input type="checkbox"/>	<input type="checkbox"/>
Central locking, convenient windows and convertible soft top opening operated from remote key	<input type="checkbox"/>	<input type="checkbox"/>
Rev counter with digital speedometer and external temperature gauge	<input type="checkbox"/>	<input type="checkbox"/>
Separately folding rear backrests (lockable)	<input type="checkbox"/>	<input type="checkbox"/>
Sport chassis	<input type="checkbox"/>	<input type="checkbox"/>
Sport seats	<input type="checkbox"/>	<input type="checkbox"/>
Sport steering wheel (3-spoke design)	<input type="checkbox"/>	<input type="checkbox"/>
Sport stripes on bonnet, white or black	<input type="checkbox"/>	<input type="checkbox"/>
Wind deflector	<input type="checkbox"/>	<input type="checkbox"/>
Xenon lights	<input type="checkbox"/>	<input type="checkbox"/>

☐ as standard ☐ optional extra

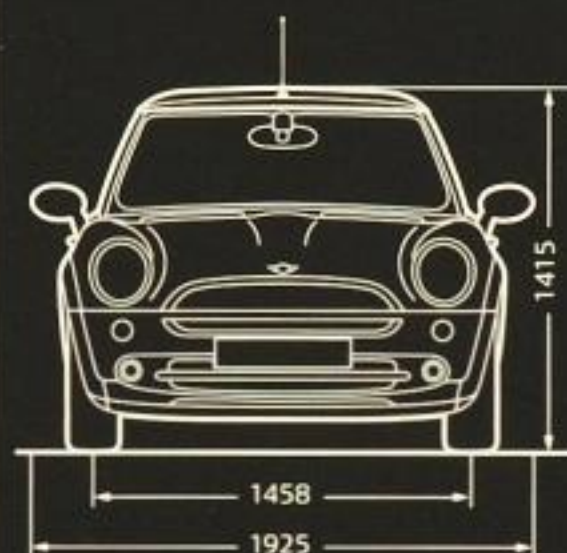
TECHNICAL DATA		MINI COOPER CABRIO	MINI COOPER S CABRIO
Unladen weight (EU) ¹	kg	1250	1315
Max. output/max. revs	kW/bhp/rpm	85/115/6000	125/170/6000
Max. torque/revs	Nm/rpm	150/4500	220/4000
Acceleration 0 - 100 km/h	sec	9.8	7.4
Top speed	km/h	193	215
Fuel consumption (urban)	l/100 km	10.1	11.8
Fuel consumption (extra-urban)	l/100 km	5.7	7.1
Fuel consumption (combined EU cycle)	l/100 km	7.3	8.8
Tank capacity (approx.)	l	50	50

¹The figure quoted includes a 90 % tank filling, 68 kg for the driver and 7 kg for luggage. Unladen weight applies to vehicles with standard equipment. Optional equipment may increase this figure.

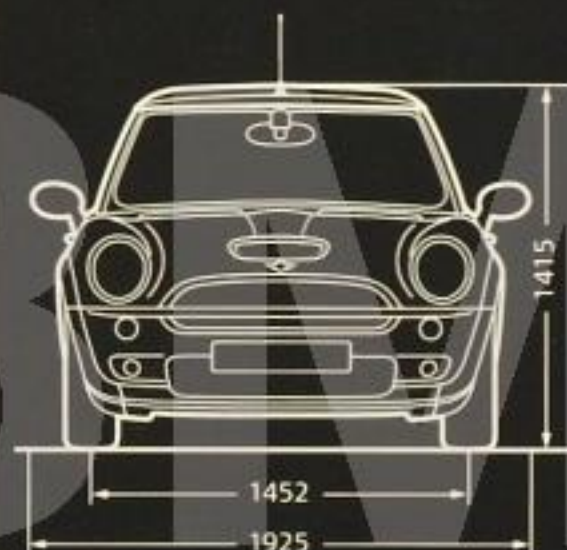
RECYCLING.

At every stage, from design to disassembly, recycling is central to the MINI philosophy. For example, all the materials used in its manufacture were selected because they can be used in a sustainable and environmentally friendly way. And every MINI is built to be easily and economically recycled when its driving days are finally done. We have been working on this approach since 1994 at the BMW Group Recycling and Disassembly Centre in Munich, the only facility of its kind. Your MINI dealer will also be pleased to advise you on the disposal of your old vehicle.

MINI COOPER CABRIO.



MINI COOPER S CABRIO.



All figures in mm.

The models illustrated in this brochure show the specifications for various markets. In part, they include optional equipment and accessories not fitted as standard. According to the specific requirements of other markets, alterations in models, standard and optional equipment, as described in the text and illustrations, may occur. For precise information, please contact your MINI dealer. Subject to change in design and equipment. Subject to error.

The people, quotes and events described in this catalogue are entirely fictitious and any resemblance to actual persons, living or dead, is purely coincidental.

© BMW AG, Munich/Germany. Not to be reproduced, wholly or in part, without written permission of BMW AG, Munich.

For more information, visit www.MINI.com